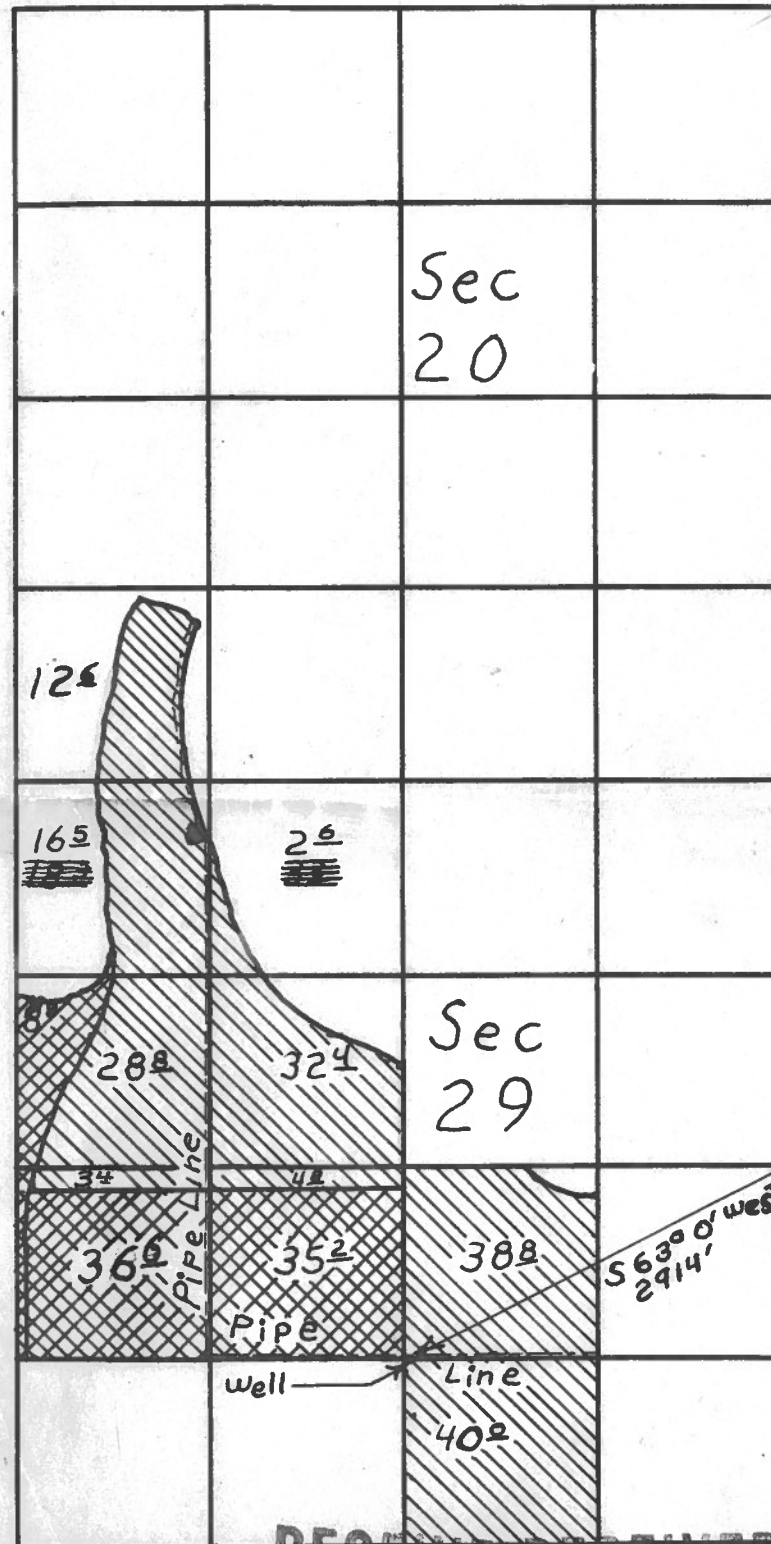


T25S R29E W.M.



Supplimental Irrigation

Primary Irrigation

† Corner, Marked By Rock Cairn and Steel Post with metal tag

Application No. G 6186
Permit No. G 5199

RECEIVED RECEIVED
NOV 5 1973 AUG 23 1973
STATE ENGINEER STATE ENGINEER
SALEM, OREGON SALEM, OREGON

TREASURE VALLEY COMMUNITY COLLEGE		
SCALE 4" = 1 mi	DRAWN BY J.L.H.	
APPROVED BY		
TITLE		
DATE 8-18-73	DRAWING NUMBER	SHEET