

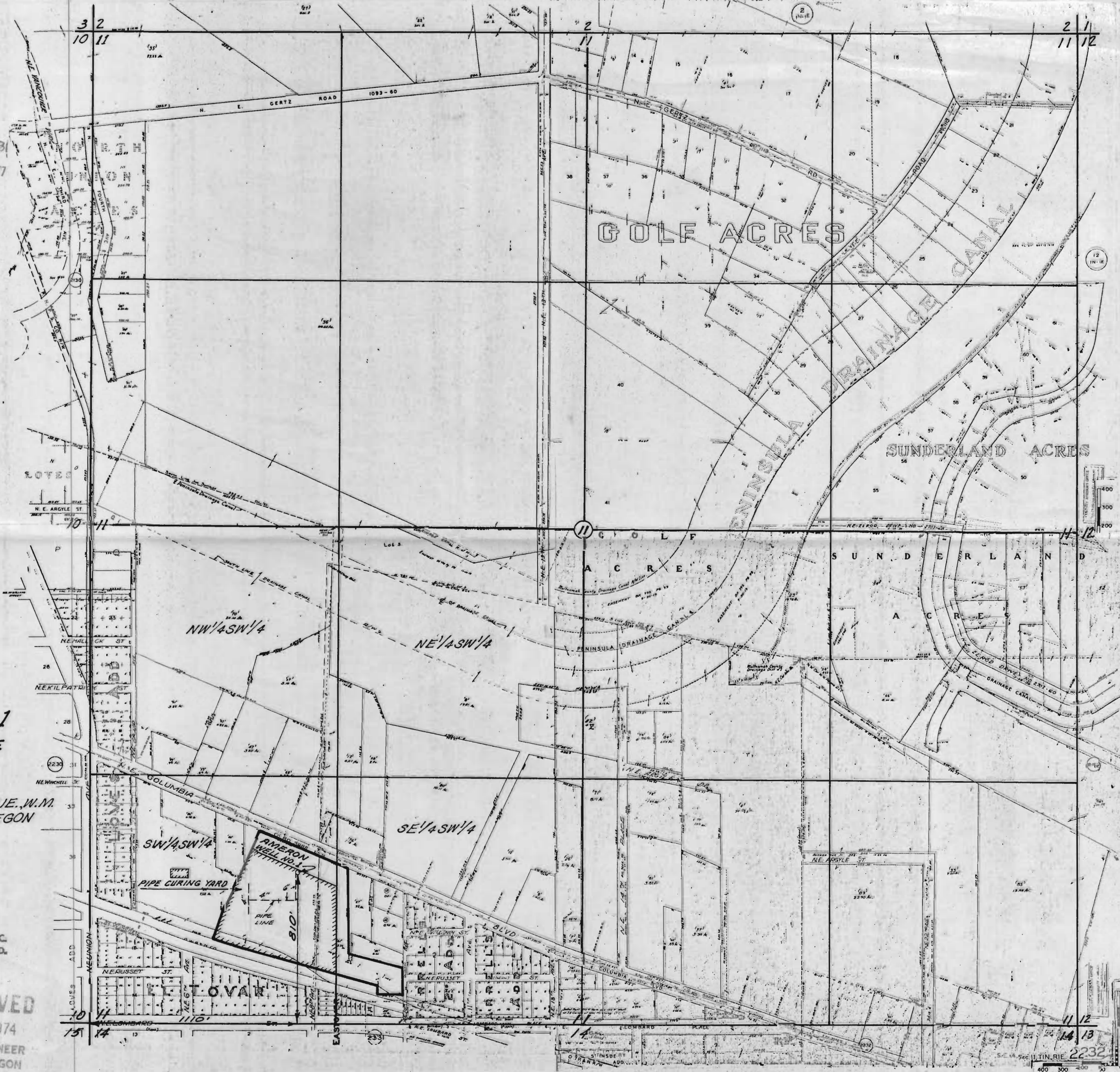
Application No. G637  
Permit No. G637

MAP SHOWING  
**AMERON Well No. 1**  
LOCATION AND PIPE  
CURING YARD  
IN THE  
SW<sup>1</sup>/<sub>4</sub>SW<sup>1</sup>/<sub>4</sub> SEC. 11, T. 1 N., R. 1 E., W. 1 M.  
MULTNOMAH CO. OREGON

SCALE: 1" = 400'

PETTJOHN ENGINEERING CO., INC.  
282-0901 4145 N. E. CULLY BLVD.  
PORTLAND, OREGON 97218  
74-76

RECEIVED  
JUL 15 1974  
STATE ENGINEER  
SALEM, OREGON



11 12  
14 13  
SEC. 11, T. 1 N., R. 1 E., W. 1 M.  
2232  
400 300 200 100