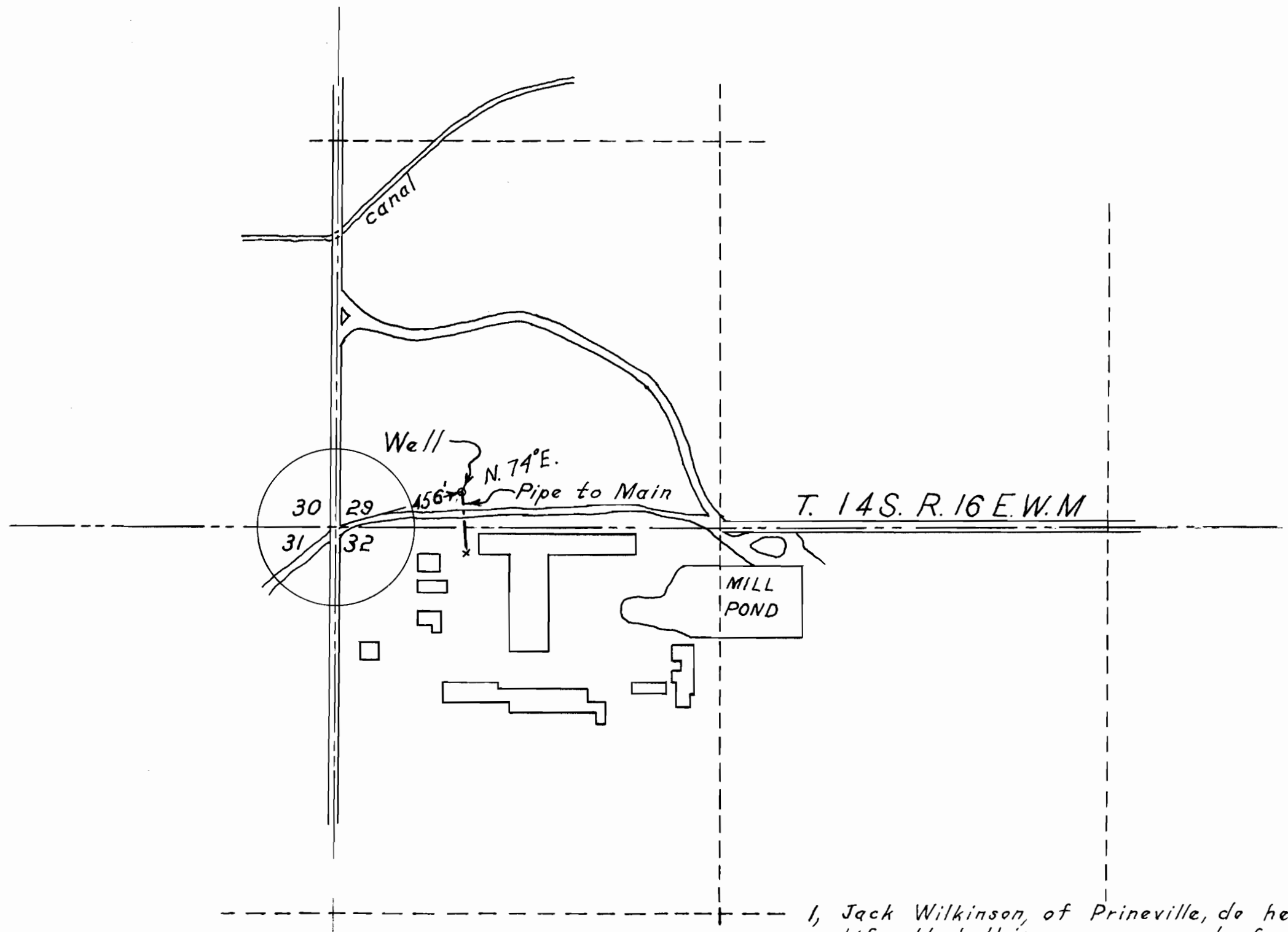


ALEXANDER-STEWART LBR. CO. PRINEVILLE, OREGON.



I, Jack Wilkinson, of Prineville, do hereby certify that this map was made from notes taken during an actual survey made by me on Sept 20, 1955; that the monument shown on this map consisting of a 12 inch casing is 456 feet N. 74° E from section corner to sections 29, 30, 31, & 32, of T. 14 S. R. 16 E. W. M. *Jack Wilkinson*

Scale 1" = 400'

APPROVED NO G-148