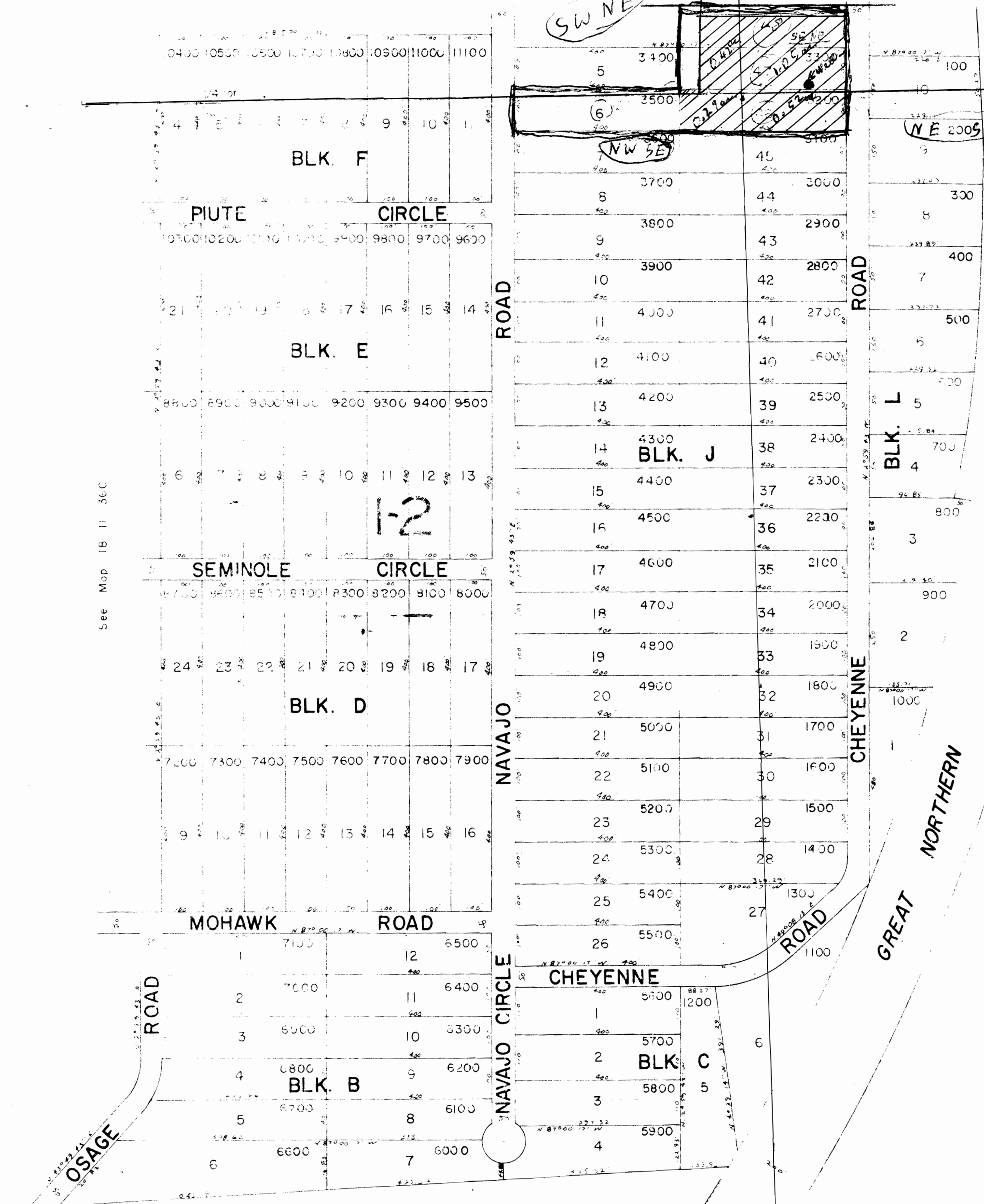


SE 1/4 SEC. 36 T. 18 S. R. 11 E. W. M.  
 DESCHUTES COUNTY

18 11 36D

**RECEIVED**  
 NOV 24 1971  
 STATE ENGINEER  
 SALEM, OREGON

See Map 19 11 36A



RAILROAD

THE WELL IS LOCATED 10 ft. N. and 115 ft. W. from the E 1/4 corner of SEC. 36 T. 18 S. R. 11 E.

**RECEIVED**  
 DEC 28 1971  
 STATE ENGINEER  
 SALEM, OREGON

**RECEIVED**  
 FEB 28 1972  
 STATE ENGINEER  
 SALEM, OREGON

Application No. G-5673  
 Permit No. G-5494

18 11 36D

36 | 31  
 1 | 6