

Twp 1 S. Rng. 3 W WM.

34 35

3 2

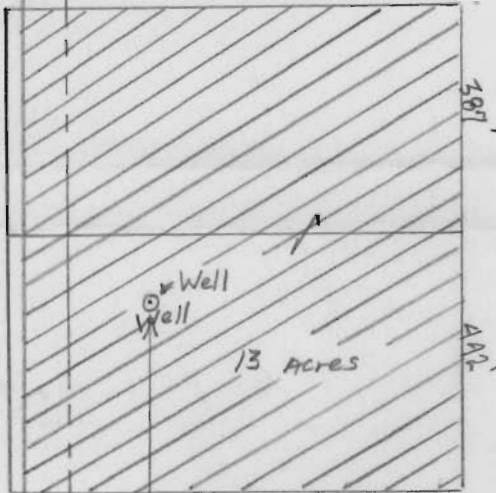
Tualatin Valley Hwy



Rd.

N. W 1/4 Section 2

Sec. 3
SE 1/4 NE 1/4
1.3 acres



SW 1/4 of NW 1/4

700'

440'

Cook

Application No. G-647
Permit No. G-563

Scale 1 in. = 330 ft.

RECEIVED
MAY 10 1957
STATE ENGINEER
SALEM, OREGON