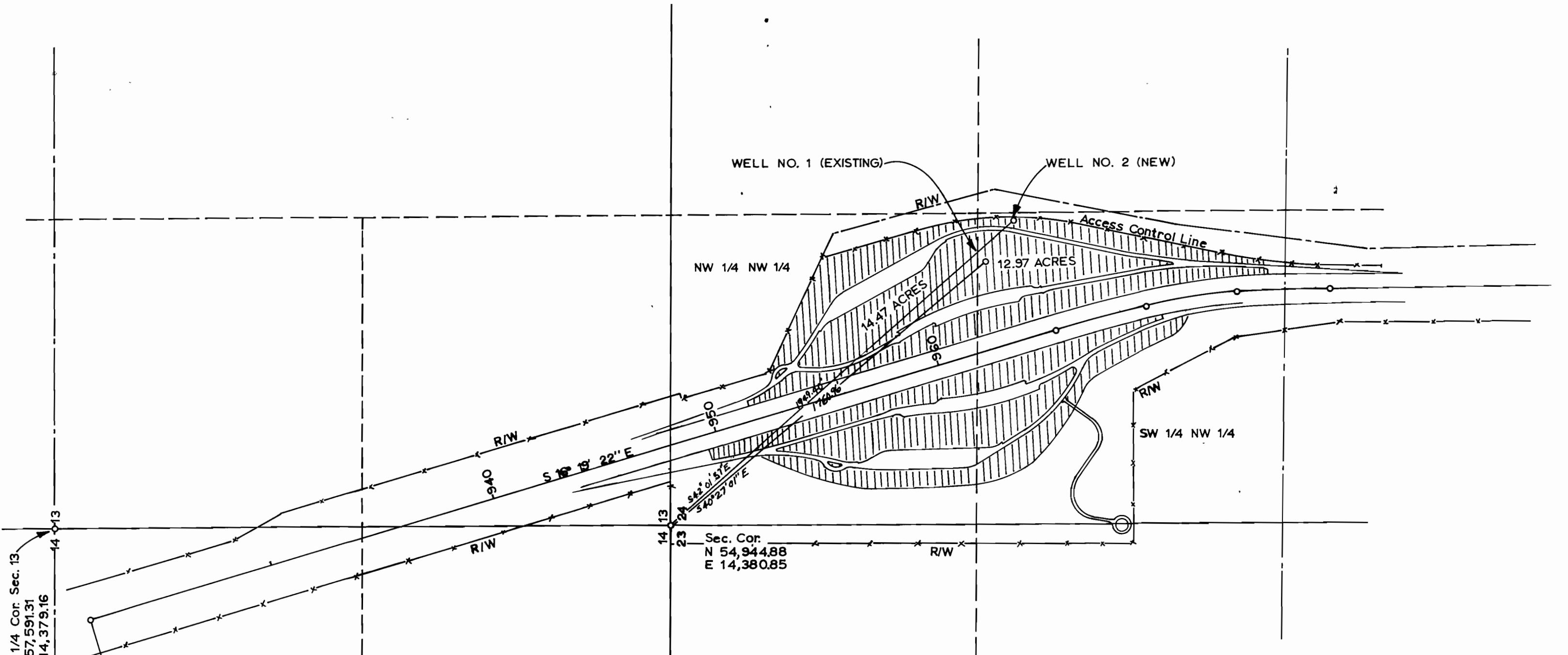


T.35 S., R. 6 W., W.M.



W 1/4 Cor. Sec. 13
N 57,591.31
E 14,379.16

919+1991 PT. BK. E
921+9857 POT. AN.
N 57,439.63
E 13,988.14

Sec. Cor.
N 54,944.88
E 14,380.85

Application No. G-5943
Permit No. E-5642

OREGON STATE HIGHWAY DIVISION
LANDSCAPE UNIT

WATER RIGHT APPLICATION
For
MANZANITA SAFETY REST AREA
PACIFIC HIGHWAY
JOSEPHINE COUNTY
SCALE 1"= 400'