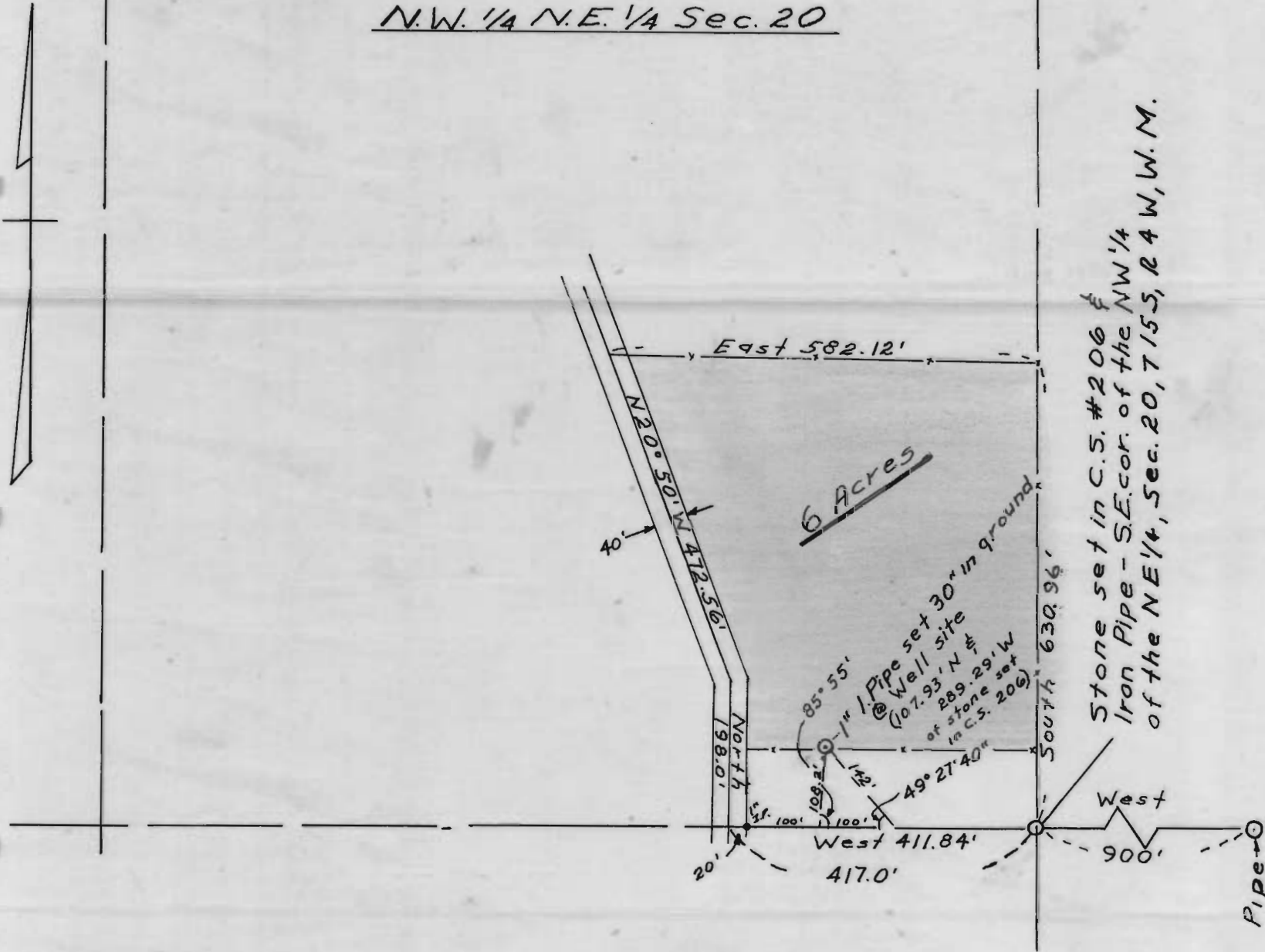


N.W. 1/4 N.E. 1/4 Sec. 20



Stone set in C.S. #206 f
Iron Pipe - S.E. cor. of the NW 1/4
of the NE 1/4, Sec. 20, T15S, R4W, W.M.

SITE OF PROPOSED WELL IN THE NW 1/4 NE 1/4 of S
SECTION 20, T15S, R4W, W.M.,
LANE COUNTY, ORE.

RECEIVED
MAY 28 1957
STATE ENGINEER
SALEM, OREGON

Scale ~1" = 200'

Application No. G-670
Permit No. G-575