

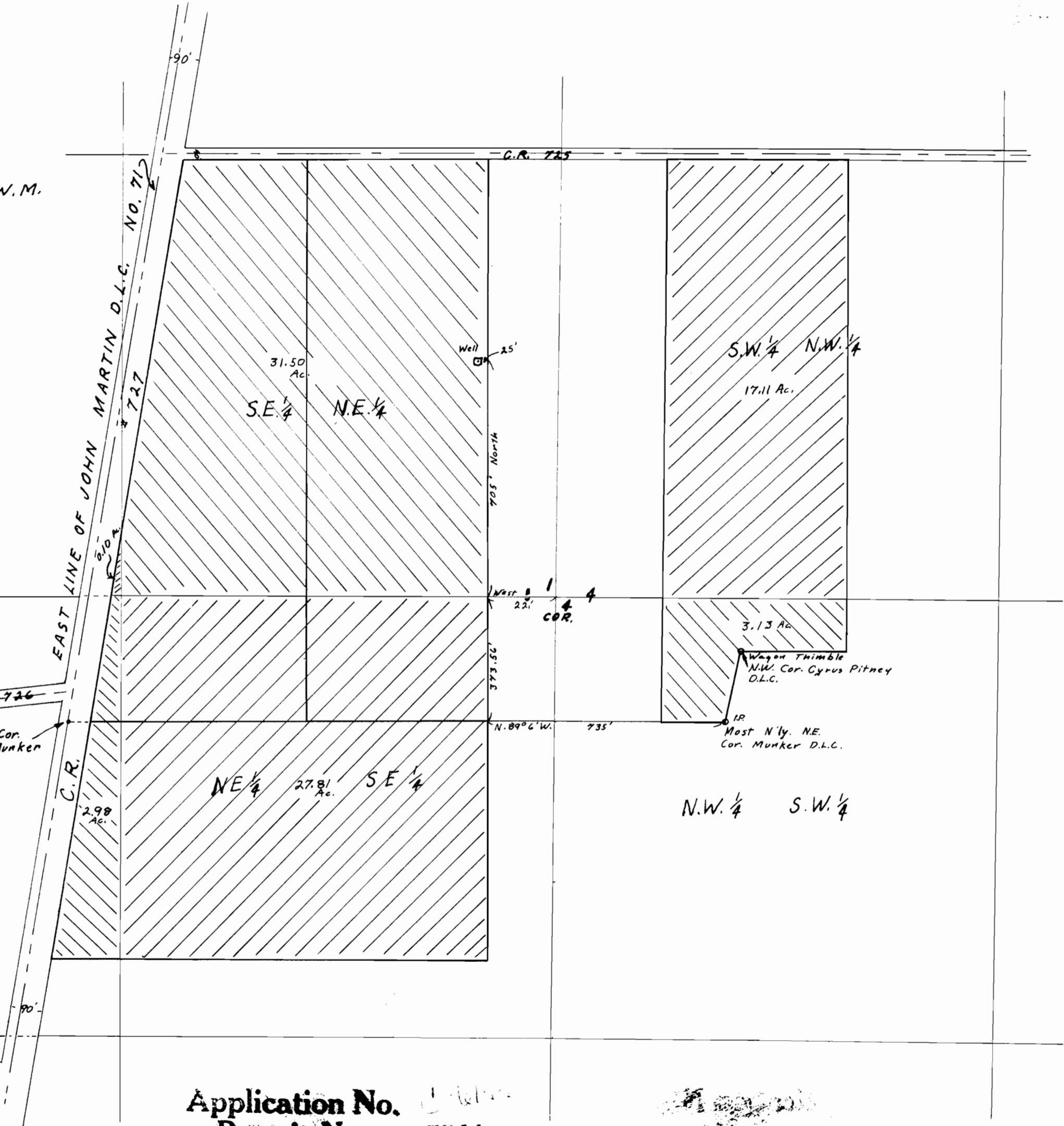
RECEIVED
 JUN 1973
 STATE ENGINEER
 SALEM, OREGON

Irrigation Map
 for
J. L. M^cDONALD
 Sec. 4+5 T. 7 S R. 2 W.W.M.
 MARION Co. ORE.

Scale 1"=300'

S.W. 1/4 NE 1/4

NW 1/4 SE 1/4



Application No. *1011*
 Permit No. G 5841