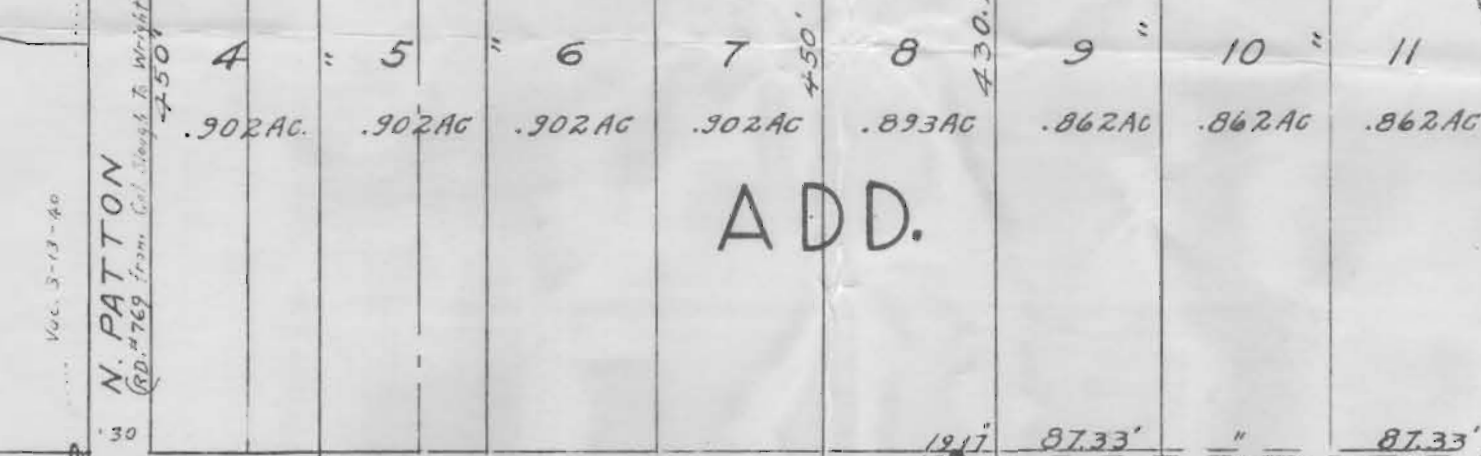
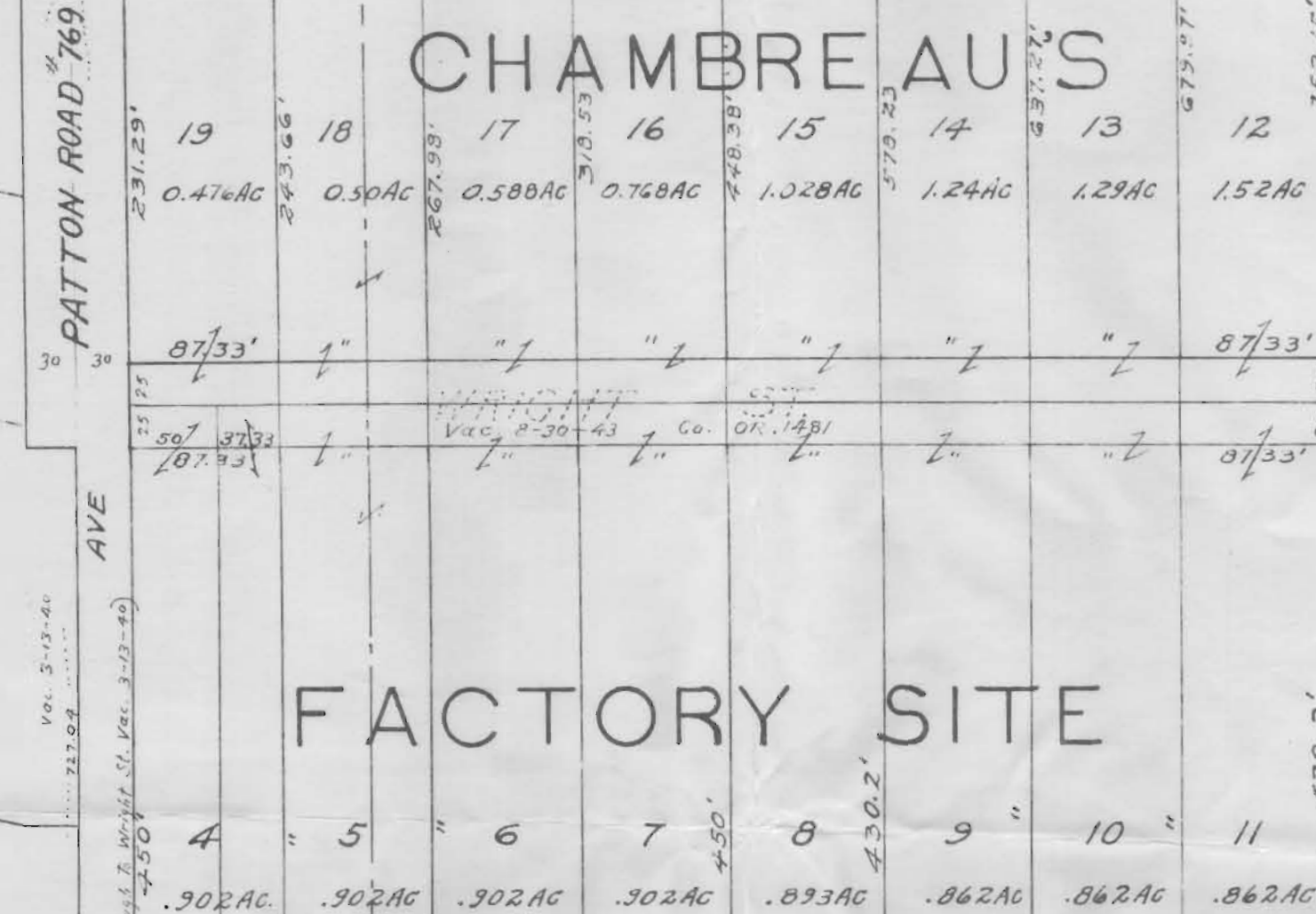


CHAMBRE AUS

FACTORY SITE

ADD.

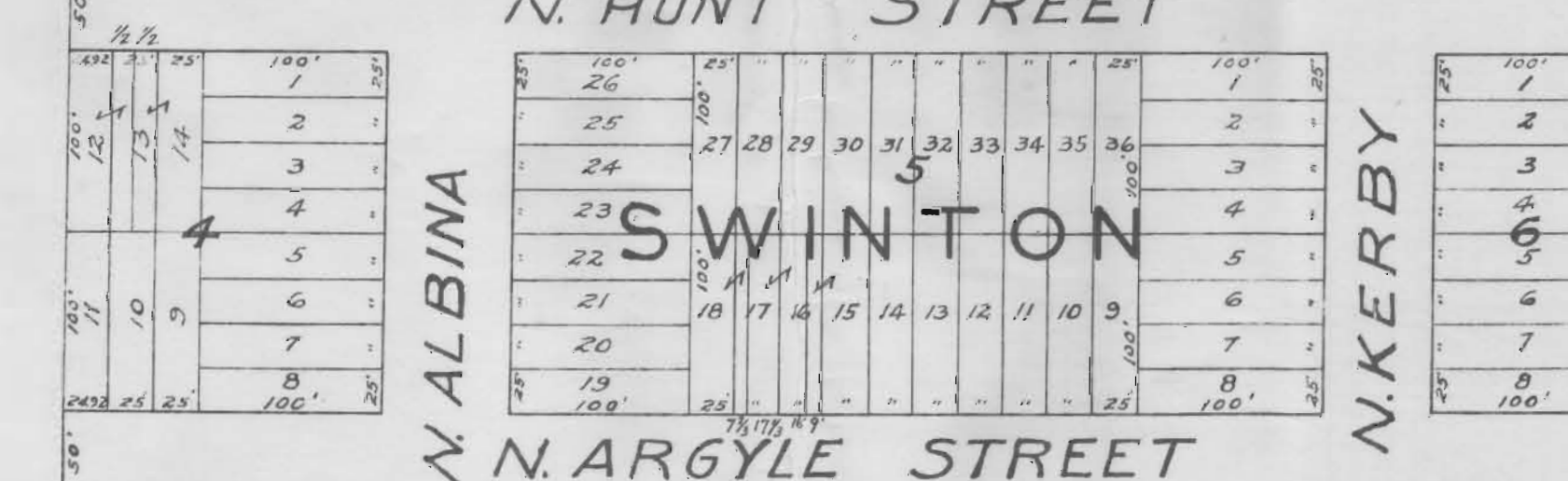


Visited 8-1-44 In. N. of Columbia Bl. & Slough  
 E. 20' previously shown at that point

Columbia Cemetery

SW 1/4 NW 1/4 Sec 10

SE 1/4 NW 1/4 Sec 10



Application No. G-165  
 Permit No. 4-59

2129  
 N.W. 10-IN. I.E.