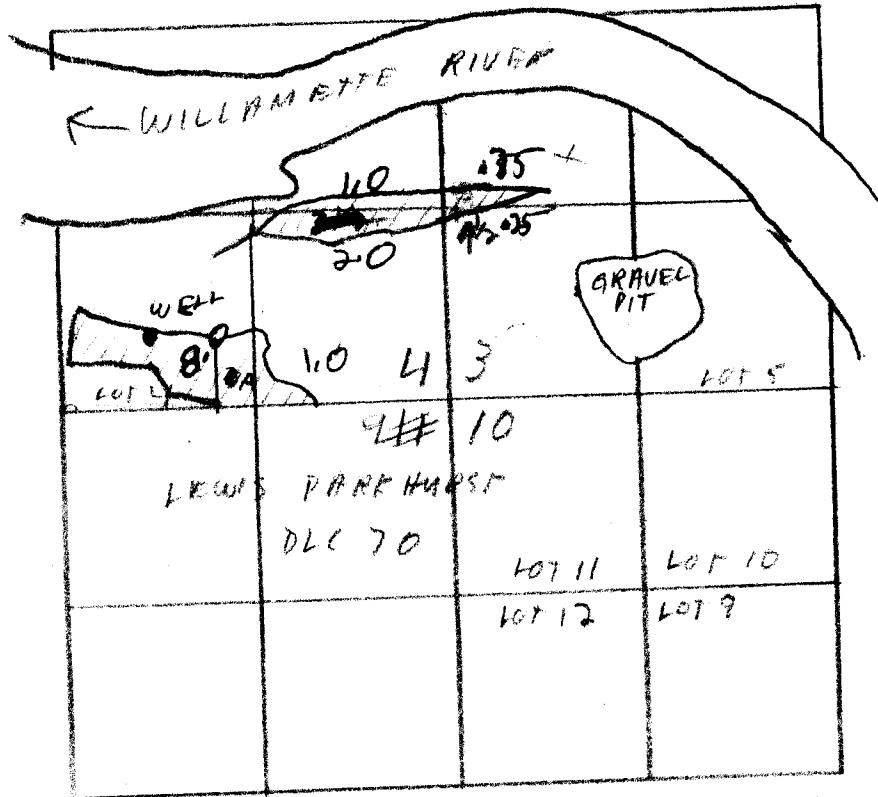


T.7S R.3 W.W.4

REGISTERED  
STATE ENGINEER  
SALEM, OREGON



GRAVEL PIT DIVERSION  
680' N + 80' E FROM THE S.E. CORNER  
OF CORNER SW<sup>1</sup>/<sub>4</sub> SW<sup>1</sup>/<sub>4</sub> SEC 3 T7S R4W

WELL LOCATED 563' N + 580' E FROM S<sup>1</sup>/<sub>4</sub>  
CORNER SECTION 4 BEING WITHIN S<sup>1</sup>/<sub>4</sub> S<sup>1</sup>/<sub>4</sub>  
SEC 4 TWP 7S RGE 3W

SCALE 4" EQUAL 1 MILE.

Application No. G 6481

Permit No. G 6103