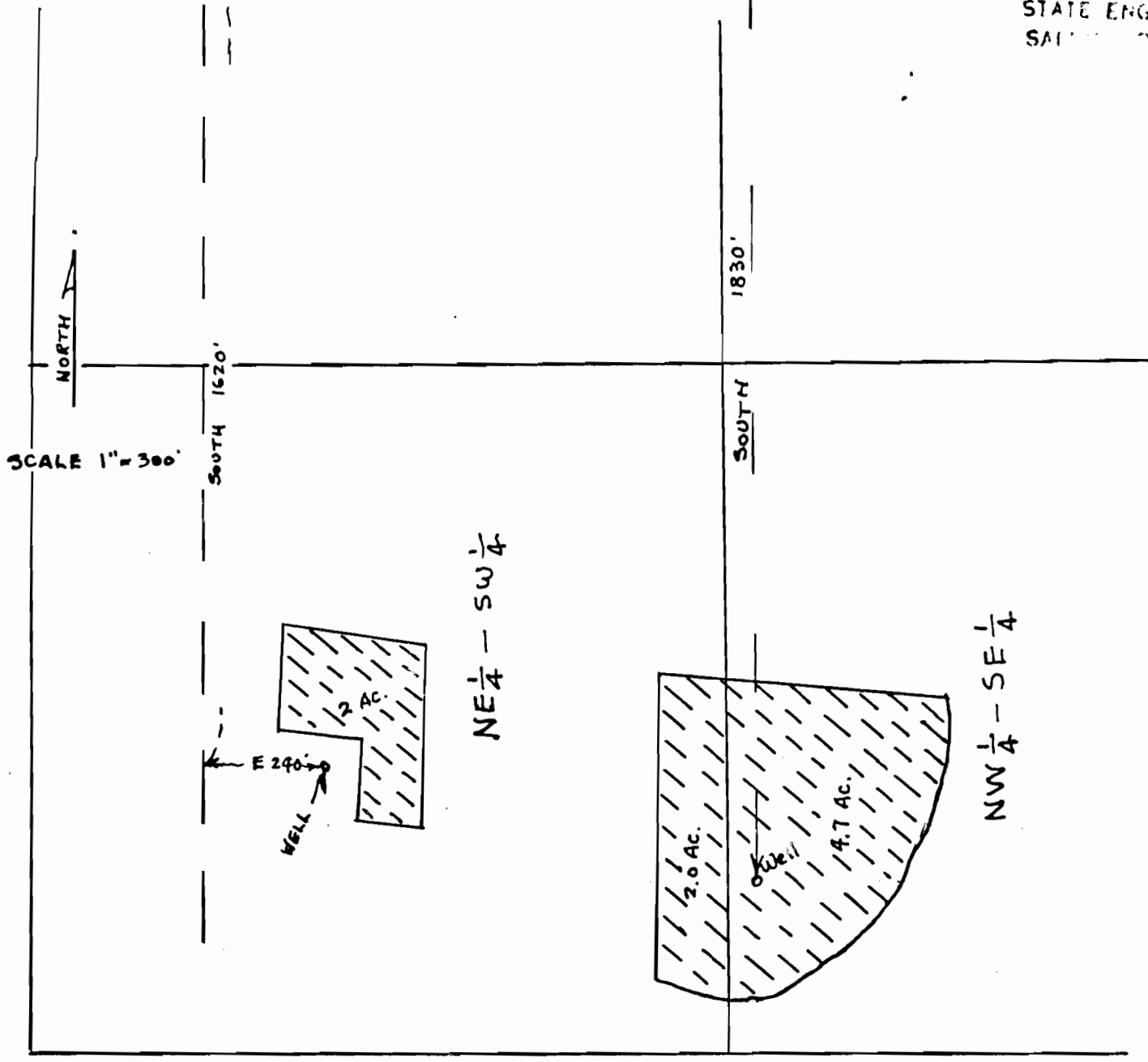


N.W. cor. Darlin Smith D.L.G

EAST 1050'

RECEIVED
MAY 15 1975
STATE ENGINEER
SALMON REGION



WATER APPLICATION MAP
CLAUD E. ENGEL
3/31/75
SEC. 24, T4S, R4W, W.M.

Application No. G-6206 & G-6807
Permit No. G 6311 & G-6312