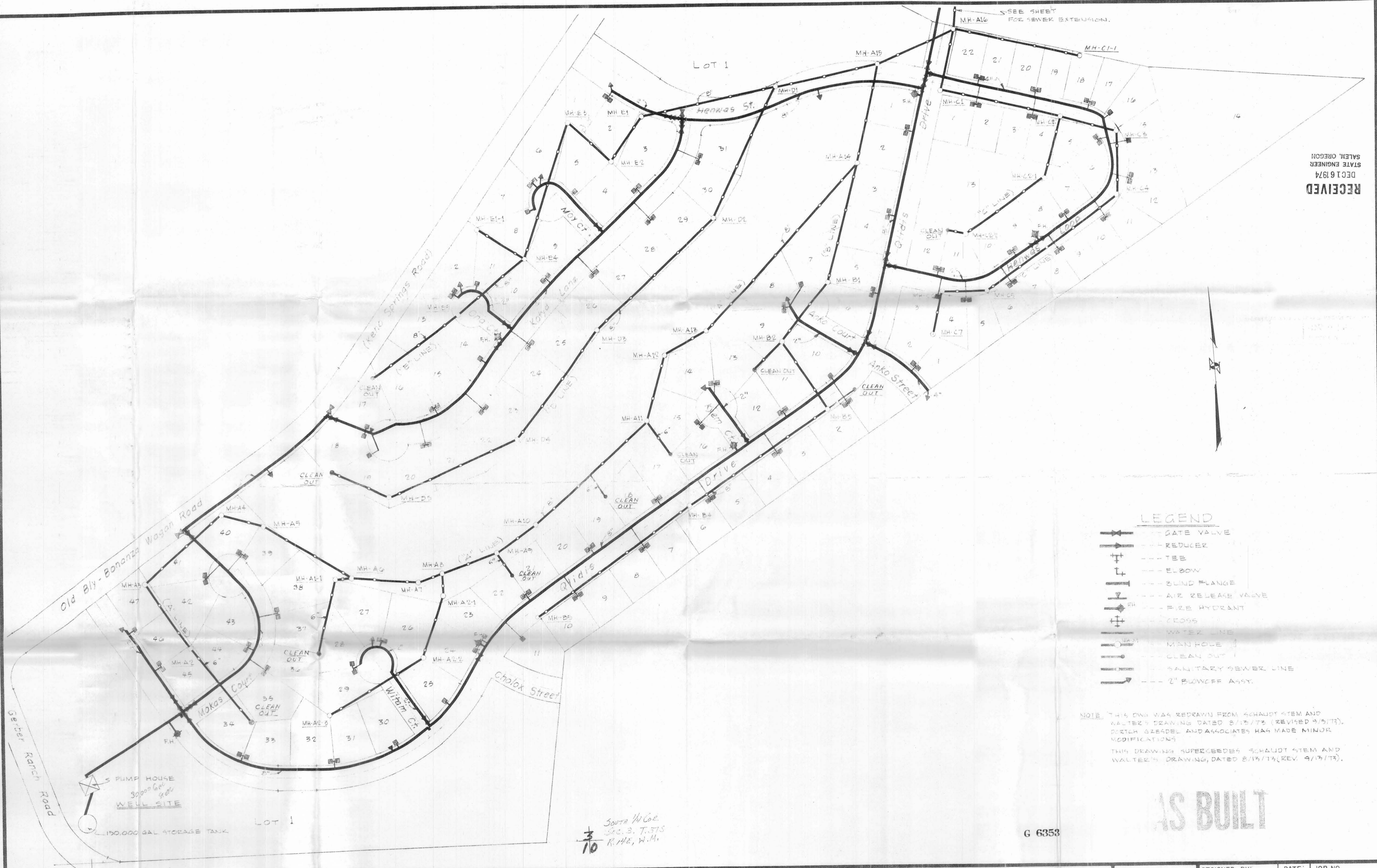


RECEIVED
 DEC 16 1974
 STATE ENGINEER
 SALEM, OREGON



LEGEND

- GATE VALVE
- REDUCER
- TEE
- ELBOW
- BLIND FLANGE
- AIR RELEASE VALVE
- FIRE HYDRANT
- CROSS
- WATER LINE
- MANHOLE
- CLEAN OUT
- SANITARY SEWER LINE
- 2" BLOWOFF APP.

NOTE: THIS DWG WAS REDRAWN FROM SCHAUDT'S DWG AND WALTER'S DRAWING DATED 8/13/73 (REVISED 9/13/73). DORTCH GRESDER AND ASSOCIATES HAS MADE MINOR MODIFICATIONS. THIS DRAWING SUPERCEDES SCHAUDT'S DWG AND WALTER'S DRAWING, DATED 8/13/73 (REV. 9/13/73).

AS BUILT

G 6353

3/10
 SOUTH 1/4 CO.
 SEC. 3, T. 37S
 R. 11E, W. 11E

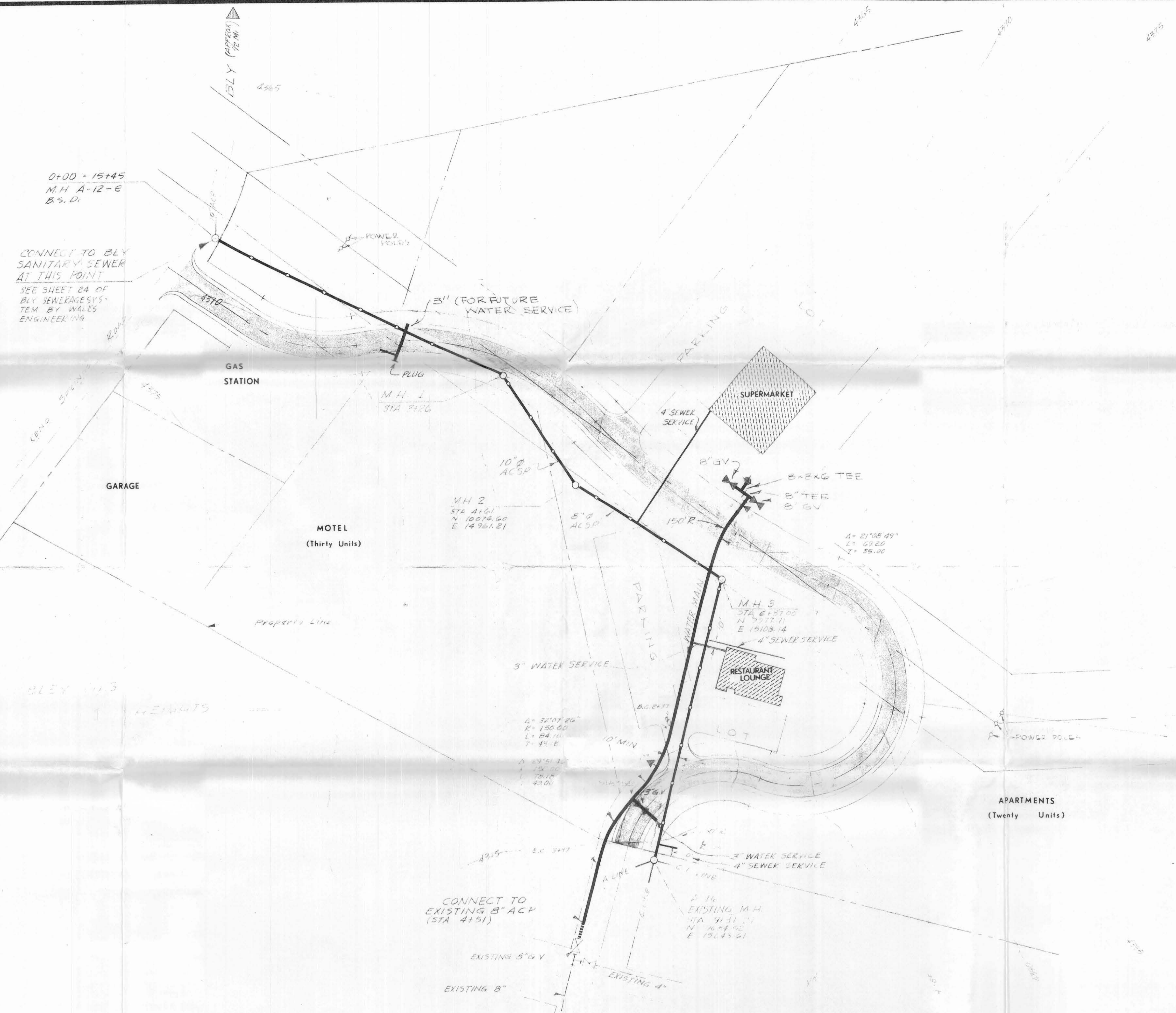
REVISION	DATE	REV. NO.

DORTCH GRESDER and ASSOCIATES
 SURVEYING & ENGINEERING
 1905 OREGON AVENUE
 KLAMATH FALLS, OREGON 97601
 503-882-5445

**BLEY-WAS HEIGHTS
 WATER - SEWER PLAN**



DESIGNED BY: SCHAUDT, STEWART AND WALTER'S	DATE: 8/73	JOB NO. 4-756
DRAWN BY: W.F.S.	DATE: 6/74	SERIAL NO.
SCALE: 1" = 100'		SHEET NO. DG-13



0+00 = 15+45
M.H. A-12-E
B.S.D.

CONNECT TO BLY
SANITARY SEWER
AT THIS POINT
SEE SHEET 24 OF
BLY SEWERAGE SYS-
TEM BY WALES
ENGINEERING

CONNECT TO
EXISTING 8" ACP
(STA 4+51)

M.H. 2
STA 4+61
N 10074.60
E 14961.21

M.H. 3
STA 6+37.00
N 7577.11
E 15103.14

4.16
EXISTING M.H.
STA 9+31.71
N 7664.95
E 15041.21

RECEIVED
DEC 16 1974
STATE ENGINEER
SALEM, OREGON

DORTCH SURVEYING & ENGINEERING
GRESDEL and ASSOCIATES
1905 OREGON AVENUE
KLAMATH FALLS, OREGON 97601
503-882-5445

SMITH COMMERCIAL DEVELOPMENT
WATER & SEWER PLAN



DESIGNED BY: JRC & DBH	DATE: 4/74	JOB NO. 403
DRAWN BY: JRC	DATE: 4/74	SERIAL NO.
SCALE: 1" = 50'		SHEET NO. 2 OF 15

G 6353

G 673

ELEV. DATUM: U.S. - F.T.M.
CURVATURE CORRECTED BY
TRIGONOMETRIC METHOD

REV. BY	REVISION	DATE	REV. NO.