

N.W. COR. of S.W. 1/4 of S.E. 1/4 SEC. 36

N.E. COR. of S.W. 1/4 of S.E. 1/4 SEC. 36

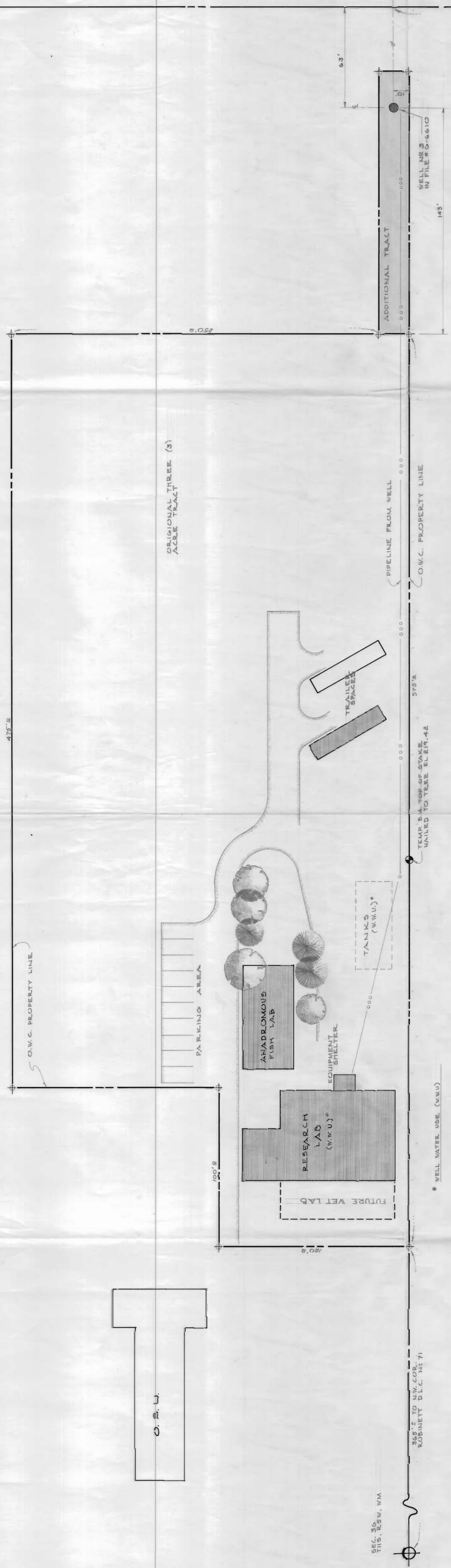
RECEIVED
OCT 19 1974
STATE ENGINEER
SALEM, OREGON

N.E. COR. of S.W. 1/4 of S.E. 1/4 SEC. 36

Application No. G-6610
Permit No. G 6377

OREGON STATE GAME COMMISSION
PORTLAND, OREGON
RESEARCH COMPLEX
AND WELL SITE
CORVALLIS

| | | |
|---------------------------|-------------------------|-------------------------|
| DESIGNED BY D. JACKSON | DATE | REVISION BY |
| DRAWN BY J.S.F. | APPROVED BY DIRECTOR | |
| CHECKED | SHEET 1 OF 1 | DRAWING NO. 1-81-902 |
| SCALE 1" = 30' | SHEETS | |



365'± TO NW COR. ROBINETT D.L.C. N1/2 71

SEC. 36 T1S, 25W, W4