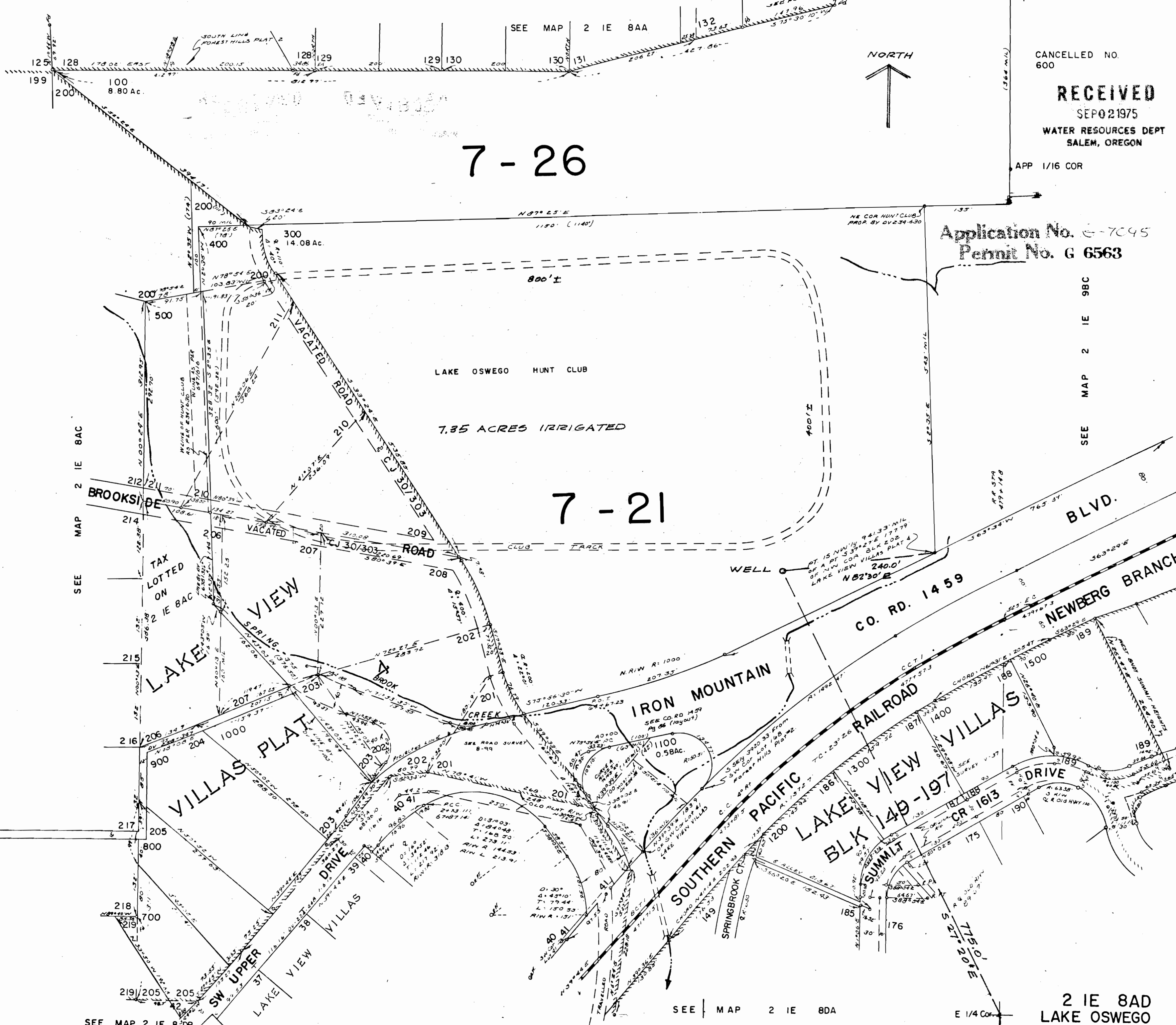


SE 1/4 NE 1/4 SEC. 8 T.2S R.1E. W.M.  
CLACKAMAS COUNTY

1" = 100'

2 IE 8AD  
LAKE OSWEGO



7-26

7-21

Application No. G-7045  
Permit No. G 6563

CANCELLED NO.  
600

RECEIVED

SEP 02 1975

WATER RESOURCES DEPT  
SALEM, OREGON

APP 1/16 COR

SEE MAP 2 IE 8AC  
SEE MAP 2 IE 8DA  
SEE MAP 2 IE 8DB

SEE MAP 2 IE 8AC

SEE MAP 2 IE 8DB

SEE MAP 2 IE 8DA

E 1/4 Cor

2 IE 8AD  
LAKE OSWEGO