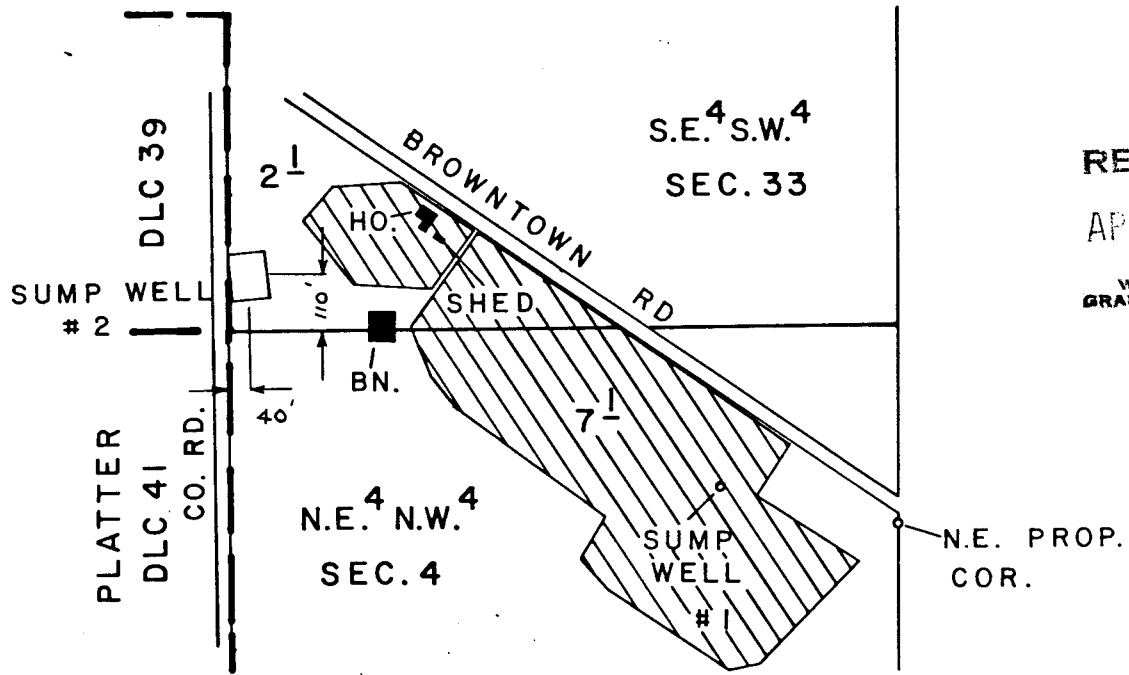


T.39 & 40 S., R.7 W., W.M.



RECEIVED
 APR 1 1980
 WM. DIST. 14
 GRANTS PASS. ORE.

SUMP WELL # 1 LOC. - 330 FT. S. & 990 FT. E. FROM
 N.W. COR., N.E. N.W., SEC. 4.

SCALE : 1" = 400 FT.



UNDER

Application No. G-7151 Permit No. G-6598
 IN NAME OF

GEORGE W. SICKLER

Surveyed JUN. 12 1979, by B. SUND

D.H.M.
 P.T.S. - 1979 - 14 - B