

PROPOSED DOMESTIC WATER SYSTEM  
FOR  
**TOLLGATE**  
PHASE NO. 1 (1972)  
A SUBDIVISION  
IN SEC. 31, T. 14 S., R. 10 E., W. M.  
DESCHUTES COUNTY, OREGON

ENGINEERING

DEC 14, 1972  
157  
453

ALL RIGHTS RESERVED  
NO PART OF THIS DOCUMENT IS TO BE REPRODUCED OR TRANSMITTED IN ANY FORM OR BY ANY MEANS, ELECTRONIC OR MECHANICAL, INCLUDING PHOTOCOPYING, RECORDING, OR BY ANY INFORMATION STORAGE AND RETRIEVAL SYSTEM, WITHOUT PERMISSION IN WRITING FROM THE ENGINEER.

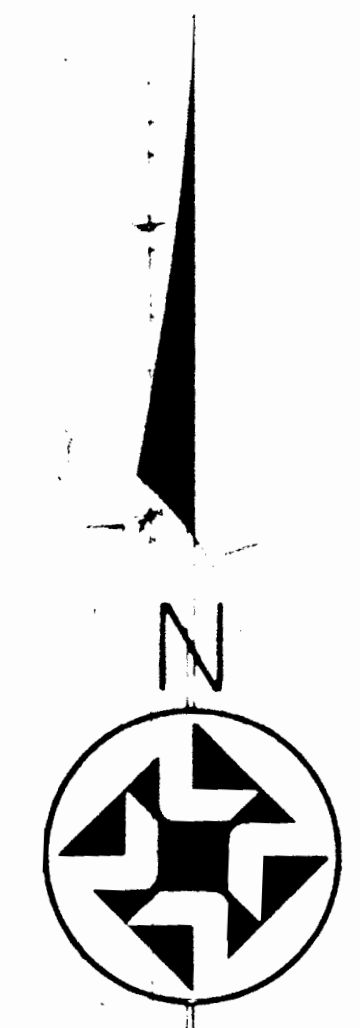
DATE OF PREPARATION  
DATE OF REVISION

BY  
CHECKED BY

FOR  
Forest lands  
EXEMPTIONS

ALL RIGHTS RESERVED  
NO PART OF THIS DOCUMENT IS TO BE REPRODUCED OR TRANSMITTED IN ANY FORM OR BY ANY MEANS, ELECTRONIC OR MECHANICAL, INCLUDING PHOTOCOPYING, RECORDING, OR BY ANY INFORMATION STORAGE AND RETRIEVAL SYSTEM, WITHOUT PERMISSION IN WRITING FROM THE ENGINEER.

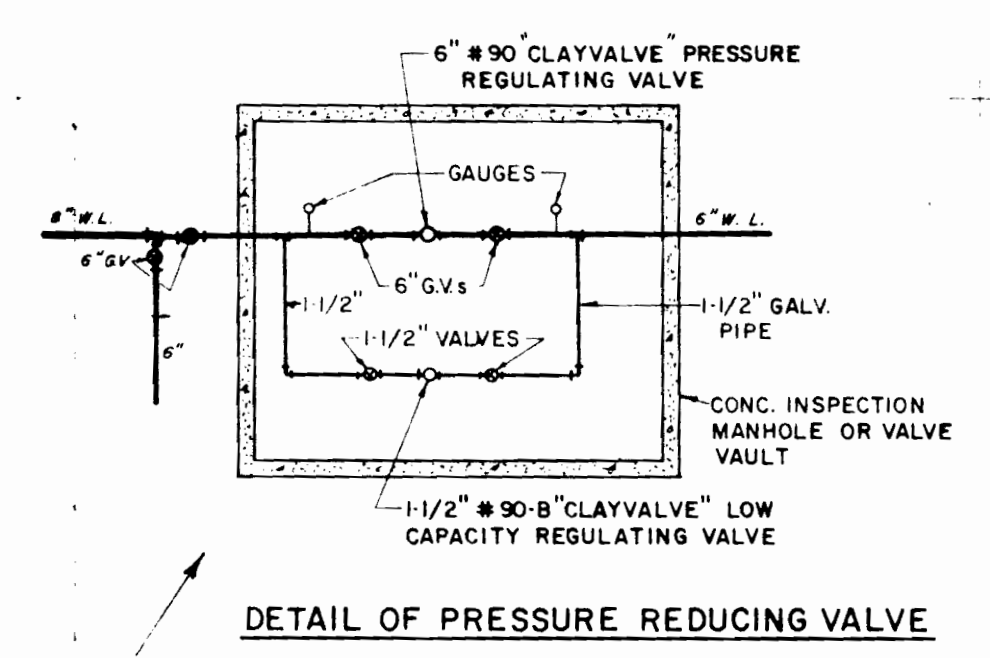
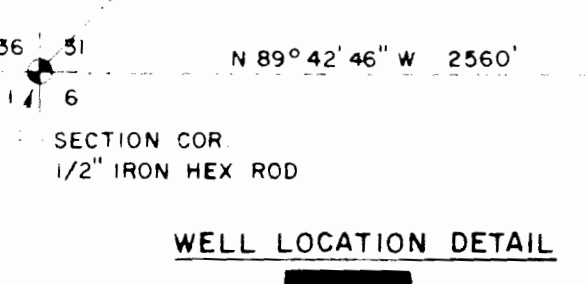
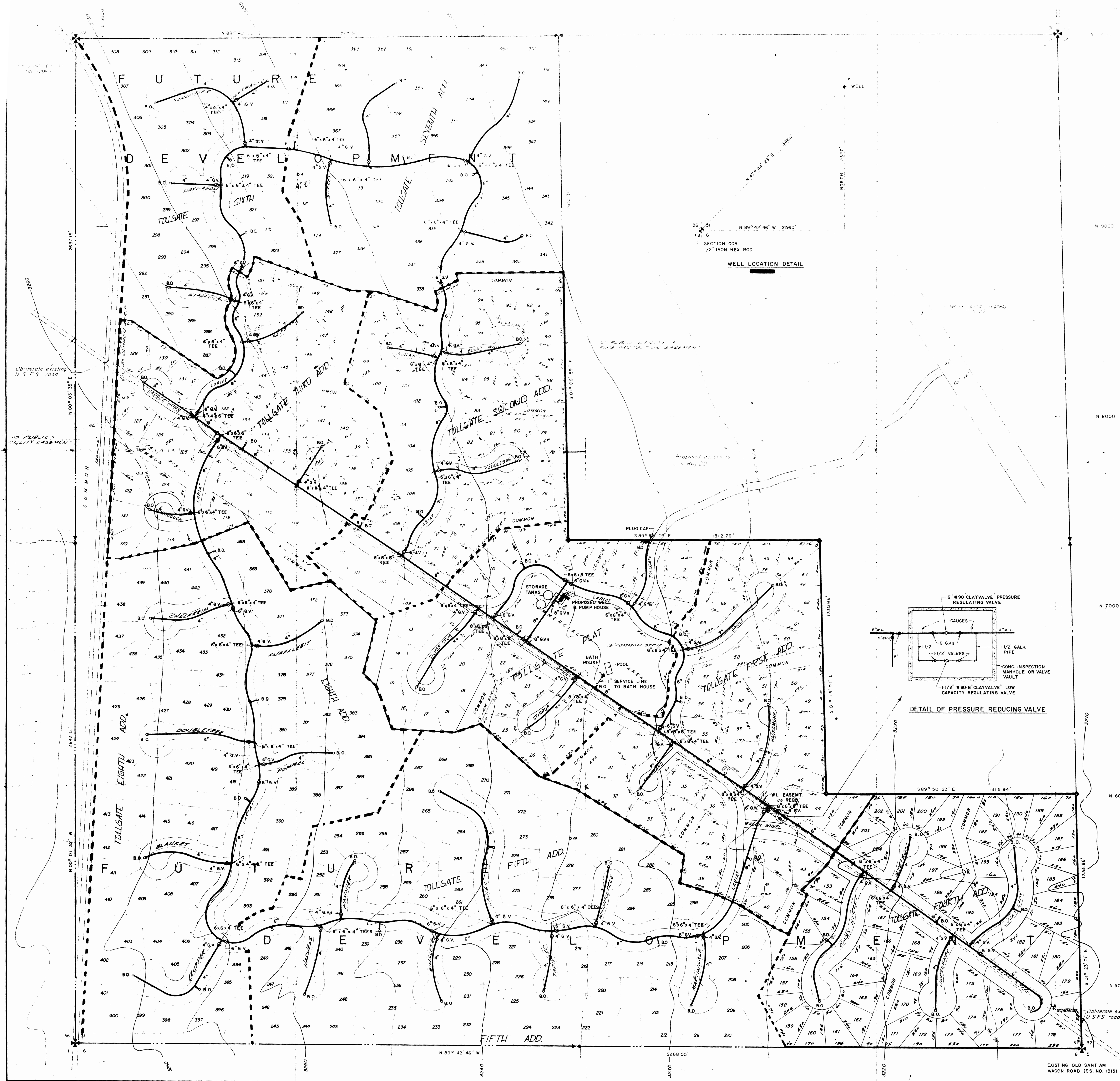
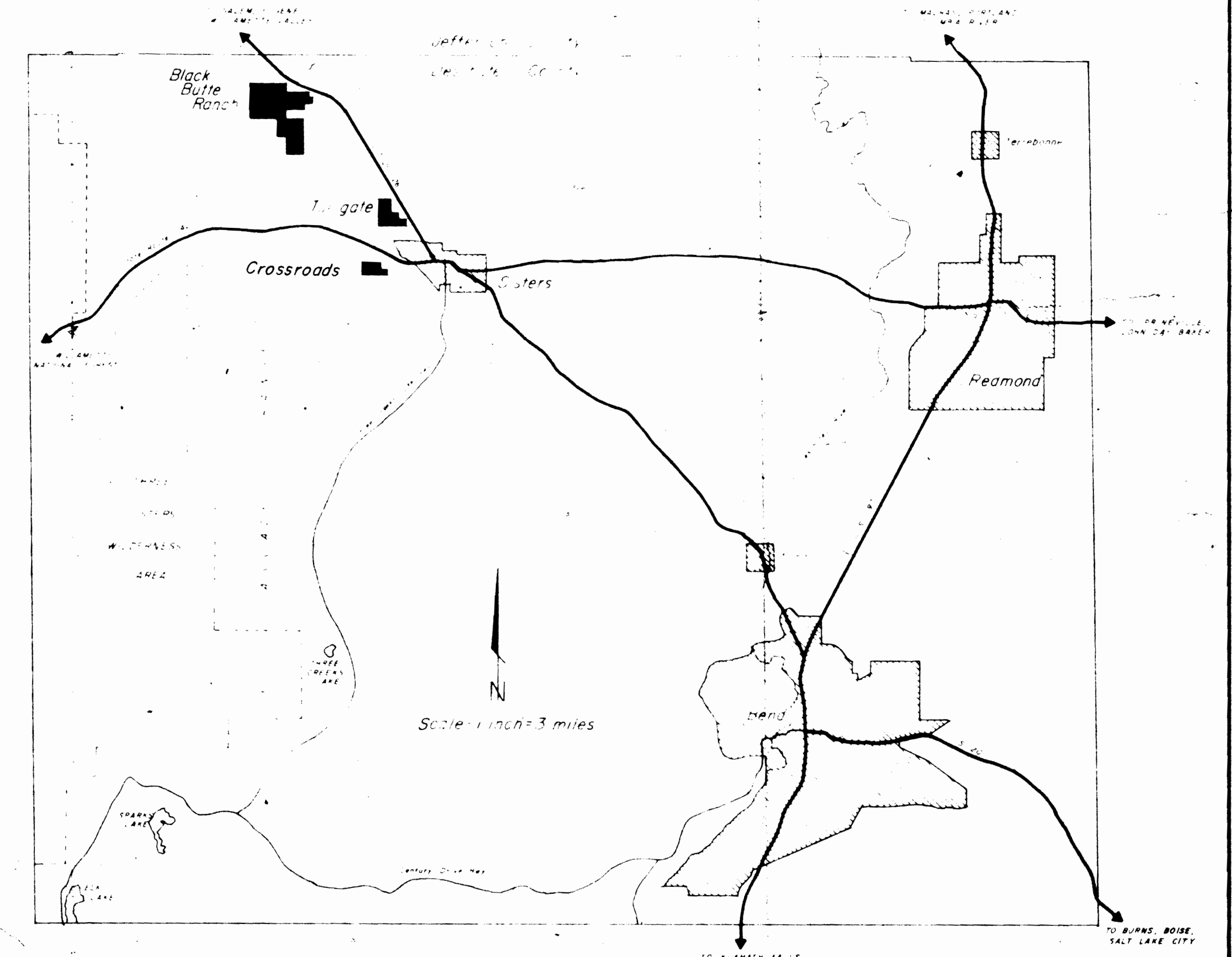
ALL INFORMATION CONTAINED HEREIN IS UNCLASSIFIED



SCALE: 1" = 200'

VICINITY MAP

Application No. G-7019  
Permit No. CG-72



EXISTING OLD SANTIAM WAGON ROAD (F.S. NO. 1315)