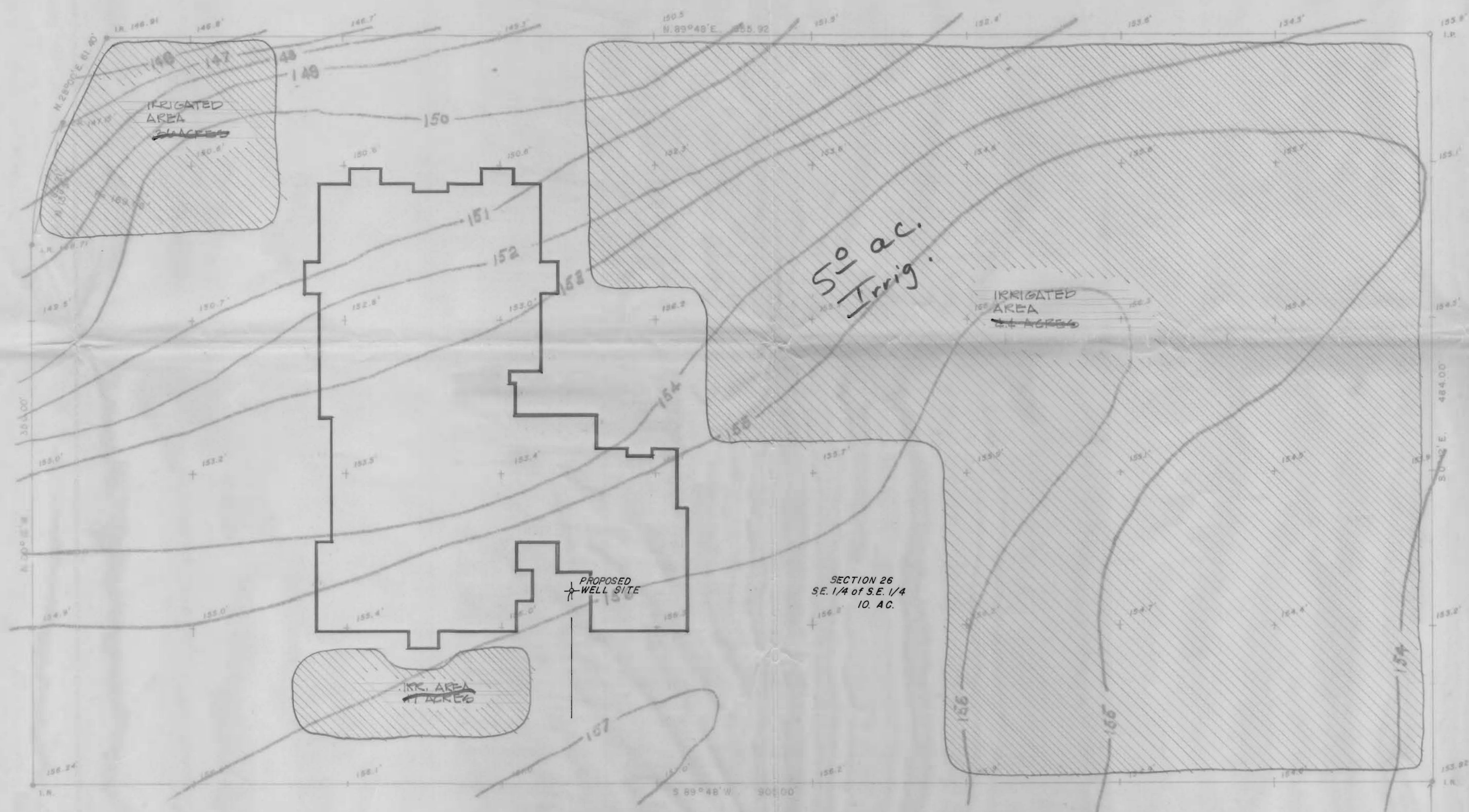


RECEIVED
 OCT 19 1976
 STATE RESOURCES DEPT.
 OREGON



IRRIGATION MAP
 Salem School District 24 J
 SECTION 26, T6 S. R. 3 W. W.M.
 MARION COUNTY, OREGON

Sanitary Sewer	— — — — —
Storm Sewer	— — — — —
Water Line	— — — — —
Gas Line	— — — — —
Power	— — — — —
Telephone	— — — — —

Application No. G-7552
 Permit No. G 7020



REGISTERED PROFESSIONAL LAND SURVEYOR OREGON DAVID L. BASQUE 783	PREPARED FOR, AND AT THE REQUEST OF	NO. 76-B-250
	SALEM SCHOOL DISTRICT 24 J	SCALE 1" = 50'
LOCATION:	DATE JUNE 25, 1976	W. MON. FOUND. = 3/4" (24" FROM 800 SET I I DENOTES RECORD DIST & BEARING
1/4 SEC. 25 T. 6 S. R. 3 W. W.M.	MARION COUNTY, OREGON	
BARNES SURVEYING & ENGINEERING, INC.		
2345 STATE STREET	SALEM, OREGON 97302	PHONE 391-0911
DAVID L. BASQUE LAND SURVEYOR	ELMER E. SEAY LAND PLANNER	