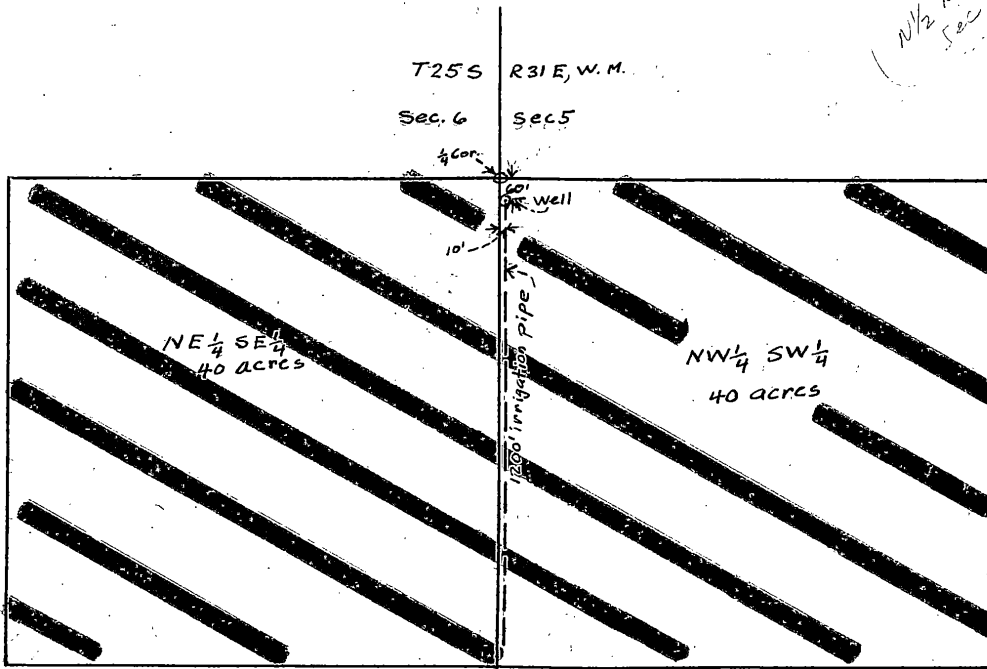


MAP TO ACCOMPANY APPLICATION
 BY GEORGE L^{and} ELLA J. ROBERTS
 TO APPROPRIATE AND USE
 GROUND WATER IN SECTIONS
 5^{and} 6 T25S R31E, W.M.

*N 1/2 NE 1/4
 Sec 5*



Scale 1" = 400'



Application No. G-7608
 Permit No. G 7056

RECEIVED
 DEC 15 1976
 WATER RESOURCES DEPT
 SALEM, OREGON