

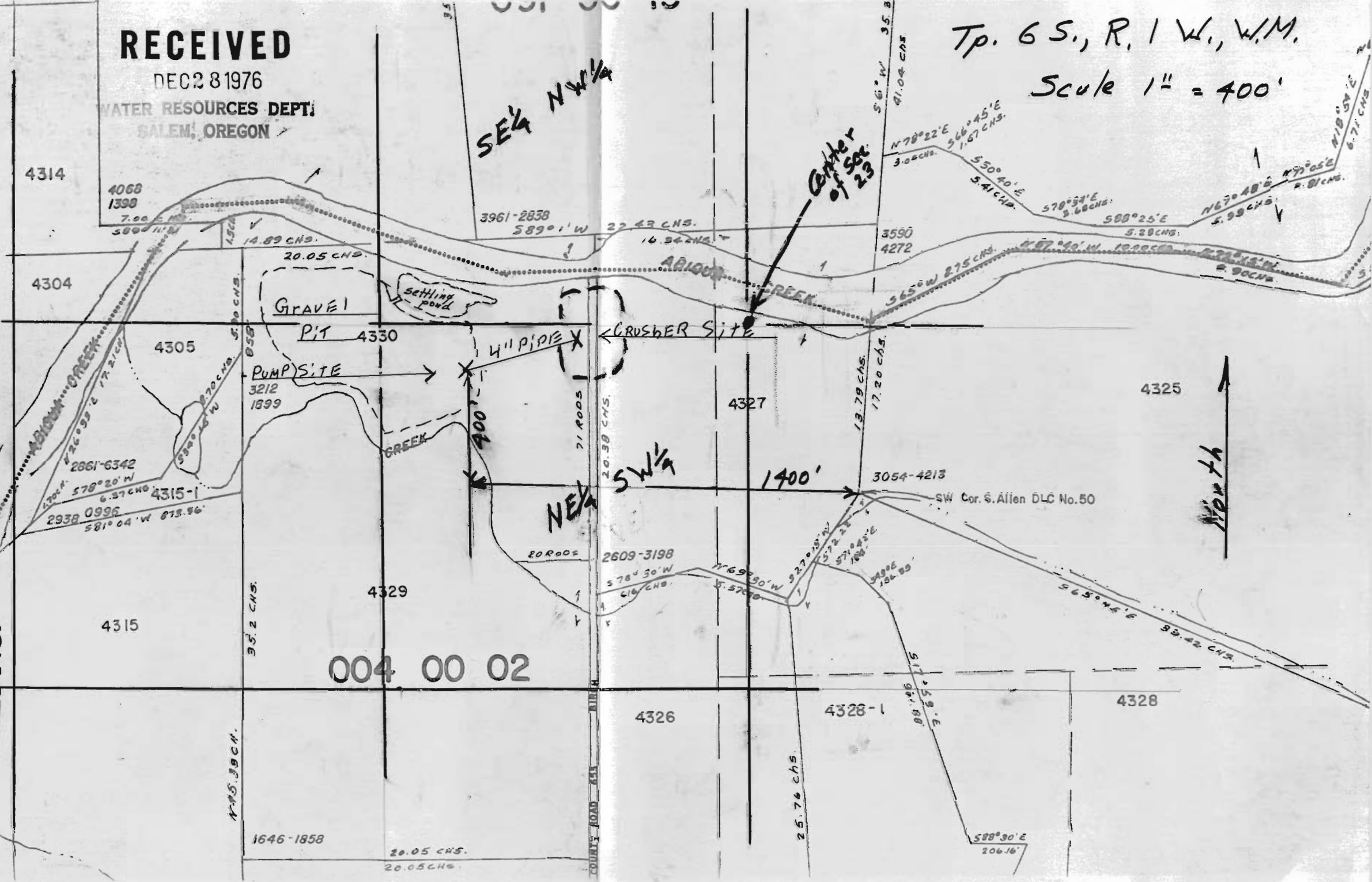
Application No. G-7623 SEE 22 6 1W
Permit No. G 2068

RECEIVED

DEC 28 1976

WATER RESOURCES DEPT.
SALEM, OREGON

Tp. 6 S., R. 1 W., W.M.
Scale 1" = 400'



North ↑

004 00 02

COUNTY ROAD 454

NE 1/4 SW 1/4

SE 1/4 NW 1/4

Center of Sec. 29

1400'

3961-2838

589° 1' W

22.43 CHS.

16.54 CHS.

14.89 CHS.

20.05 CHS.

Gravel Pit

GRAVEL PIT

4\"/>

GRUBBER SITE

4327

4325

4329

4326

4328-1

4328

4315

4314

4304

4305

35.2 CHS.

145.39 CHS.

71.00 CHS.

20.38 CHS.

13.79 CHS.

17.20 CHS.

3590

4272

35.8

41.04 CHS.

5.61 CHS.

3.00 CHS.

5.50 CHS.

5.41 CHS.

5.70 CHS.

5.88 CHS.

5.99 CHS.

5.20 CHS.

5.20 CHS.

5.20 CHS.

5.20 CHS.

5.20 CHS.

5.20 CHS.

5.20 CHS.

5.20 CHS.

5.20 CHS.

5.20 CHS.

5.20 CHS.

4068

1399

7.00 CHS.

589° 1' W

14.89 CHS.

1.84 CHS.

3.00 CHS.

5.20 CHS.

5.41 CHS.

5.70 CHS.

5.88 CHS.

5.99 CHS.

5.20 CHS.

5.20 CHS.

5.20 CHS.

5.20 CHS.

5.20 CHS.

5.20 CHS.

5.20 CHS.

5.20 CHS.

5.20 CHS.

5.20 CHS.

5.20 CHS.

5.20 CHS.

5.20 CHS.

5.20 CHS.

5.20 CHS.

5.20 CHS.

5.20 CHS.

5.20 CHS.

5.20 CHS.

5.20 CHS.

5.20 CHS.

5.20 CHS.

5.20 CHS.

5.20 CHS.

5.20 CHS.

5.20 CHS.

5.20 CHS.

5.20 CHS.

5.20 CHS.