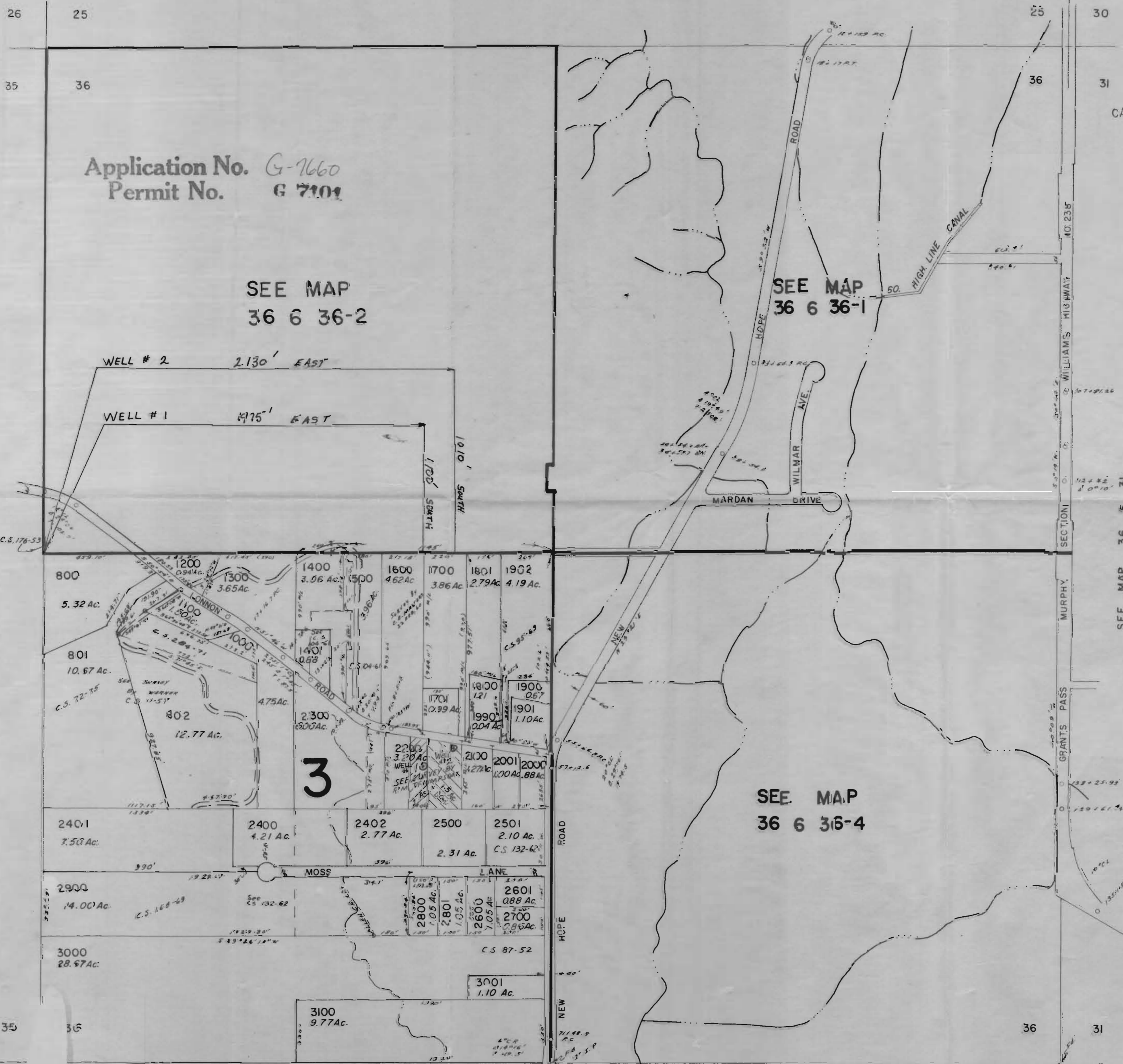


1" = 400'

SEE MAP 36 6 25



Application No. G-7660  
Permit No. G 7101

SEE MAP  
36 6 36-2

SEE MAP  
36 6 36-1

SEE MAP  
36 6 36-4

SEE MAP 37 6 1

CANCELLED T.L.  
102  
900

SEE MAP 36 6 31

RECEIVED  
JUL 25 1977  
WATER RESOURCES DEPT.  
SALEM, OREGON