

NW1/4 SECTION 2 T3S RIW W.M.

WASHINGTON COUNTY OREGON

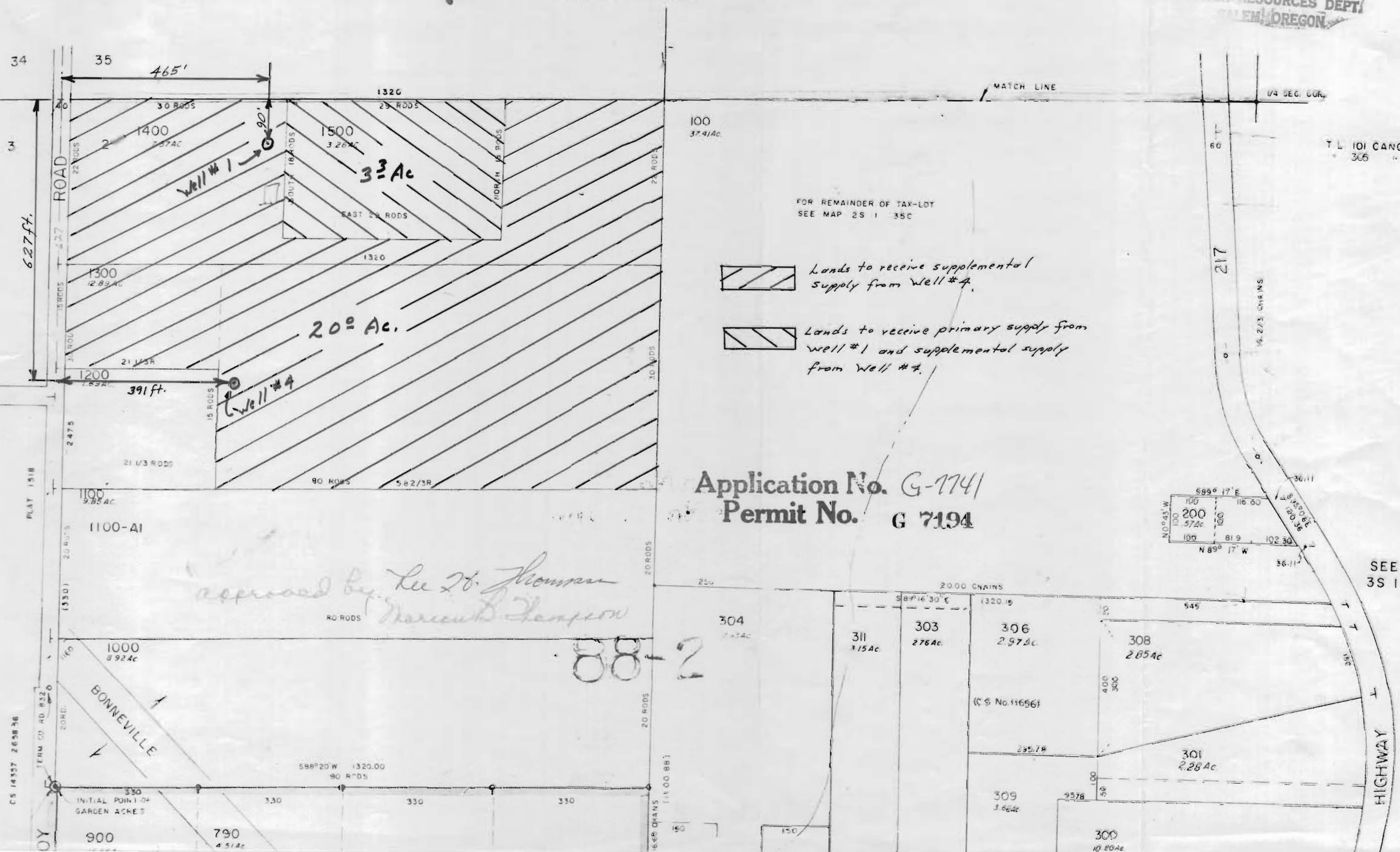
SCALE 1"=200'

RECEIVED


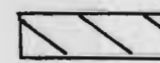
3S 1 2B

FEB 16 1977

WATER RESOURCES DEPT.  
SALEM, OREGON



FOR REMAINDER OF TAX-LOT  
SEE MAP 2S 1 35C

-  Lands to receive supplemental supply from Well #4.
-  Lands to receive primary supply from well #1 and supplemental supply from Well #4.

Application No. G-7741  
Permit No. G 7194

*approved by Lee St. Thomas  
Marion D. Thompson*

88-2

SEE MAP  
3S 1 2A