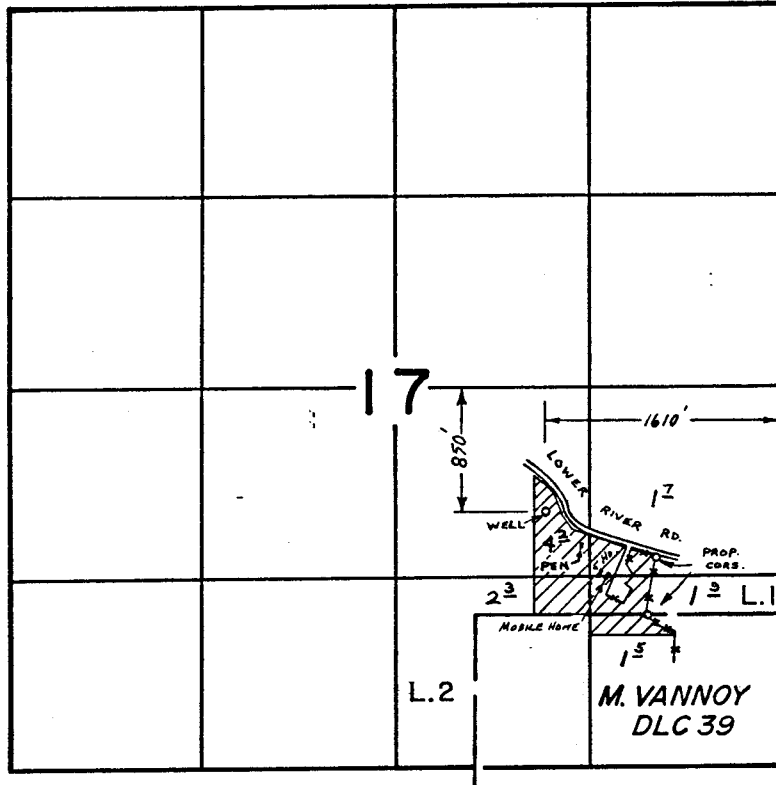


T.36 S., R.6 W., W.M.

RECEIVED

DEC 22 1981

WM. DIST. 14  
GRANTS PASS, ORE



**FINAL PROOF SURVEY**  
UNDER

Application No. G-7754 Permit No. G-7200  
IN NAME OF

CHARLES ALSPACH

Surveyed JUL. 31 1978, by B. SUND

D.H.M.  
P.T.S. - 1978 - 14 - C