

T 6 S, R 2 W

~~RECEIVED~~
RESOURCES DEPT.
OREGON

NE 1/4 NE 1/4

RECEIVED

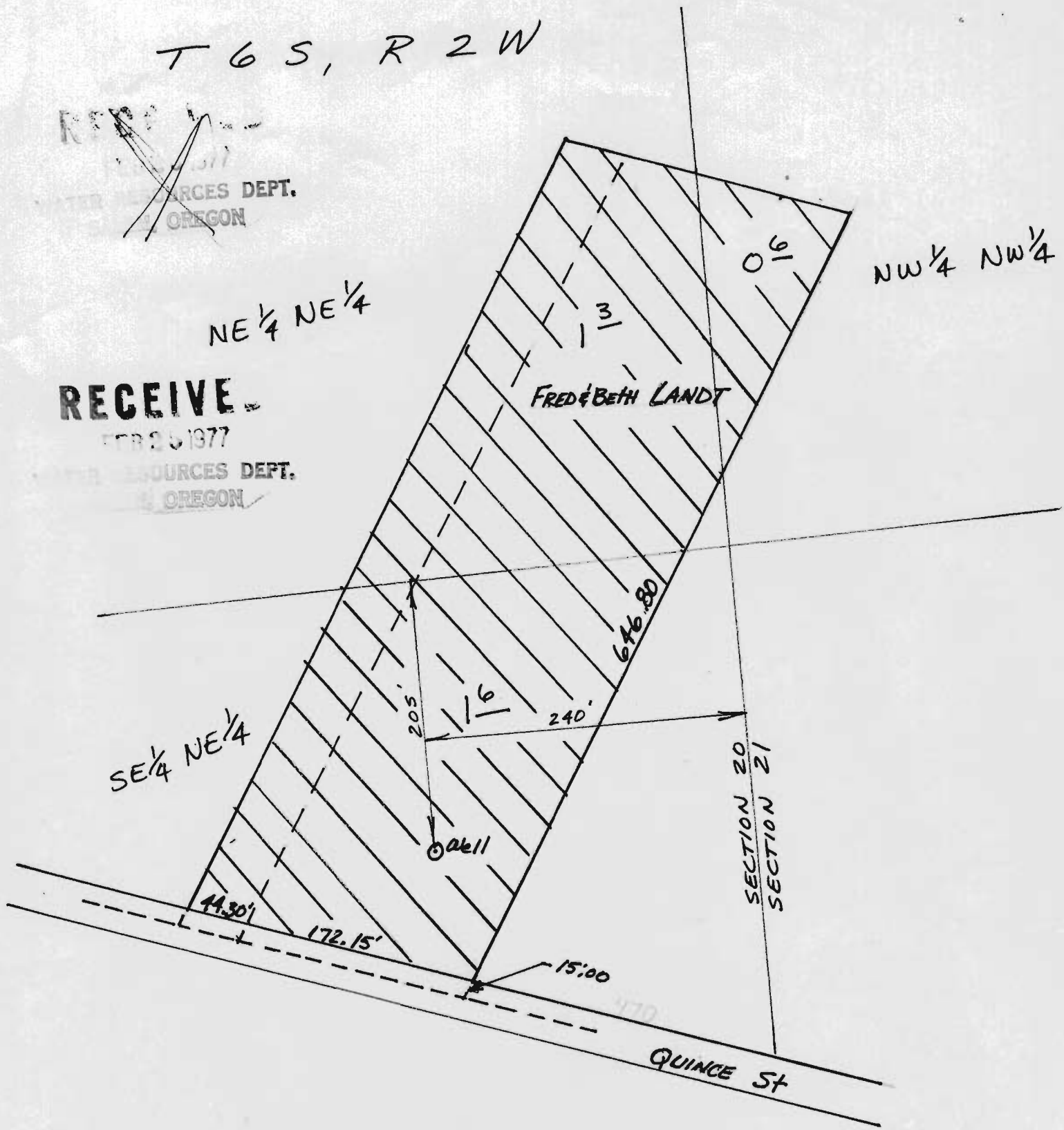
FEB 25 1977

RESOURCES DEPT.
OREGON

FRED & BETH LANDT

NW 1/4 NW 1/4

SE 1/4 NE 1/4



Application No. G-7839
Permit No. G 7274

SECTION 20 T.6S R2W
& 21

SCALE 1" = 100'