

TIS, R 3E
 1" = 400'
Proposal No. W-84

RECEIVED
 AUG 16 1977
 WATER RESOURCES DEPT
 SALEM, OREGON

WATER LINES
 --- WITHIN THE SERVICE AREA
 - - - WITHOUT THE SERVICE AREA

302-04

SERVICE AREA

WOODED

RESERVOIR SITE

ESTATES

ESTABLISHMENT OF SERVICE AREA
 AND

EXTRATERRITORIAL WATER LINE EXTENSION

WOODED HILLS ESTATES COMMUNITY WATER SYSTEM

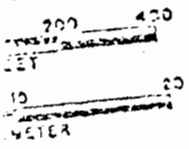
FIG. 4

WELL SITE

302-04

SEE MAP 1 SE 298

1:4000

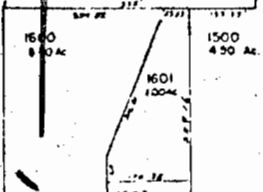
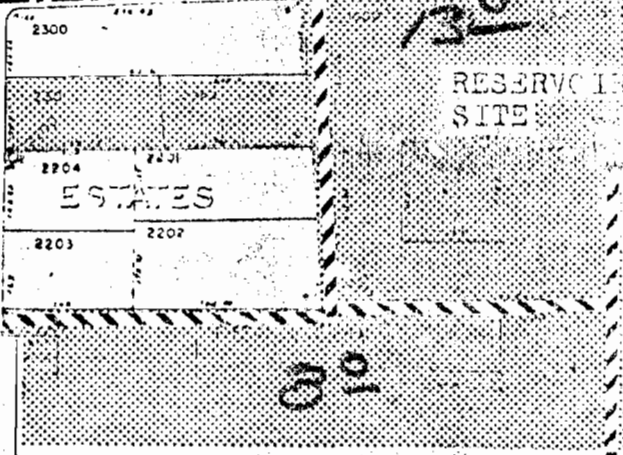
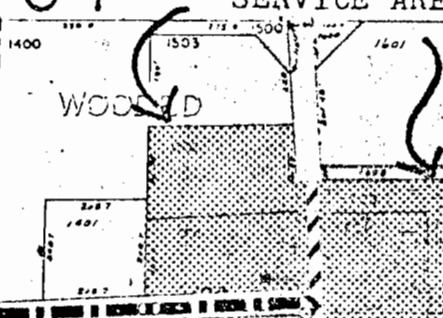


SEE MAP 1 SE 298

C/A 29

1250'

2540'
 1370'



1700
1000 AC.

2100
760 AC.

2300
100 AC.

2400
947 AC.

2401
138 AC.

2402
1027 AC.

2403
344 AC.

2101
1022 AC.