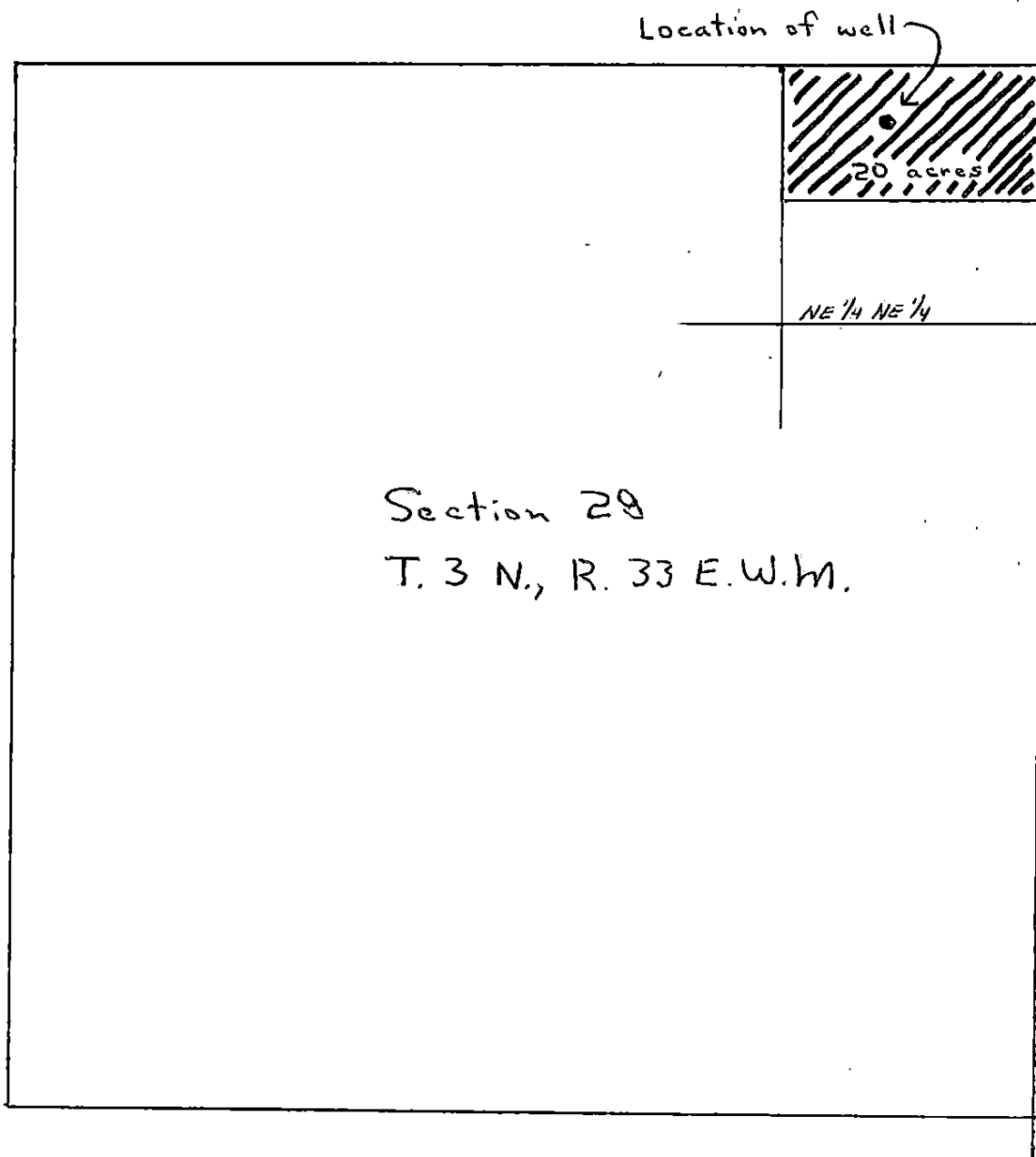


Application No. - G8280

Permit No. G 7622 Smith-Duff Ranches, Inc.

July 15, 1977



Location of Well:
300' S and 700' W
of NE corner
§ 28, T3N R33 EWM

Scale: 1st mile; 6 inches
1" : 880'

RECEIVED

JUL 19 1977

WATER RESOURCES DEPT
SALEM, OREGON