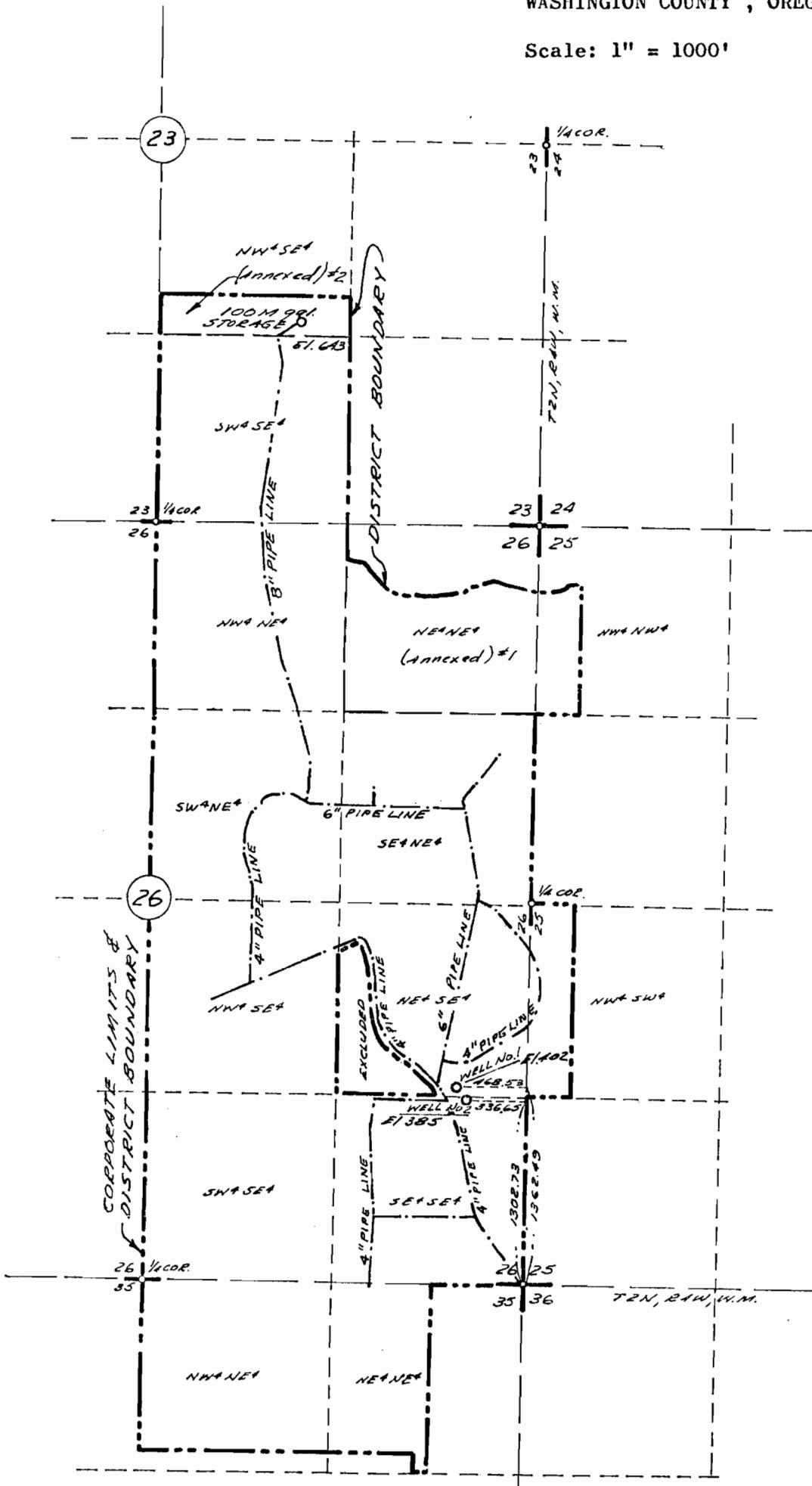


MAP TO ACCOMPANY APPLICATION  
 TO APPROPRIATE THE GROUND WATER  
 FOR STAR - SATELLITE IMPROVEMENT DISTRICT  
 IN SECTIONS 23, 26, and 35, T2N, R4W, W.M.  
 WASHINGTON COUNTY, OREGON

Scale: 1" = 1000'

5 February 1977



Application No. G-7812  
 Permit No. G-7903

RECEIVED  
 FEBRUARY 1977  
 WATER RESOURCES DEPT  
 SALEM, OREGON

h. a. mohr  
 CIVIL ENGINEER



339070