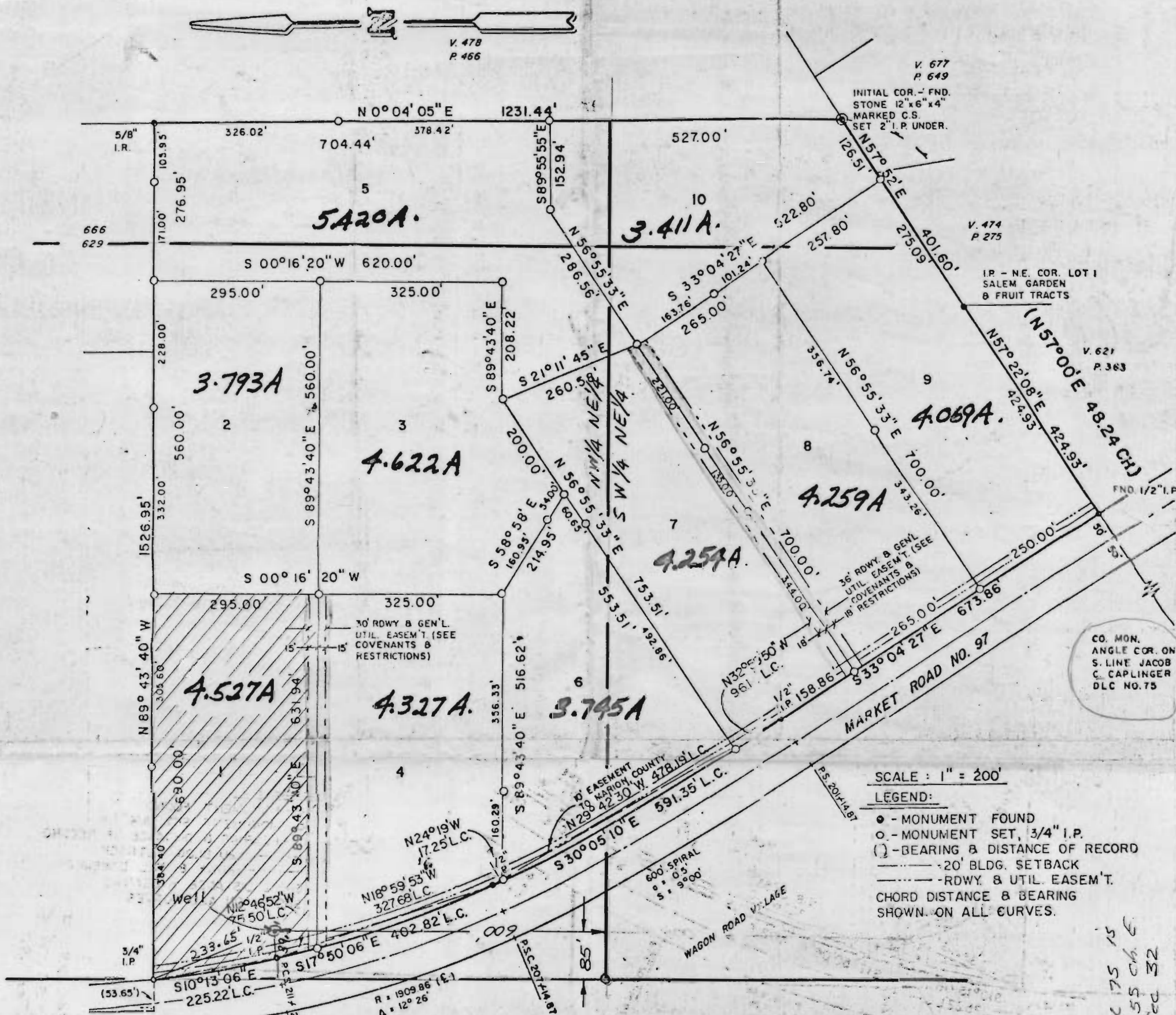


WAGUIN ROAD ESTATES

NE. 1/4, SECTION 32, T7S, R2W, W.M., MARION COUNTY, OR



STATE OF OREGON S.S.
COUNTY OF MARION

I, T. HAROLD TOMLINSON, COUNTY CLERK AND RECORDER, CERTIFY THAT THE WITHIN PLAT WAS RECEIVED AND DULY RECORDED BY ME IN THE MARION COUNTY RECORDS IN THE BOOK OF TOWN PLATS IN VOLUME _____ PAGE _____ ON THE _____ DAY OF _____, 1975 AT _____ O'CLOCK _____ M.

WELL IS LOCATED 225.4 S @ 88.8 E from N.W. Cor., Lot 1

CLERK/RECORDER
THE WITHIN PLAT HEREBY APPROVED:

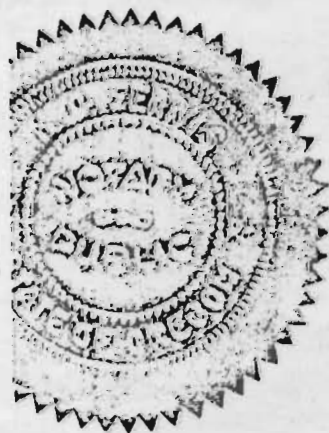
Application No. G 8690
Permit No. G 8019

COUNTY PLANNING COMMISSION

COUNTY SURVEYOR

COUNTY SANITARIAN

COUNTY ENGINEER



RECEIVED

MAR 14 1978

WATER RESOURCES DEPT.
SALEM, OREGON

angle Cor. S. Line Dec 175 15
11.88 ch. S @ 23.55 ch. E
from N. 1/4 Cor. Sec 32