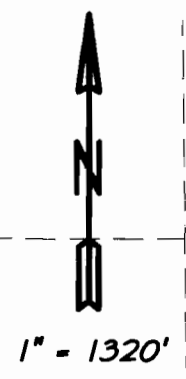


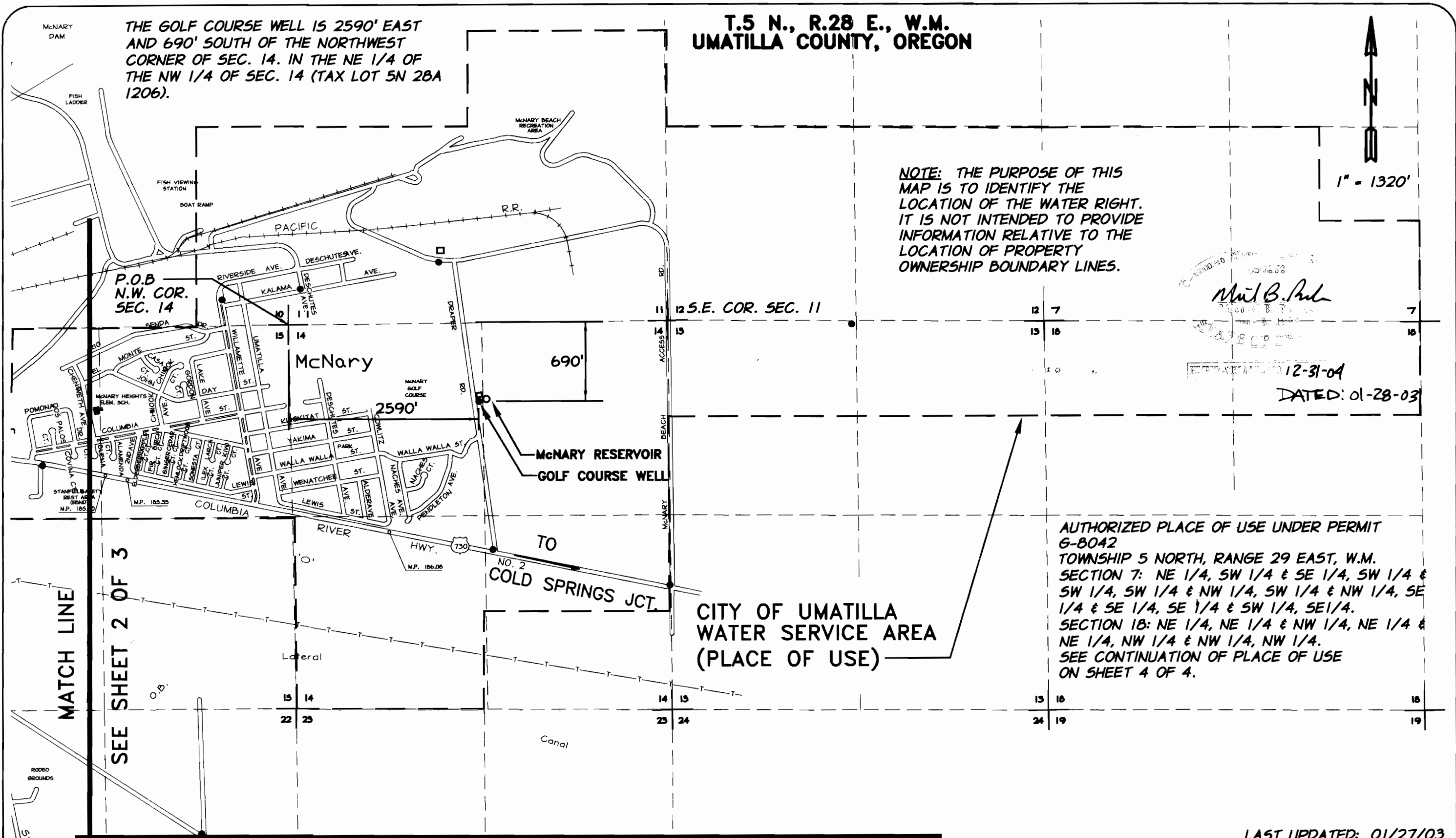
T.5 N., R.28 E., W.M.
UMATILLA COUNTY, OREGON



THE GOLF COURSE WELL IS 2590' EAST AND 690' SOUTH OF THE NORTHWEST CORNER OF SEC. 14. IN THE NE 1/4 OF THE NW 1/4 OF SEC. 14 (TAX LOT 5N 28A 1206).

NOTE: THE PURPOSE OF THIS MAP IS TO IDENTIFY THE LOCATION OF THE WATER RIGHT. IT IS NOT INTENDED TO PROVIDE INFORMATION RELATIVE TO THE LOCATION OF PROPERTY OWNERSHIP BOUNDARY LINES.

Maui B. Paul
REGISTERED PROFESSIONAL ENGINEER
No. 12345
EXPIRES 12-31-04
DATED: 01-28-03



AUTHORIZED PLACE OF USE UNDER PERMIT G-8042
TOWNSHIP 5 NORTH, RANGE 29 EAST, W.M.
SECTION 7: NE 1/4, SW 1/4 & SE 1/4, SW 1/4 & SW 1/4, SW 1/4 & NW 1/4, SW 1/4 & NW 1/4, SE 1/4 & SE 1/4, SE 1/4 & SW 1/4, SE 1/4.
SECTION 18: NE 1/4, NE 1/4 & NW 1/4, NE 1/4 & NE 1/4, NW 1/4 & NW 1/4, NW 1/4.
SEE CONTINUATION OF PLACE OF USE ON SHEET 4 OF 4.

MATCH LINE SEE SHEET 3 OF 3

APPLICATION: G-8592
PERMIT: G-8042
DATE OF SURVEY: INTERTIE WELL, MARCH 1995
GOLF COURSE WELL, SEPTEMBER 1996



CLAIM OF BENEFICIAL USE MAP
CITY OF UMATILLA
GOLF COURSE WELL & INTERTIE WELL
UMATILLA, OREGON

FIGURE
1 of 4

LAST UPDATED: 01/27/03

T.5 N., R.28 E., W.M.
UMATILLA COUNTY, OREGON

CITY OF UMATILLA
WATER SERVICE AREA
(PLACE OF USE)

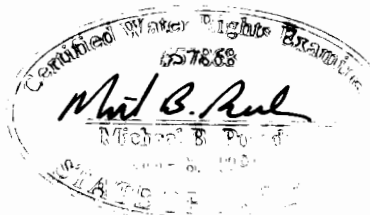


1" = 1320'

NOTE: THE PURPOSE OF THIS
MAP IS TO IDENTIFY THE
LOCATION OF THE WATER RIGHT.
IT IS NOT INTENDED TO PROVIDE
INFORMATION RELATIVE TO THE
LOCATION OF PROPERTY
OWNERSHIP BOUNDARY LINES.

TO
IRRIGON
COLUMBIA

THE INTERTIE WELL IS 2520' SOUTH AND
150' WEST OF THE NORTHEAST CORNER
OF SEC. 16. IN THE SE 1/4 OF THE NE
1/4 OF SEC. 16 (TAX LOT 5N 28 16AD
800).



12-31-04

DATED 01-28-03

LAST UPDATED: 01/27/03

APPLICATION: G-8592

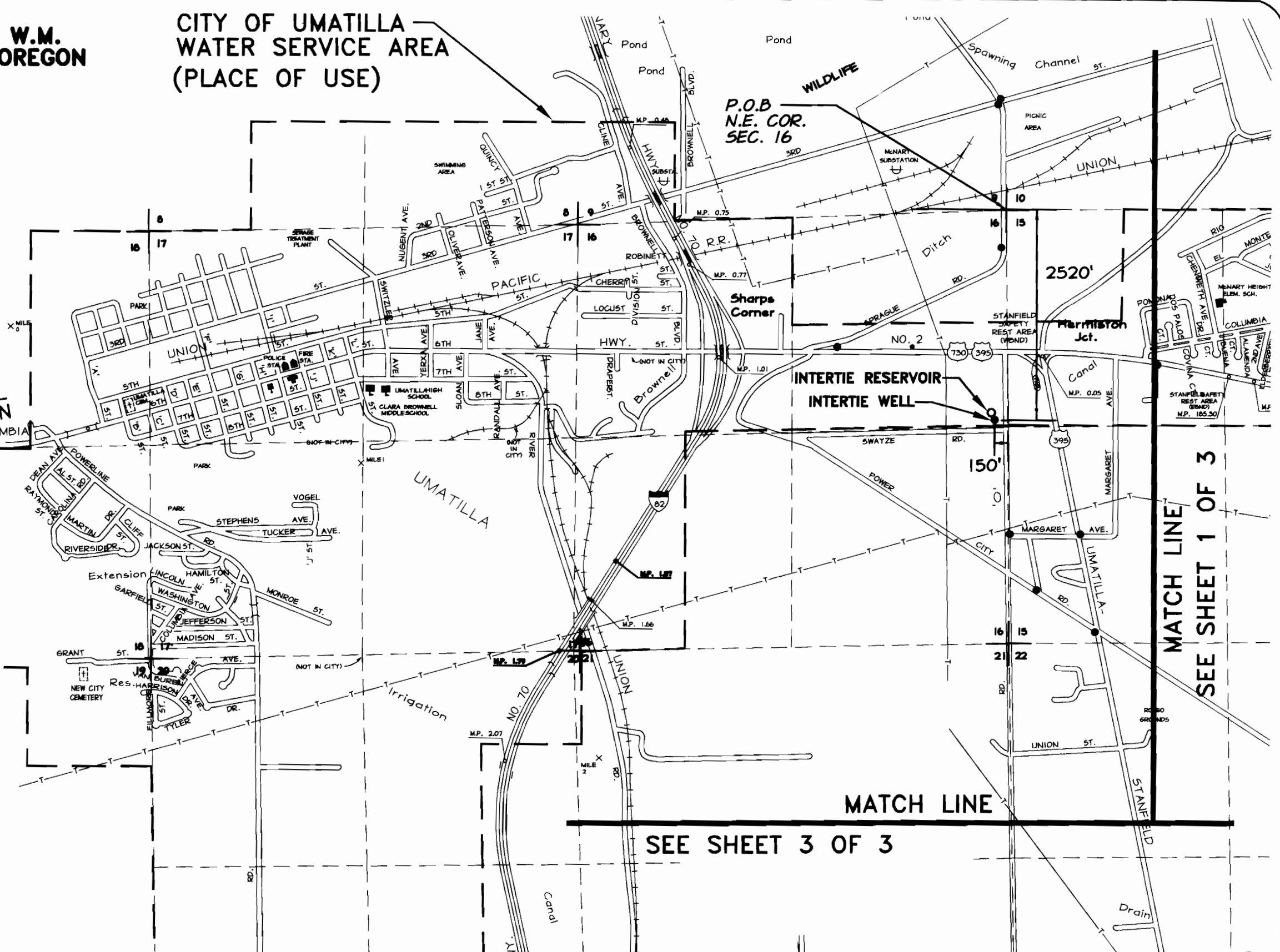
PERMIT: G-8042

DATE OF SURVEY: INTERTIE WELL, MARCH 1995
GOLF COURSE WELL, SEPTEMBER 1996



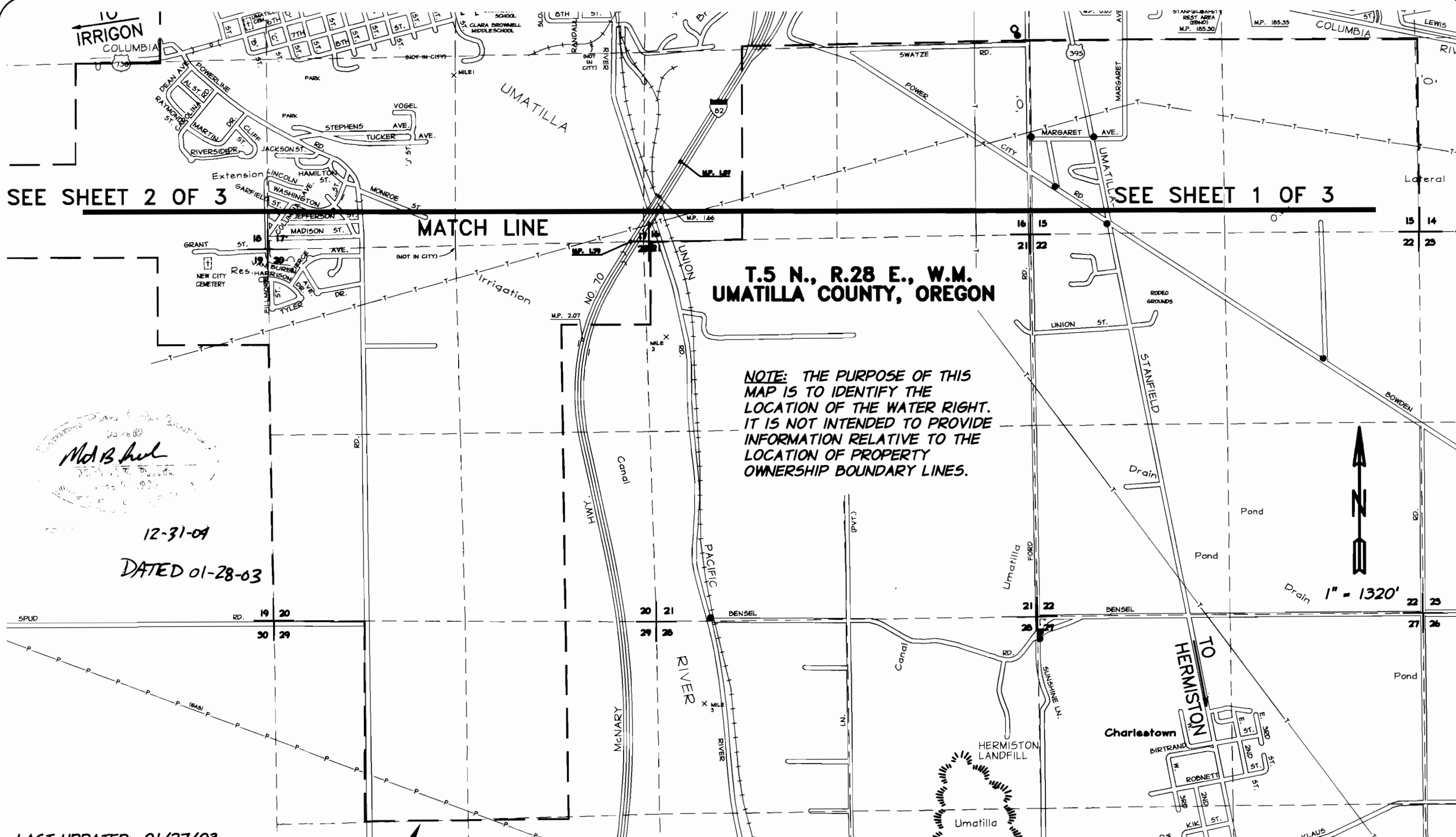
CLAIM OF BENEFICIAL USE MAP
CITY OF UMATILLA
GOLF COURSE WELL & INTERTIE WELL
UMATILLA, OREGON

FIGURE
2 of 4



MATCH LINE
SEE SHEET 1 OF 3

SEE SHEET 3 OF 3



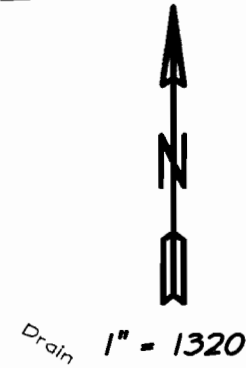
SEE SHEET 2 OF 3

SEE SHEET 1 OF 3

MATCH LINE

**T.5 N., R.28 E., W.M.
UMATILLA COUNTY, OREGON**

**NOTE: THE PURPOSE OF THIS
MAP IS TO IDENTIFY THE
LOCATION OF THE WATER RIGHT.
IT IS NOT INTENDED TO PROVIDE
INFORMATION RELATIVE TO THE
LOCATION OF PROPERTY
OWNERSHIP BOUNDARY LINES.**



M.B. h...
12-31-01

DATED 01-28-03

LAST UPDATED: 01/27/03

**CITY OF UMATILLA
WATER SERVICE AREA
(PLACE OF USE)**

APPLICATION: G-8592
PERMIT: G-8042
DATE OF SURVEY: INTERTIE WELL, MARCH 1995
GOLF COURSE WELL, SEPTEMBER 1996



**CLAIM OF BENEFICIAL USE MAP
CITY OF UMATILLA
GOLF COURSE WELL & INTERTIE WELL
UMATILLA, OREGON**

**FIGURE
3 of 4**

T.5 N., R.28 E., W.M.
UMATILLA COUNTY, OREGON

(CONTINUED)

AUTHORIZED PLACE OF USE UNDER PERMIT G-3112 AND TRANSFER T-8701
TOWNSHIP 5 NORTH, RANGE 28 EAST, W.M.

SECTION 8: SE 1/4, SW 1/4 & SE 1/4, SE 1/4 & SW 1/4, SE 1/4.

SECTION 9: SW 1/4, SW 1/4.

SECTION 10: NE 1/4, SE 1/4 & SE 1/4, SE 1/4.

SECTION 11: SW 1/4, NE 1/4 & SE 1/4, NE 1/4 & NE 1/4, SE 1/4 & NW 1/4, SE 1/4 & SE 1/4, SE 1/4 & SW 1/4, SE 1/4 & NE 1/4, SW 1/4 & NW 1/4, SW 1/4 & SE 1/4, SW 1/4 & SW 1/4.

SECTION 12: NE 1/4, SE 1/4 & NW 1/4, SE 1/4 & SE 1/4, SE 1/4 & SW 1/4, SE 1/4 & NE 1/4, SW 1/4 & NW 1/4, SW 1/4 & SE 1/4, SW 1/4 & SW 1/4, SW 1/4.

SECTION 13: NE 1/4, NE 1/4 & NW 1/4, NE 1/4 & NE 1/4, NW 1/4 & NW 1/4, NW 1/4

SECTION 14: NE 1/4, NE 1/4 & NW 1/4, NE 1/4 & SE 1/4, NE 1/4 & SW 1/4, NE 1/4 & NE 1/4, NW 1/4, SE 1/4, NW 1/4 & NW 1/4, NW 1/4 & SW 1/4, NW 1/4 & NE 1/4, SW 1/4 & SE 1/4, SW 1/4 & SW 1/4, SW 1/4 & NW 1/4, SW 1/4 & NE 1/4, SE 1/4 & NW 1/4, SE 1/4.

SECTION 15: NE 1/4, NE 1/4 & SE 1/4, NE 1/4 & NW 1/4, NE 1/4 & SW 1/4, NE 1/4 & NE 1/4, NW 1/4 & SE 1/4, NW 1/4 & SW 1/4, NW 1/4.

SECTION 16: SE 1/4, NE 1/4 & SW 1/4, NE 1/4 & NE 1/4, NW 1/4 & SE 1/4, NW 1/4 & NW 1/4, NW 1/4 & SW 1/4, NW 1/4 & NW 1/4, SW 1/4 & SW 1/4, SW 1/4.

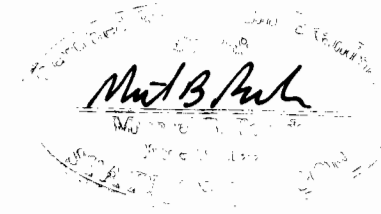
SECTION 17: NE 1/4, NE 1/4 & NW 1/4, NE 1/4 & NE 1/4, NW 1/4 & NW 1/4, NW 1/4 & SW 1/4, NW 1/4 & SE 1/4, NW 1/4 & SW 1/4, NE 1/4 & SE 1/4, NE 1/4 & NE 1/4, SE 1/4 & NW 1/4, SE 1/4, NE 1/4, SW 1/4 & NW 1/4, SW 1/4 & SE 1/4, SW 1/4 & SW 1/4, SW 1/4.

SECTION 18: NE 1/4, NE 1/4 & SE 1/4, NE 1/4 & NE 1/4, SE 1/4 & NW 1/4, SE 1/4 & SE 1/4, SE 1/4 & SW 1/4, SE 1/4 & SE 1/4, SW 1/4 & SW 1/4, SW 1/4.

SECTION 19: NE 1/4, NE 1/4

SECTION 20: NE 1/4, NE 1/4 & NW 1/4, NE 1/4 & SW 1/4, NE 1/4 & NE 1/4, NW 1/4 & NW 1/4, NW 1/4 & SE 1/4, NW 1/4 & SW 1/4, NW 1/4 & NW 1/4, SE 1/4 & SW 1/4, SE 1/4 & NE 1/4, SW 1/4 & NW 1/4, SW 1/4 & SE 1/4, SW 1/4 & SW 1/4, SW 1/4.

SECTION 29: NW 1/4, NE 1/4 & SW 1/4, NE 1/4 & NE 1/4, NW 1/4 & SE 1/4, NW 1/4.



12-31-09

DATED 01-28-03

LAST UPDATED: 01/27/03

APPLICATION: G-8592

PERMIT: G-8042

DATE OF SURVEY: INTERTIE WELL, MARCH 1995
GOLF COURSE WELL, SEPTEMBER 1996

ap anderson
perly
& associates, inc.

CLAIM OF BENEFICIAL USE MAP
CITY OF UMATILLA
GOLF COURSE WELL & INTERTIE WELL
UMATILLA, OREGON

FIGURE
4 of 4