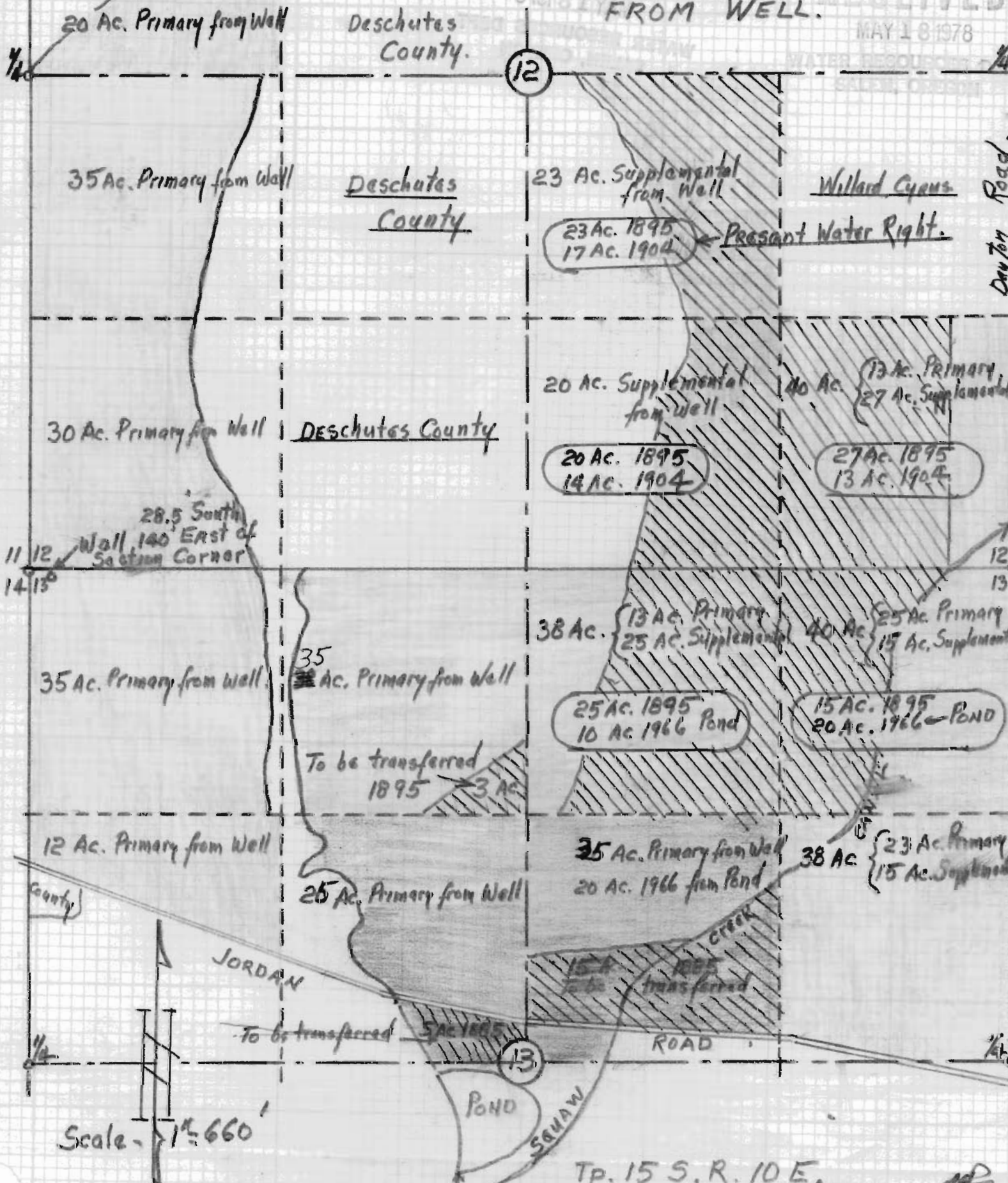


Section No. G 65 83
Permit No. G 8147

MAP TO ACCOMPANY KEITH CYRUS APPLICATION FOR GROUND WATER FROM WELL.

RECEIVED
MAY 18 1978
WATER RESOURCES



20 Ac. Primary from Well

Deschutes County.

12

35 Ac. Primary from Well

Deschutes County

23 Ac. Supplemental from Well

Willard Cyrus

23 Ac. 1895
17 Ac. 1904

Present Water Right.

Dayton Road.

30 Ac. Primary from Well

Deschutes County

20 Ac. Supplemental from Well

40 Ac. { 13 Ac. Primary
27 Ac. Supplemental

20 Ac. 1895
14 Ac. 1904

27 Ac. 1895
13 Ac. 1904

28.5 South Wall 140 East of Section Corner

11 12 14 15

35 Ac. Primary from Well

35 Ac. Primary from Well

38 Ac. { 13 Ac. Primary
25 Ac. Supplemental

40 Ac. { 25 Ac. Primary
15 Ac. Supplemental

25 Ac. 1895
10 Ac. 1966 Pond

15 Ac. 1895
20 Ac. 1966 Pond

To be transferred 1895 3 Ac

12 Ac. Primary from Well

25 Ac. Primary from Well

35 Ac. Primary from Well
20 Ac. 1966 from Pond

38 Ac. { 23 Ac. Primary
15 Ac. Supplemental

County

JORDAN CREEK

SQUAW CREEK

To be transferred 5 Ac 1895

ROAD

13

POND

Scale - 1" = 660'

Tp. 15 S. R. 10 E.