

T.1 S. R. 2 E. W. M

G 8166

SECTION 1

SE 1/4

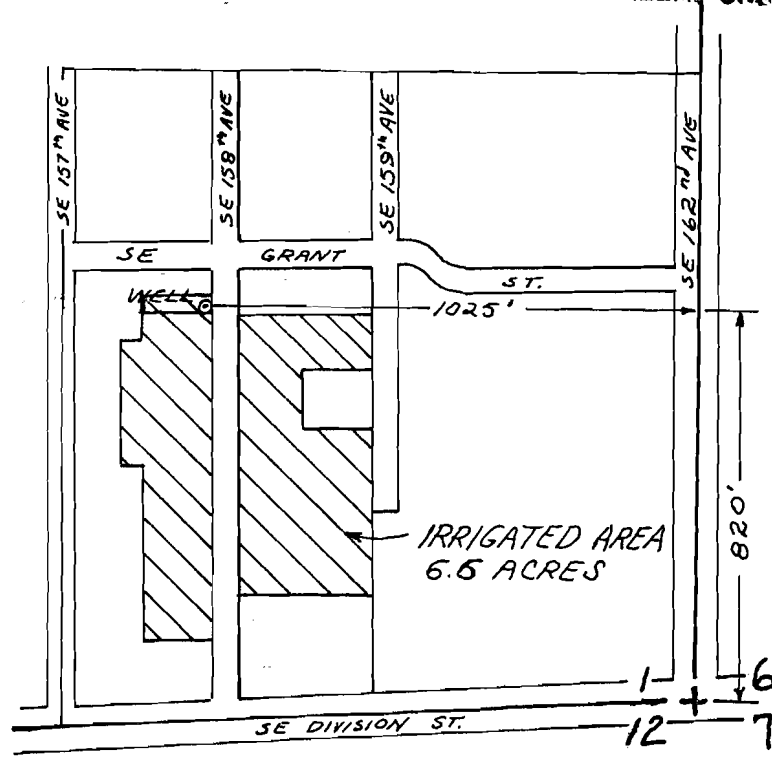
1" = 400'

RECEIVED

JUN 22 1978

WATER RESOURCES DEPT.  
SALEM, OREGON

JUL 20 1978  
COUNTY



153E

approved by  
applicant:

x *Bertha Zumwalt*  
5-22-78 *Sec. Treas.*  
*Lynch Water Corp*

AREA TO BE  
IRRIGATED  
FROM

LYNCH WATER CO-OPERATIVE  
WELL