

NW 1/4 SW 1/4
5.05 Ac. SUPPLEMENTAL

NE 1/4 SW 1/4
2.54 Ac. SUPPLEMENTAL

SW 1/4 SW 1/4
7.82 Ac. SUPPLEMENTAL

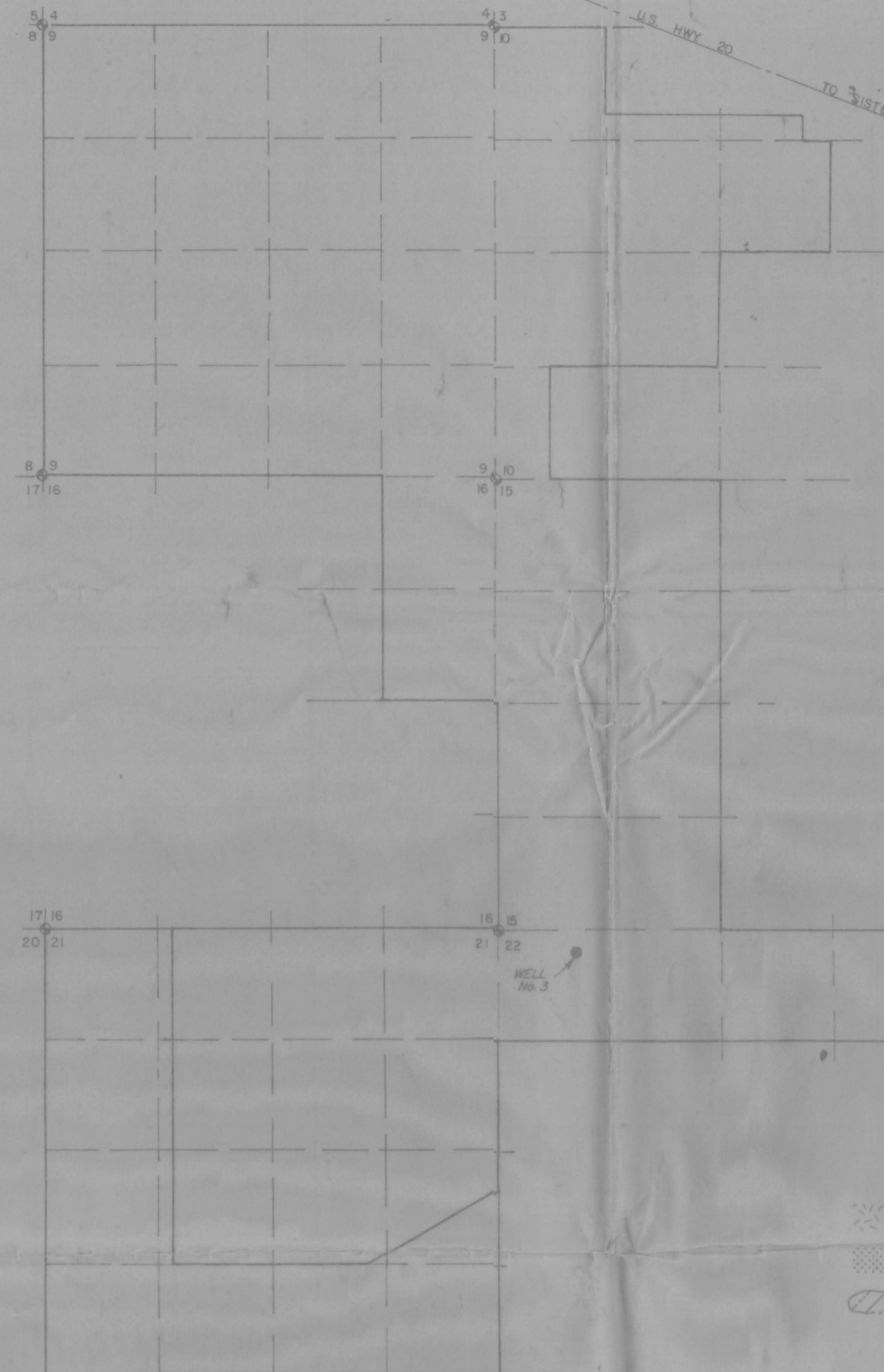
SE 1/4 SW 1/4
2.36 Ac. SUPPLEMENTAL

NW 1/4 NW 1/4
11.02 Ac. SUPPLEMENTAL
0.65 Ac. LAKE MAINTENANCE

NE 1/4 NW 1/4
7.66 Ac. SUPPLEMENTAL
3.84 Ac. LAKE MAINTENANCE

NW 1/4 NE 1/4
1.13 Ac. LAKE MAINTENANCE

NE 1/4 NE 1/4
1.14 Ac. LAKE MAINTENANCE



BLACK BUTTE RANCH WELL No. 3
DOMESTIC USE AREA
T.14 S., R. 9 E., DESCHUTES Co., OREGON

LEGEND

- PRIMARY ACREAGE
- SUPPLEMENTAL ACREAGE
- LAKE MAINTENANCE ACREAGE

Application No. G-9119
Permit No. G 8503

RECEIVED
FEB 2 1979
WATER RESOURCES DEPT.
SALEM, OREGON

Design By	REVISIONS			Date
	No.	By		
Drawn By S.L.P.				
Checked By G.H.				
Approved By				
Date				
Scale 1" = 200'				
Drawing No.				

BLACK BUTTE RANCH WELL No. 3
WATER ALLOCATION MAP
of SEC. 15, 21 & 22 T.14 S. R.9 E.
W.M. DESCHUTES COUNTY, OREGON
BROOKS RESOURCES CORPORATION
WATER RIGHTS

NW 1/4 SW 1/4
5.05 Ac. SUPPLEMENTAL

NE 1/4 SW 1/4
2.54 Ac. SUPPLEMENTAL

2.02 AC. TO BE ASSIGNED

2.54 AC. TO BE ASSIGNED

0.36 AC. TO
BE ASSIGNED

0.90 AC. TO BE ASSIGNED

SW 1/4 SW 1/4
7.82 Ac.
SUPPLEMENTAL

SE 1/4 SW 1/4
2.36 Ac. SUPPLEMENTAL

790' E.

3.38 AC. TO BE ASSIGNED

WELL

NW 1/4 NW 1/4
1102 Ac. SUPPLEMENTAL
065 Ac. LAKE MAINTENANCE

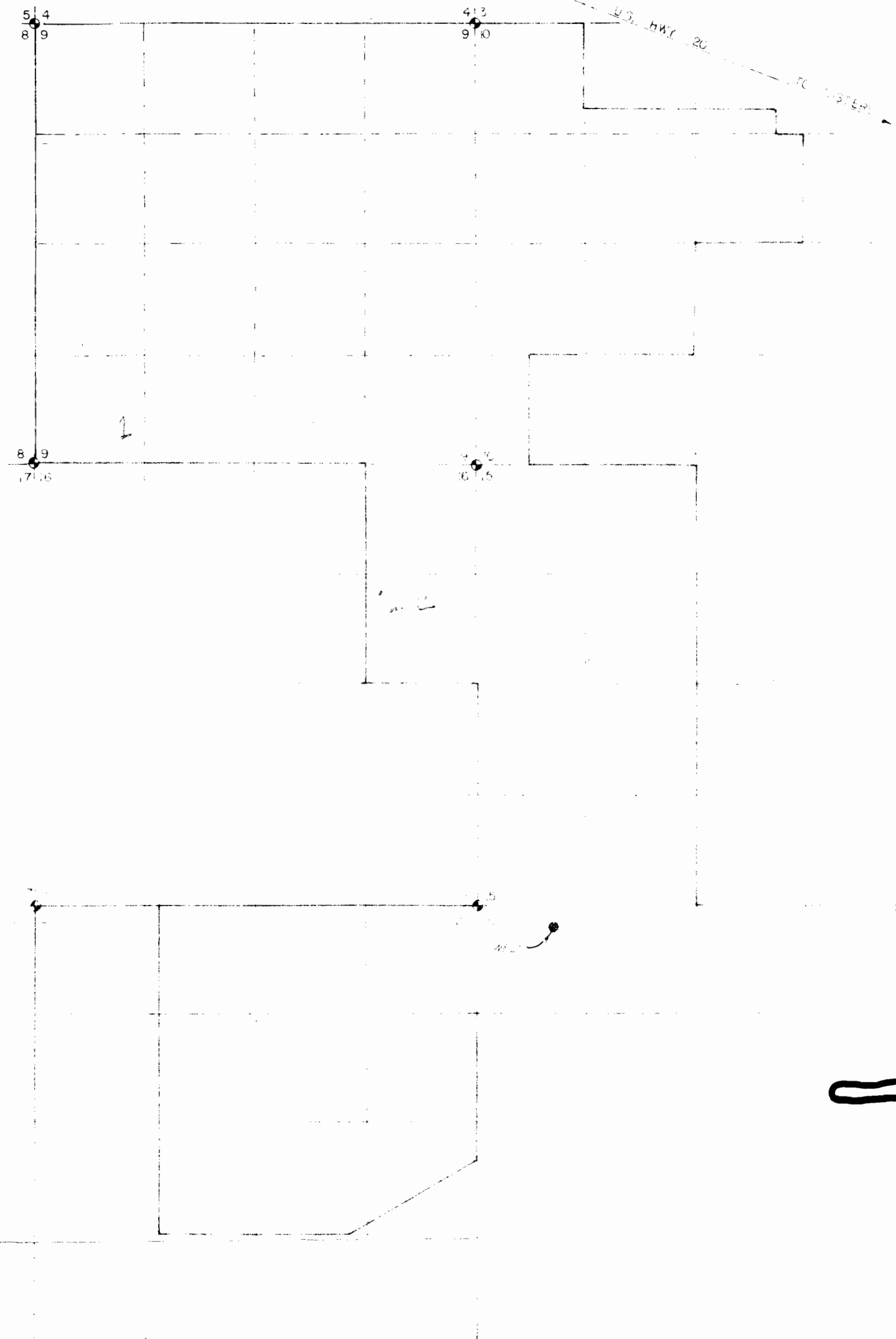
NE 1/4 NW 1/4
766 Ac. SUPPLEMENTAL
384 Ac. LAKE MAINTENANCE

1.13 AC. TO BE ASSIGNED

1.14 AC. TO BE ASSIGNED


NW 1/4 NE 1/4
113 Ac. LAKE MAINTENANCE




NE 1/4 NE 1/4
113 Ac. LAKE MAINTENANCE



BLACK BUTTE RANCH
PERMIT G-8503
WATER ALLOCATION MAP

LEGEND:

 PORTIONS OF WATER RIGHT
PERMIT G-8503 TO BE ASSIGNED TO
BLACK BUTTE RANCH ASSOCIATION

 R.F. ACRES
 EXCLUDED AREAS
 LAKE MAINTENANCE

RECEIVED
MAY 25 1982
WATER RESOURCES DEPT
SALEM, OREGON

Design By Drawn By S.L.P. Checked By G.H. Approved By Date Scale 1"=200' Drawing No. 743-93-C1	REVISIONS		BLACK BUTTE RANCH WELL No. 3 WATER ALLOCATION MAP 1/4 SEC. 15, 21 & 22 T.14S. R.9E W.M. DESCHUTES COUNTY, OREGON BROOKS RESOURCES CORPORATION WATER RIGHTS
	No.	By	

Century West Engineering Corporation

Bend,
Oregon

17 18
20 21

16 15
21 22

NE 1/4 NW 1/4
2.20 Ac. PRIMARY

NW 1/4 NE 1/4
4.20 Ac. PRIMARY

NE 1/4 NE 1/4
4.74 Ac. PRIMARY
4.89 Ac. SUPPLEMENTAL

SE 1/4 NW 1/4
3.53 Ac. PRIMARY

SW 1/4 NE 1/4
2.62 Ac. PRIMARY

SE 1/4 NE 1/4
9.88 Ac. PRIMARY

NE 1/4 SW 1/4
1.08 Ac. PRIMARY

NW 1/4 SE 1/4
3.84 Ac. PRIMARY

NE 1/4 SE 1/4
2.43 Ac. PRIMARY

PRIMARY ACREAGE
SUPPLEMENTAL ACREAGE
LAKE MAINTENANCE ACREAGE

Application No. G-9119
Permit No. G 8503

RECEIVED
FEB 2 1979
WATER RESOURCES DEPT.
SALEM, OREGON

Design By	REVISIONS			BLACK BUTTE RANCH WELL No. 3 WATER ALLOCATION MAP of SEC. 15, 21 & 22 T.14S. R.9E. W.M. DESCHUTES COUNTY, OREGON BROOKS RESOURCES CORPORATION WATER RIGHTS	WELL No. 3 ON MAP S. R.9E. OREGON CORPORATION ITS
Drawn By S.L.P.	No.	By	Date		
Checked By G.H.					
Approved By					
Date					
Scale 1" = 200'					
Drawing No.					

Century West Engineering Corporation

Bend,
Oregon

2/2

2/2