

**RECEIVED**

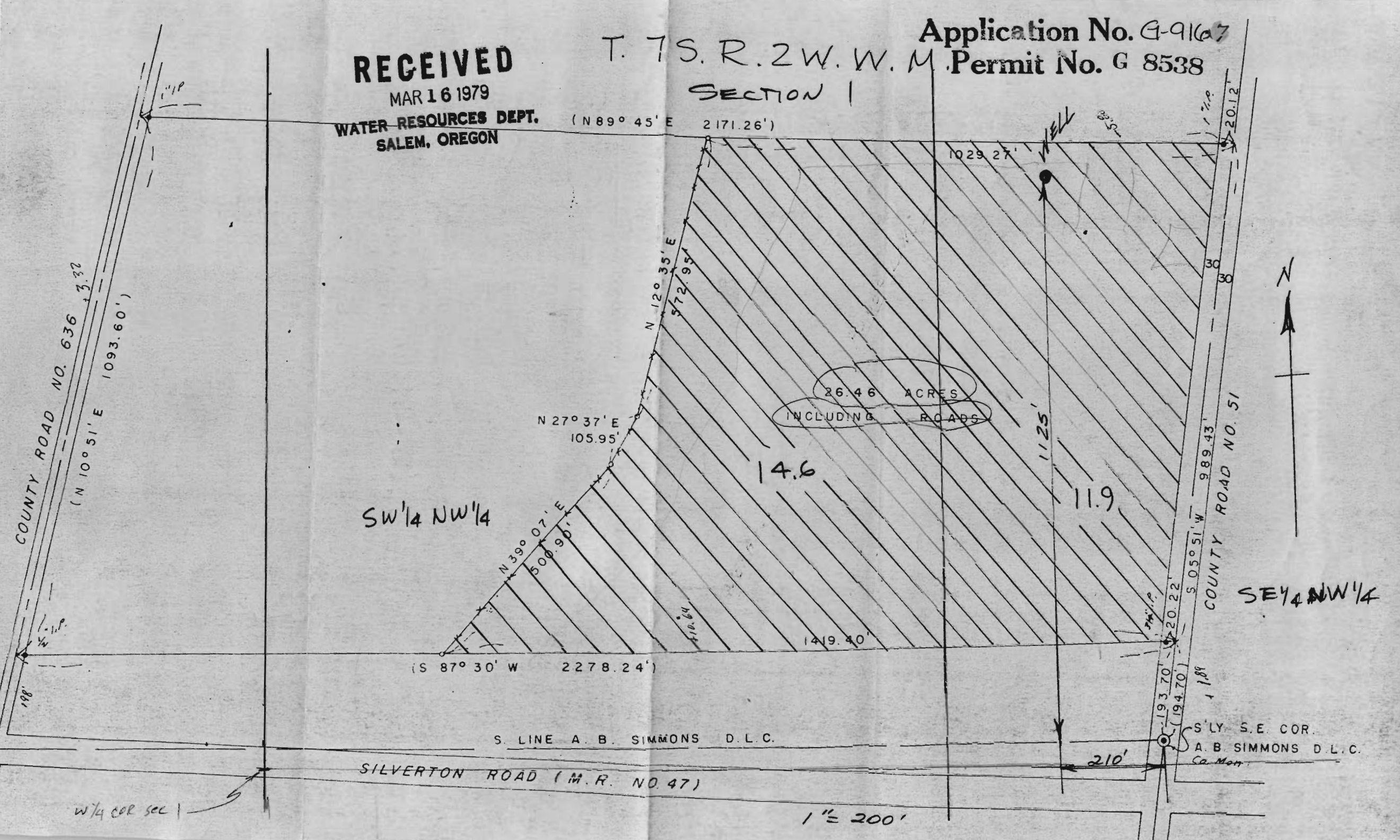
MAR 16 1979

WATER RESOURCES DEPT.  
SALEM, OREGON

T. 7 S. R. 2 W. W. M. Permit No. G 8538

Application No. G-9167

SECTION 1



(N 89° 45' E 2171.26')

1029.27'

20.12'

COUNTY ROAD NO. 636  
(N 10° 51' E 1093.60')

N 120° 35' E  
572.95'

26.46 ACRES

INCLUDING ROADS

N 27° 37' E  
105.95'

14.6

11.9

SW 1/4 NW 1/4

N 39° 07' E  
500.90'

COUNTY ROAD NO. 51  
S 05° 51' W 989.43'

SE 1/4 NW 1/4

(S 87° 30' W 2278.24')

1419.40'

S. LINE A. B. SIMMONS D.L.C.

SILVERTON ROAD (M.R. NO. 47)

S 1/4 S.E. COR.  
A. B. SIMMONS D.L.C.  
Ca. Mon.

210'

1" = 200'

W 1/4 COR SEC 1

