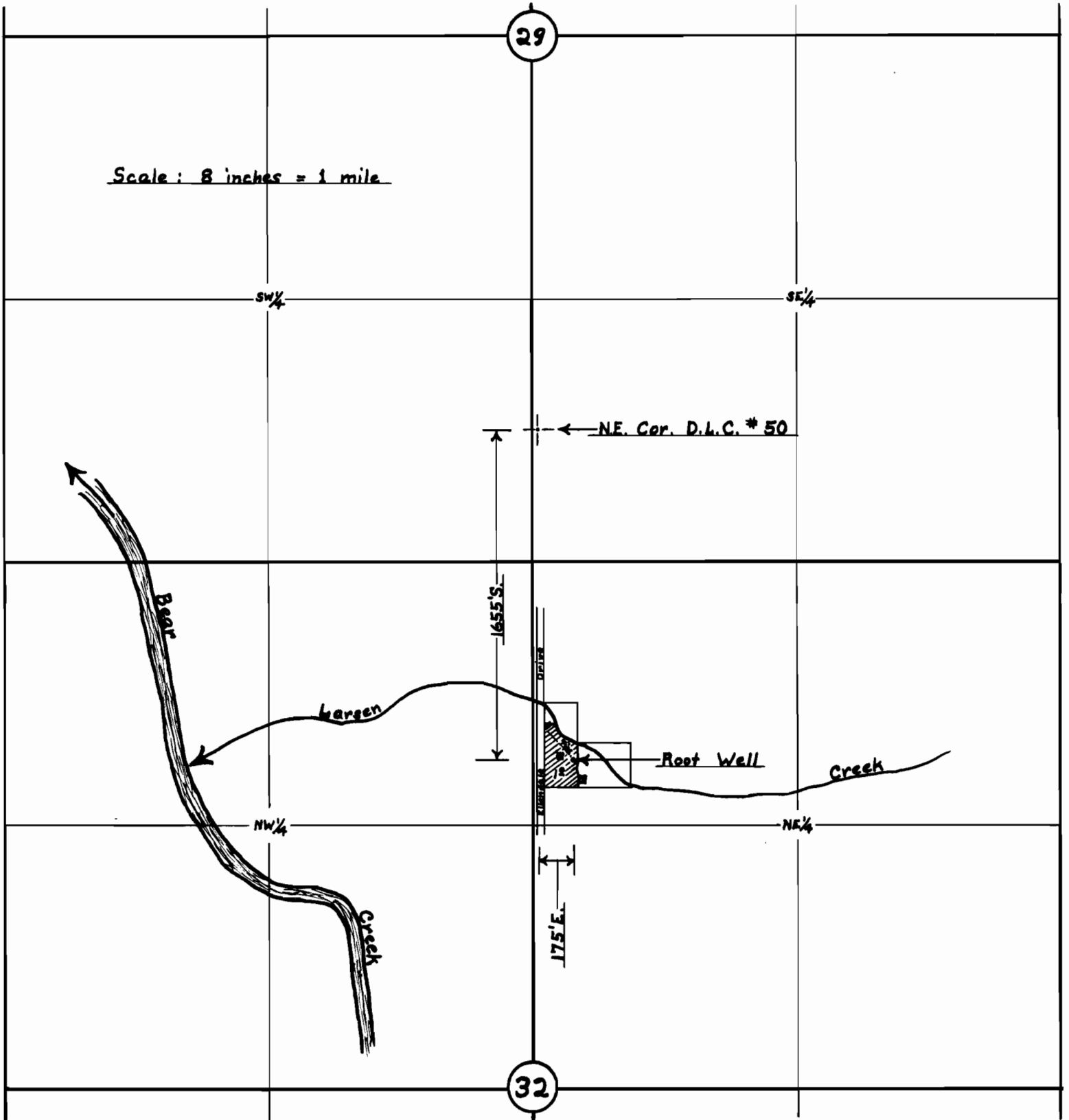


T. 37 S., R. 1 W., W.M.



Scale: 8 inches = 1 mile

29

SW 1/4

SE 1/4

NE. Cor. D.L.C. # 50

Bear

Wagon

Root Well

Creek

NW 1/4

NE 1/4

Creek

175' E.

1655' S.

32

Map to accompany application in the names of Horace L. and Wilma M. Root, for a permit to construct Root Well and use water therefrom for Irrigation purposes.

This Office ----- May 17, 1958.

David C. Hendrix, Watermaster Dist. # 15

Application No. G-980

Permit No. G-891