

Corrected PLAT of

LOTS 77 to 100 INCLUSIVE

GLENMORRIE PARK

Situated in the JESSE BULLOCK D.L.C. 46, in SECTION 15, TOWNSHIP 2 SOUTH, RANGE 1 EAST, OF THE WILLAMETTE MERIDIAN, CLACKAMAS COUNTY, OREGON.

Approved this 25 day of June 1941.

10 11

E. L. Pope
County Judge

15 14

G. W. Russell
County Commissioner
G. J. Randall
County Commissioner

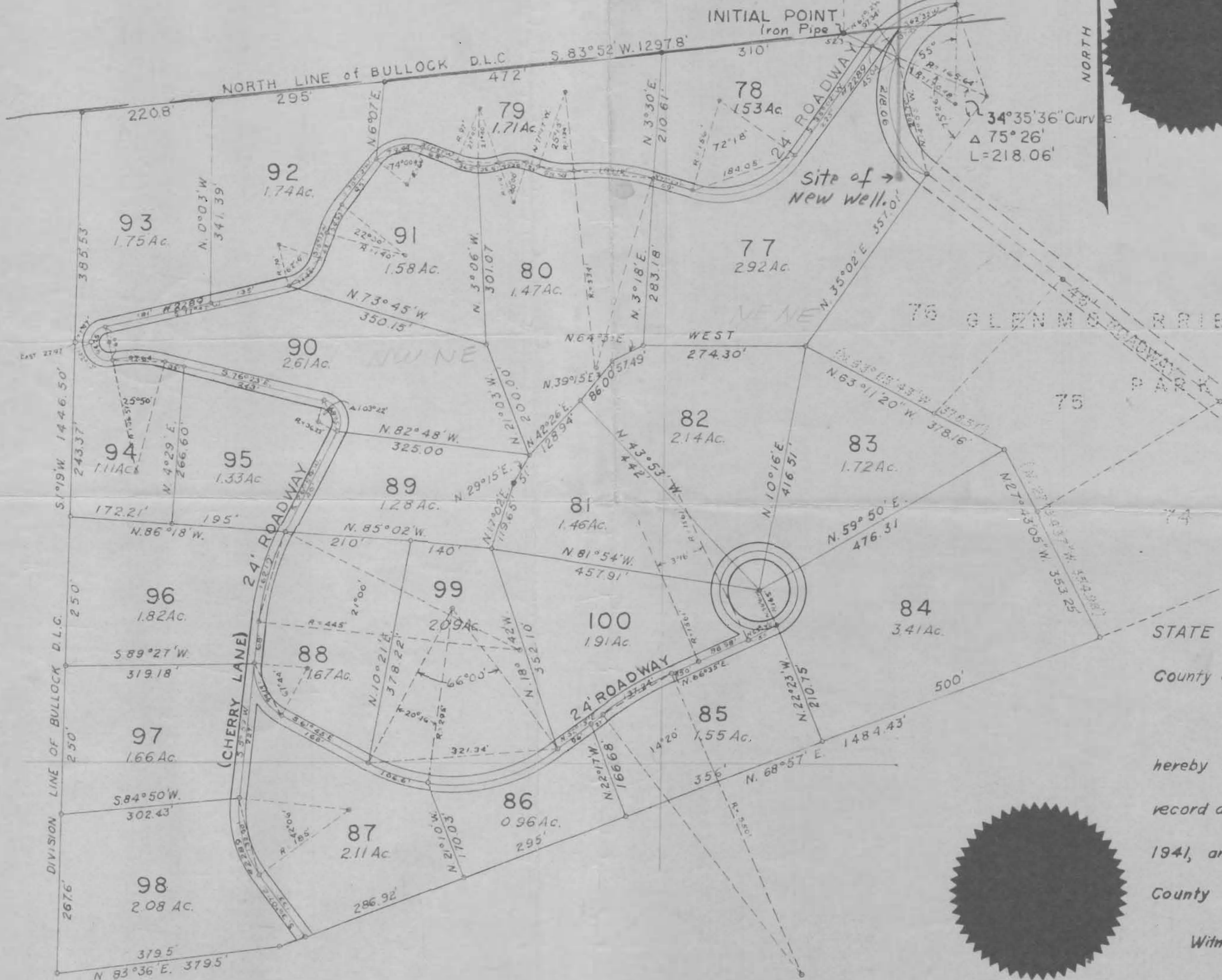
T. J. S. R. I. E

Attest: W. M. Guy H. Pace
County Clerk

Cora L. Hunt
Dep.

Rufus E. Wood
County Assessor
D. R. Medrum
County Surveyor

SCALE 1" = 150'



All taxes to and inclusive of December 31, 1940 are paid.

By, Fred Reubacher
Sheriff
Silbert Woodard
Deputy

Users
#1 Standby pump - 6" 35-foot gal
#2 - in use
95 users

STATE OF OREGON }
County of Clackamas } ss.

I, Guy H. Pace, County Clerk in and for said County do hereby certify that the attached instrument of writing was received for record at Oregon City on this 25 day of June 1941, and recorded in Book 23 Record of Townplats for said County and State. 9:15 AM

Witness my hand and seal of office affixed.

Guy H. Pace
County Clerk
Cora L. Hunt Dep.