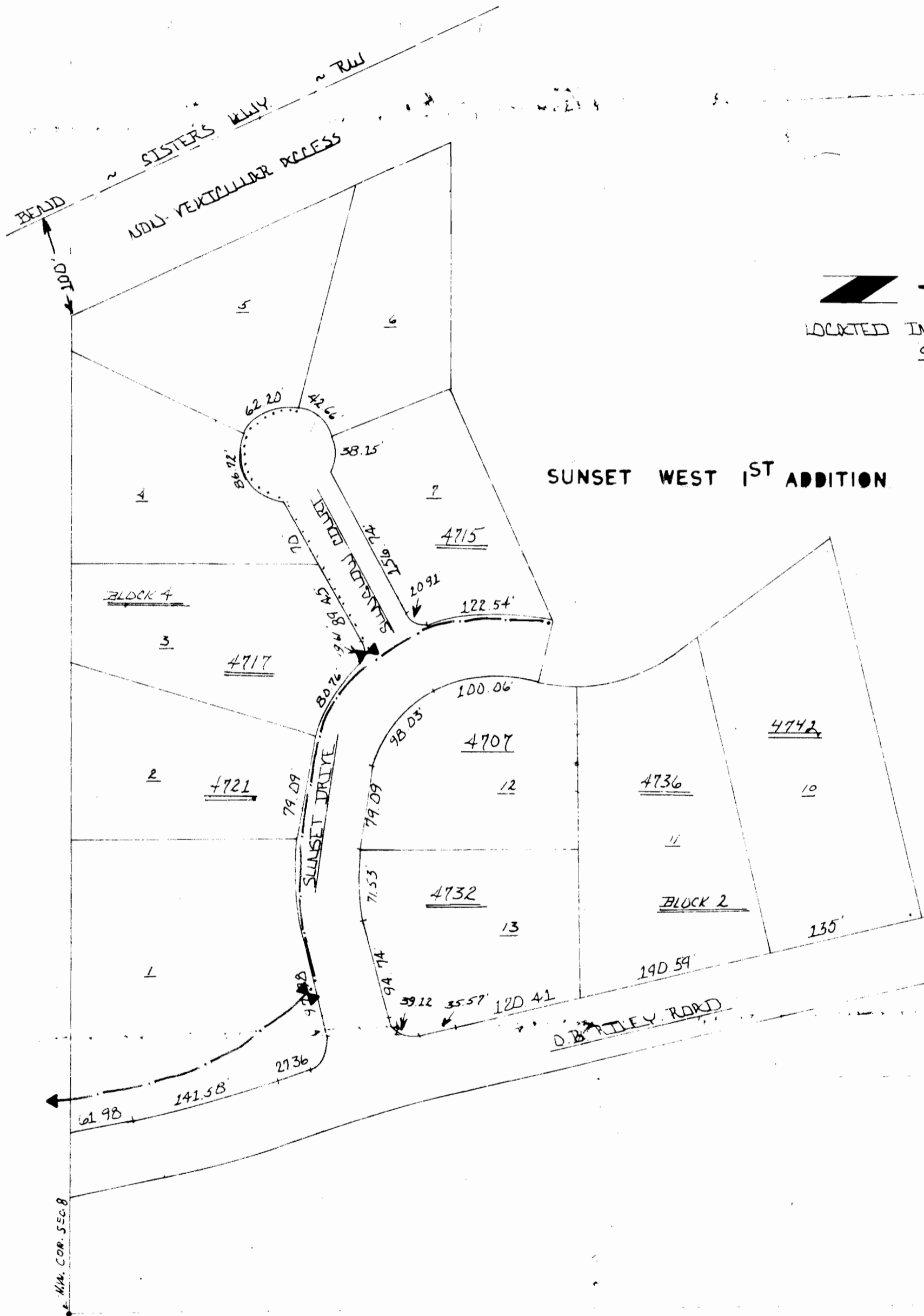


# SUNSET WEST 2ND ADDITION

cont'd of  
N.W. 14



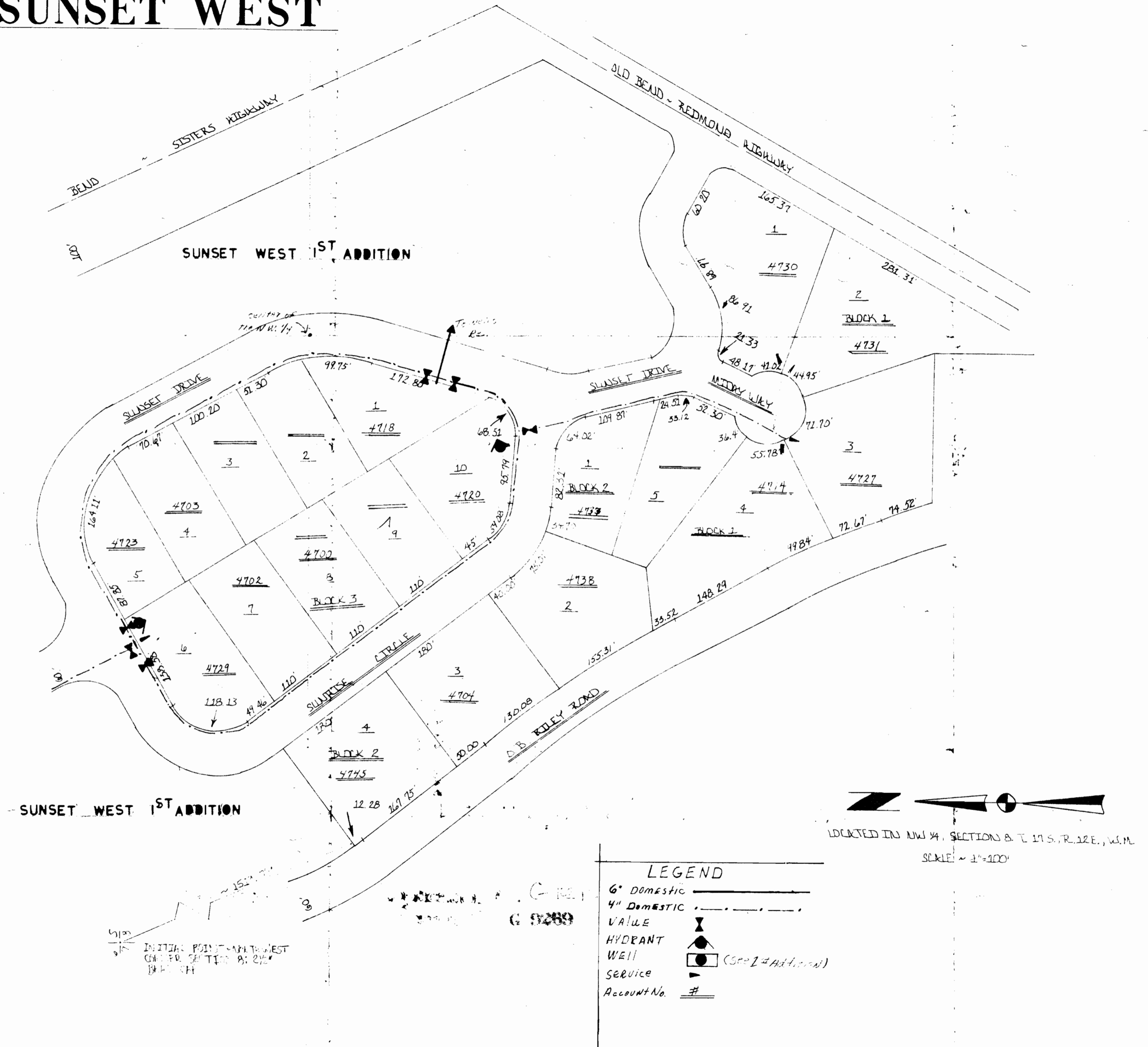
LOCATED IN SEC. 8, T. 17 S., R. 12 E., W. M.  
SCALE ~ 1" = 100'  
JULY 18, 1977

Partial No. 10242  
G-9269

LEGEND	
4"	---
2"	---
VALVE	⊗
SERVICE	-
ACCOUNT NO.	#



# SUNSET WEST



SUNSET WEST 1ST ADDITION

LOCATED IN NW 1/4, SECTION 8, T. 17 S., R. 12 E., W.M.  
SCALE = 1"=100'

LEGEND	
6" Domestic	—————
4" Domestic	- - - - -
VALVE	▼
HYDRANT	▲
WELL	● (See # Addition)
SERVICE	▶
Account No.	#

INITIAL POINT - NW CORNER WEST CORNER SECTION 8; 21/2' FROM CENTER

6 9289