

See Map 28 8 2W

T85, R2/W WM

RECEIVED

MAY 21 1981

WATER RESOURCES DEPT.
SALEM, OREGON

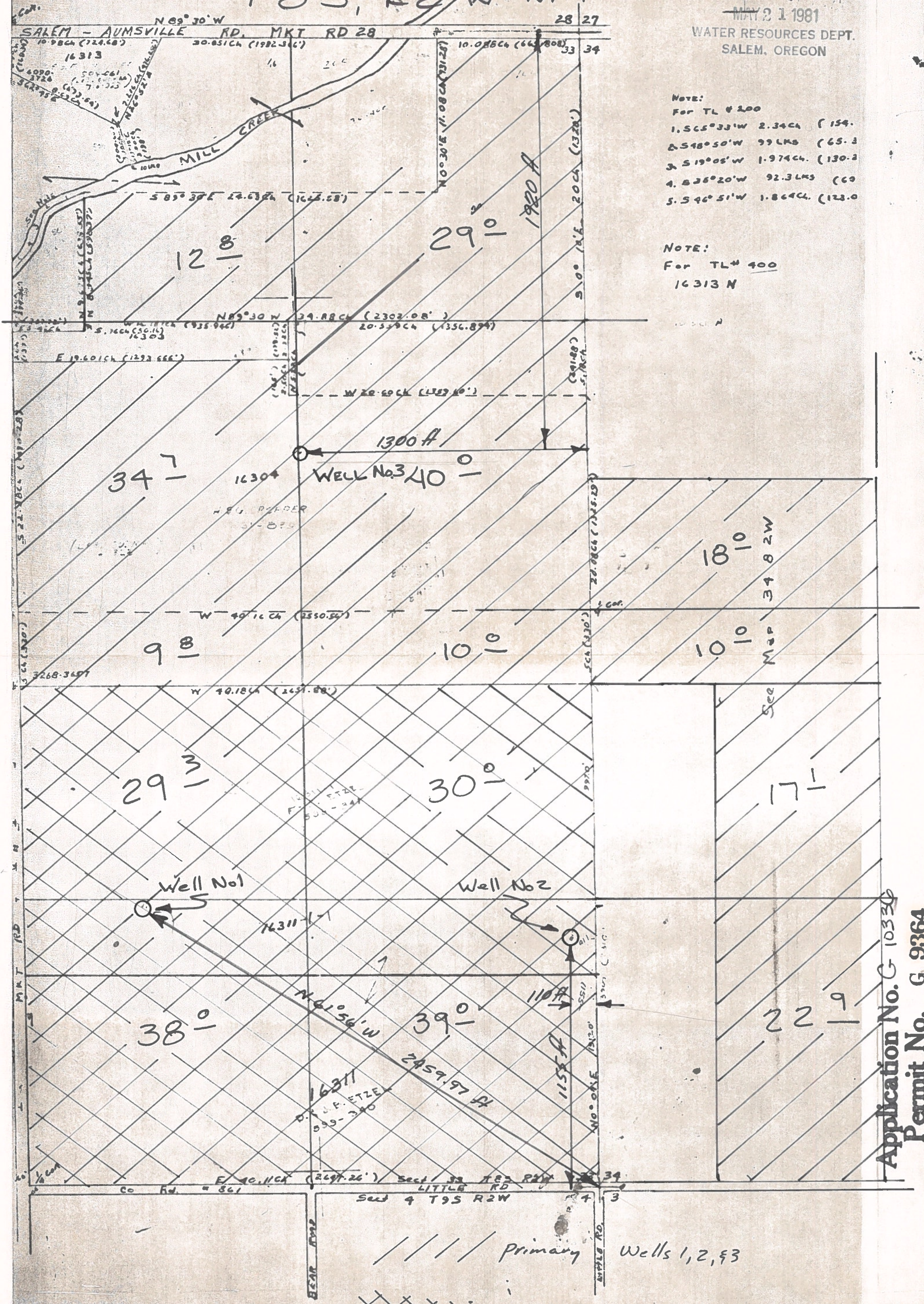
NOTE:

For TL # 200

- 1. S 65° 33' W 2.34 CA (154.0)
- 2. S 48° 50' W 99 LKS (65.3)
- 3. S 19° 05' W 1.97 CA (130.2)
- 4. S 26° 20' W 92.3 LKS (60)
- 5. S 46° 51' W 1.86 CA (128.0)

NOTE:

For TL # 400
16313 N



See Map 34 8 2W

Application No. G 10330
Permit No. G 9364

See Map 4 9 2W

SCALE 1" = 400'

33 8