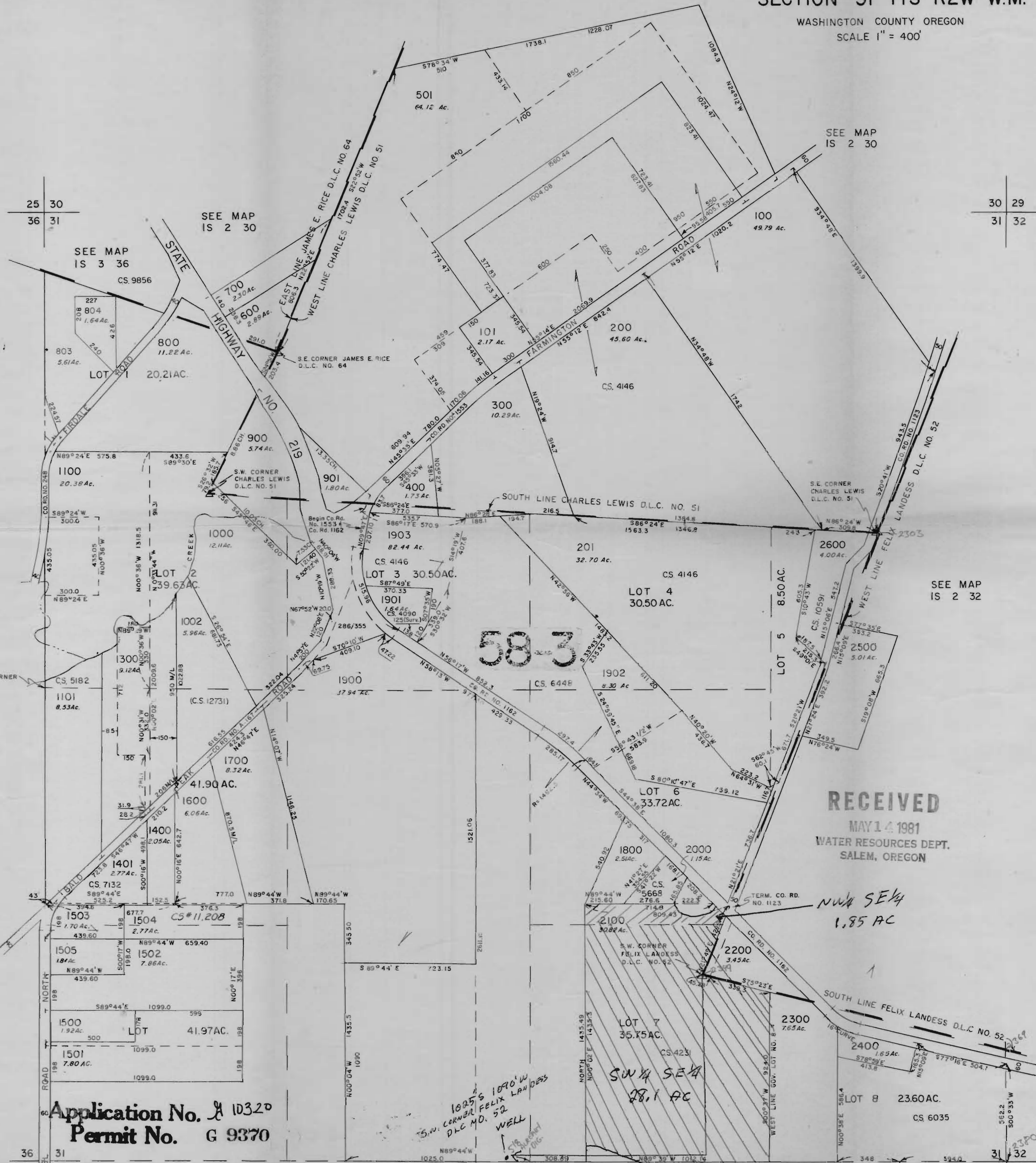


WASHINGTON COUNTY OREGON  
SCALE 1" = 400'

CANCELLED TAX LOTS  
801, 802, 806, 800, 802,  
503, 504, 1801, 1802,  
1001, 1003, 1200,



25 30  
36 31

30 29  
31 32

SEE MAP  
IS 3 36

SEE MAP  
IS 2 32

RECEIVED  
MAY 14 1981  
WATER RESOURCES DEPT.  
SALEM, OREGON

Application No. 10320  
Permit No. G 9370

SEE MAP  
2S 2 6

MAY 24 1981

12850-  
IS 2 31