

RIVER

SW 1/4 of SE 1/4  
40 ACRES

SE 1/4 of SE 1/4  
40 ACRES

SW 1/4 of SW 1/4  
40 ACRES

TUMALO - CLINE  
FALLS RD

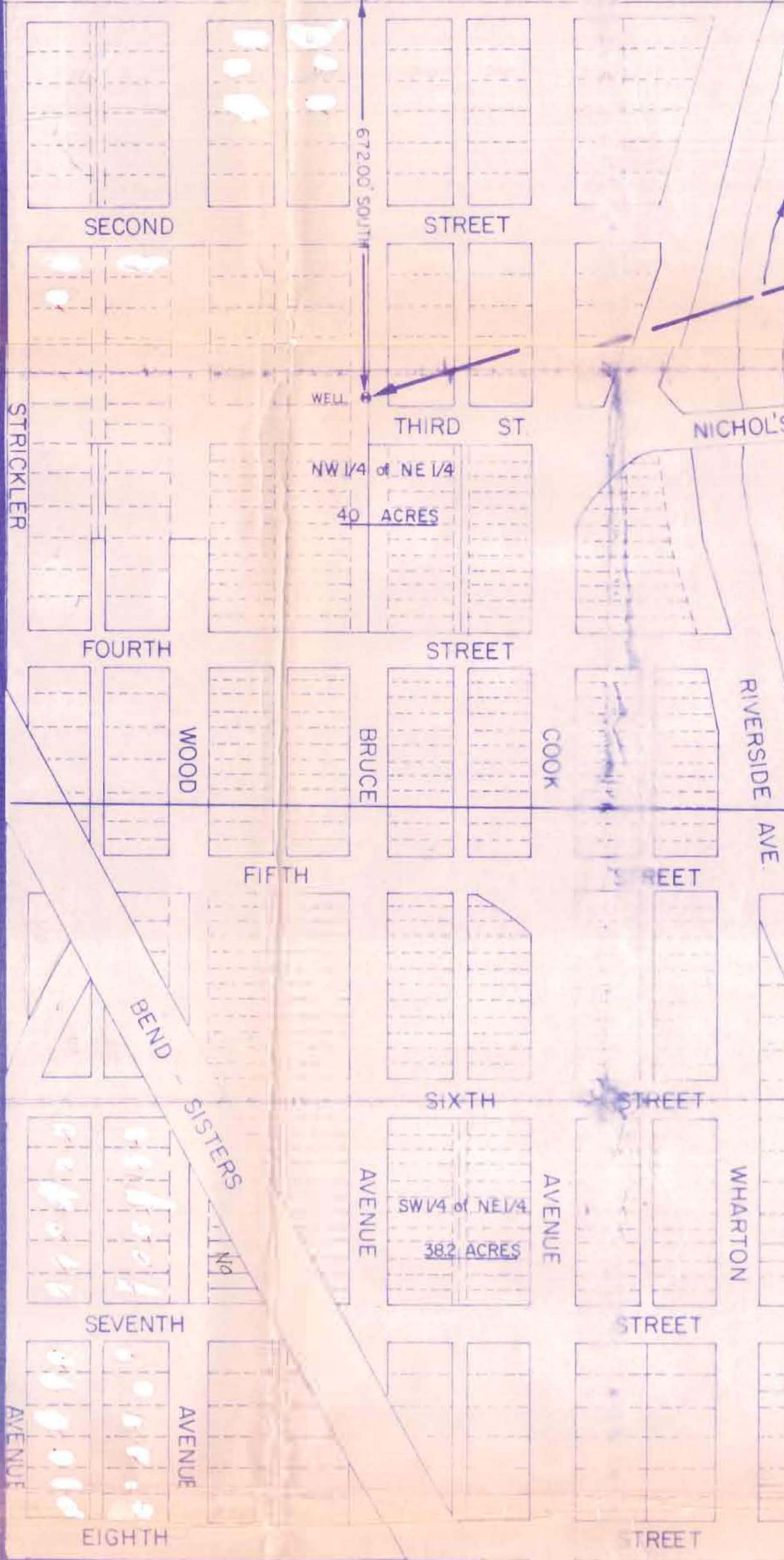
2089.00' WEST

SEC. 29  
32

(WELL IS LOCATED 672' SOUTH &  
2049' WEST FROM N.E. CORNER SEC 31)

WELL  
NW 1/4 of NE 1/4  
40 ACRES

NE 1/4 of NE 1/4  
40 ACRES



NICHOL'S SECONDARY RD

DESCHUTES

SE 1/4 of NE 1/4  
40 ACRES

SW 1/4 of NE 1/4  
38.2 ACRES

LEGEND -  
 WATER RIGHTS BOUNDARY

**RECEIVED**  
 MAY 6 1981  
 WATER RIGHTS DIVISION  
 SALEM, OREGON

SECTION 29, 30 & 31, TOWNSHIP 16 SOUTH, RANGE 11  
 Scale 1" = 200'  
 Date 5-5-81  
 Design JWM  
 Drawn JWM  
 Checked MSB

**WATER RIGHTS**  
**LAIDLAW WATER**  
**Boatwright Engine**