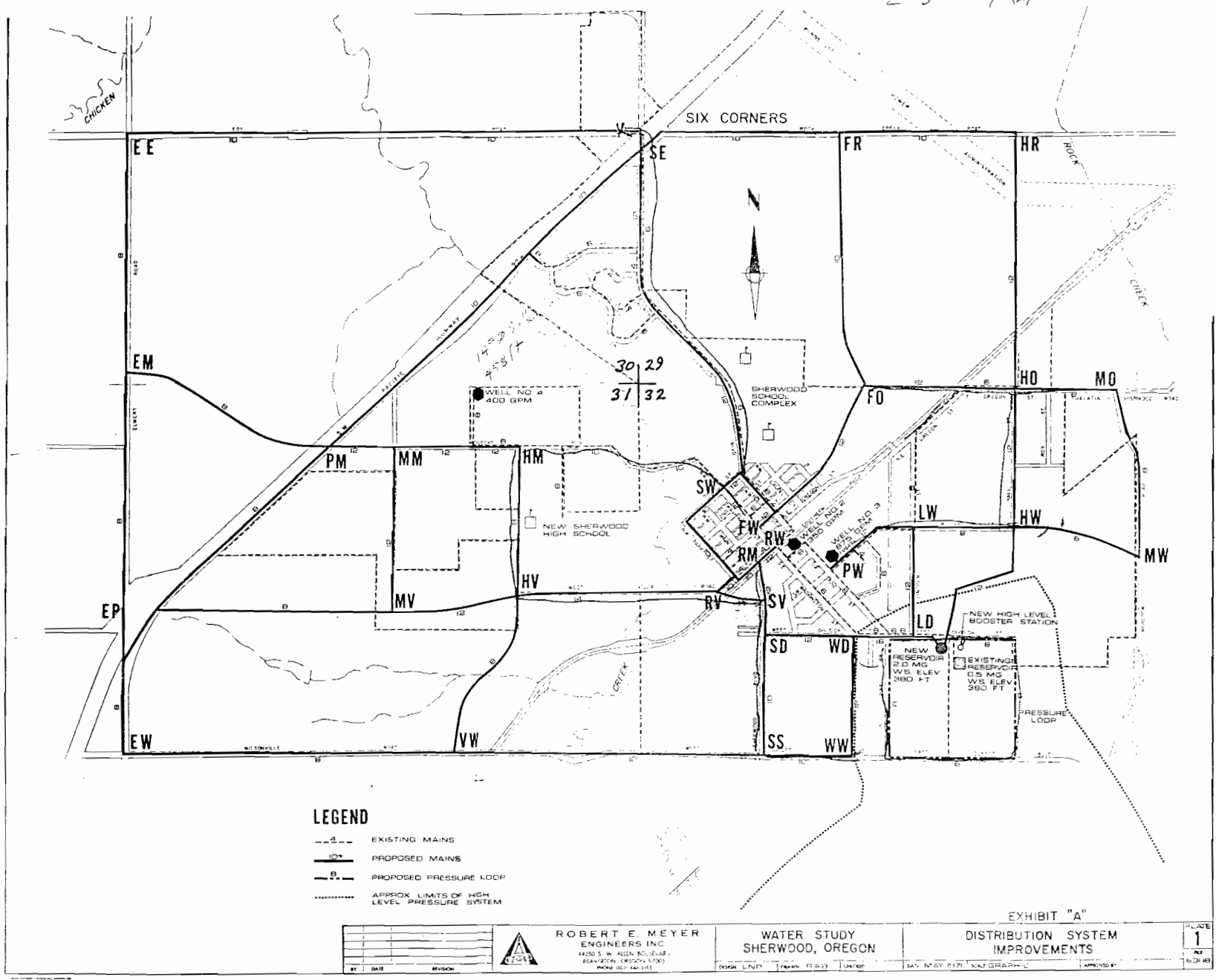


Application No. 29364
 Permit No.



LEGEND

- EXISTING MAINS
- PROPOSED MAINS
- PROPOSED PRESSURE LOOP
- APPROX. LIMITS OF HIGH LEVEL PRESSURE SYSTEM

| | | | | | | | | | |
|-----------|----|-----------------|----|--|---------------------------------|-------|-------------------------------------|----|--|
| BY: _____ | | REVISION: _____ | | <p>ROBERT E. MEYER ENGINEERS INC. 1400 S. W. ALLEN RD., SUITE 100 BEAVERTON, OREGON 97005 PHONE (503) 640-3111</p> | WATER STUDY SHERWOOD, OREGON | | DISTRIBUTION SYSTEM IMPROVEMENTS | | EXHIBIT "A" PLATE 1 SHEET 1 OF 1 |
| DATE | BY | DATE | BY | | DESIGN | CHECK | DATE | BY | |