

T. 1 S., R. 24 E., W. M.

2 1
11 12



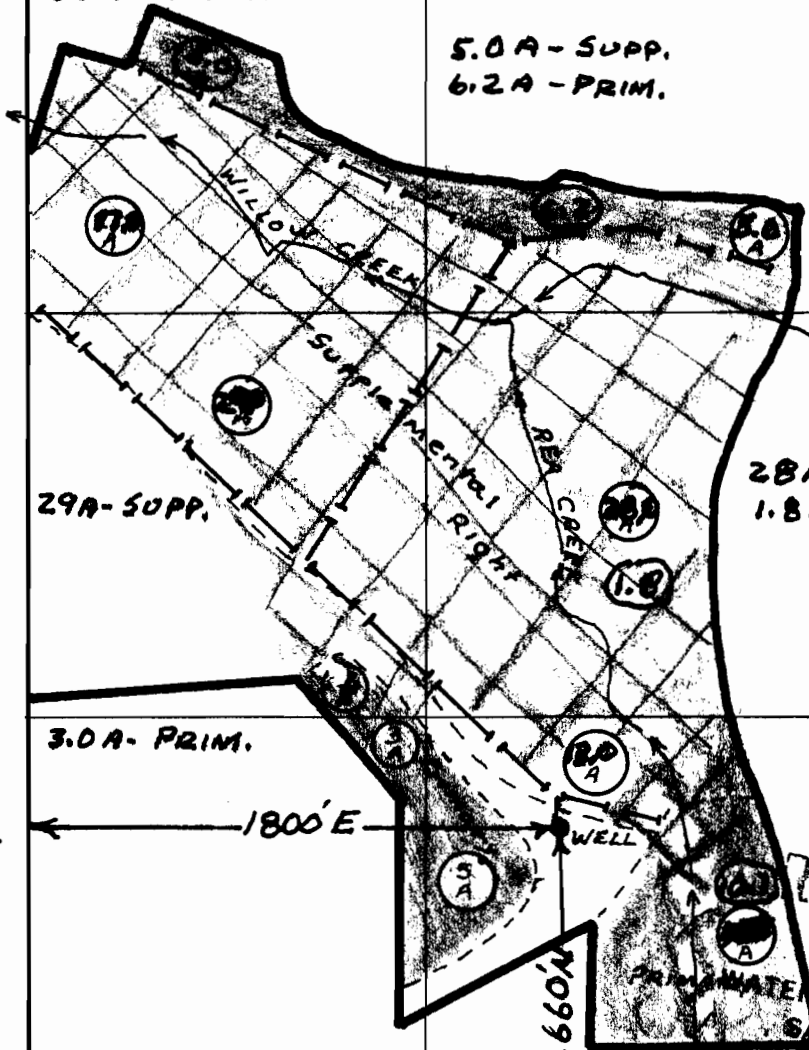
Application No. G-9842

Permit No.

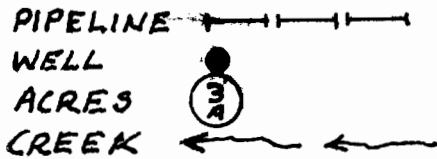
G 9502

17.0 A - SUPP.
5.0 A - PRIM.

5.0 A - SUPP.
6.2 A - PRIM.



28A - SUPP.
1.8A - PRIM



3.0 A - PRIM.

1800' E

660' N

13A - SUPP.
15.7 - PRIM.

11 12

RECEIVED
DEC 18 1981
DEPARTMENT OF
LAND RESOURCES
STATE OF OREGON