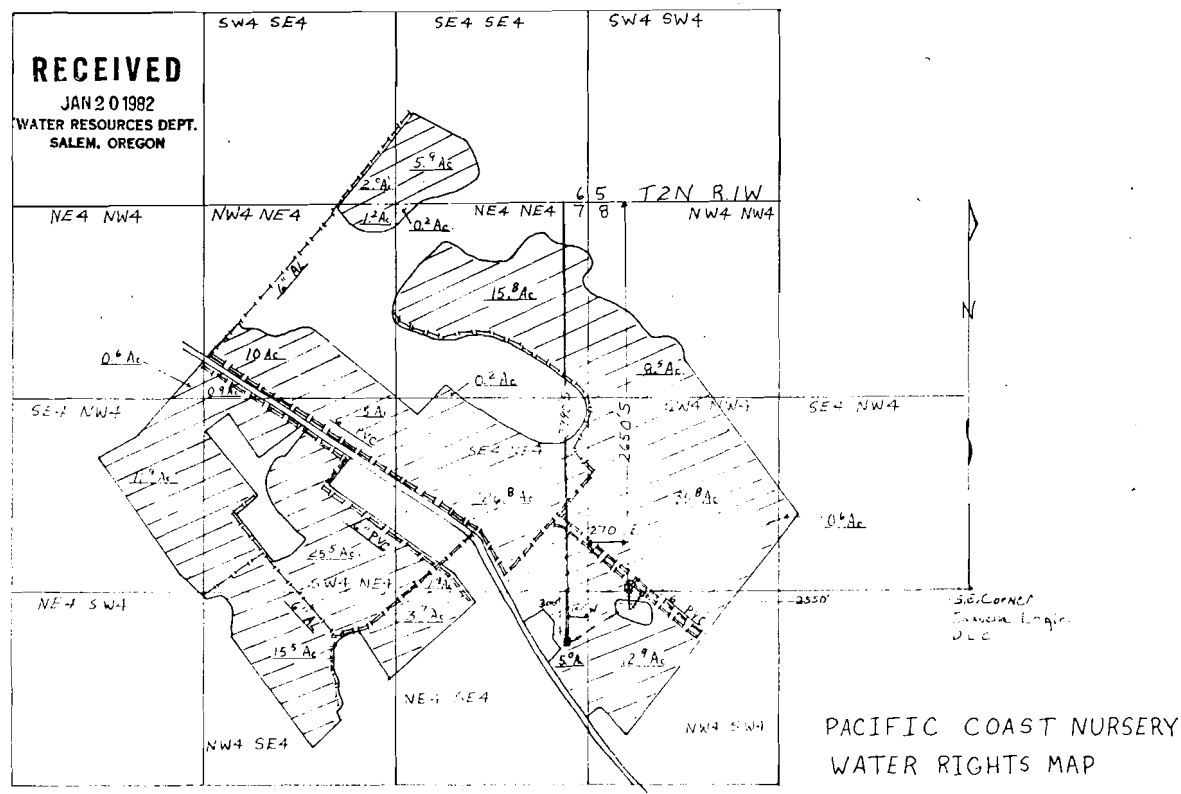


RECEIVED
 JAN 20 1982
 WATER RESOURCES DEPT.
 SALEM, OREGON



PACIFIC COAST NURSERY
 WATER RIGHTS MAP

12/81

- (solid) 4" Gal.
- ▨ Buried mainline
- ▤ Portable mainline
- ▥ 6" PVC
- ▧ 6" Gal.
- ☐ Pump for distribution

scale: 1"=660'

Application No. G-9741
 Permit No. G 9537

U.S. DEPARTMENT OF AGRICULTURE SOIL CONSERVATION SERVICE	
DESIGNED BY	APPROVED BY <i>(Marked in Yellow)</i> DAN M. DODD District Engineer Property
CHECKED BY	SHEET OF
DATE	

Form SCS-311A (March 1969)