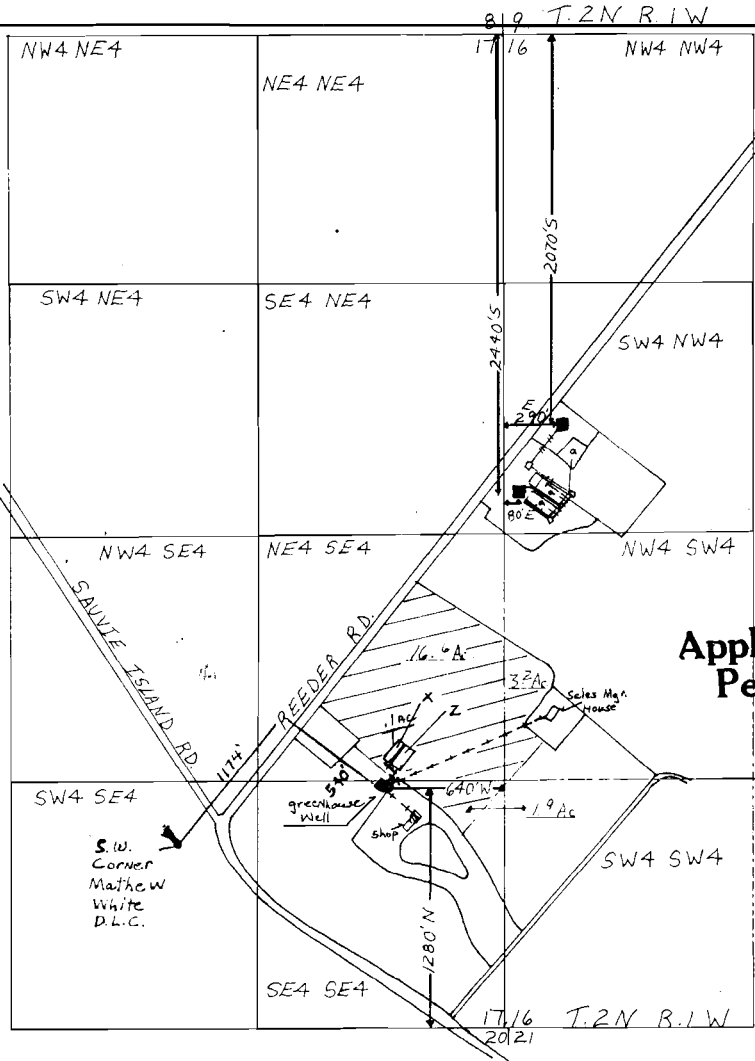


**RECEIVED**

JAN 20 1982  
WATER RESOURCES DEPT.  
SALEM, OREGON



Application No. G-9745  
Permit No. G 9541

PACIFIC COAST NURSERY  
WATER RIGHTS MAP

12/81

scale : 1" = 660'

- + 2" PVC buried
- ++ 2" gal. buried
- x 3750 ft. (shadehouse) containerized stock location
- z greenhouse 11250 ft.<sup>2</sup>
- 3/4" Cast iron
- a humidified warehouses
- well

U. S. DEPARTMENT OF AGRICULTURE SOIL CONSERVATION SERVICE	
DESIGNED BY	APPROVED BY
CHECKED BY	DRAWING NO. <i>(marked in yellow)</i> Greenhouse Well
DATE:	SHEET <i>(marked in yellow)</i> OF <i>(marked in yellow)</i> AND Auxiliary Warehouse Pump