

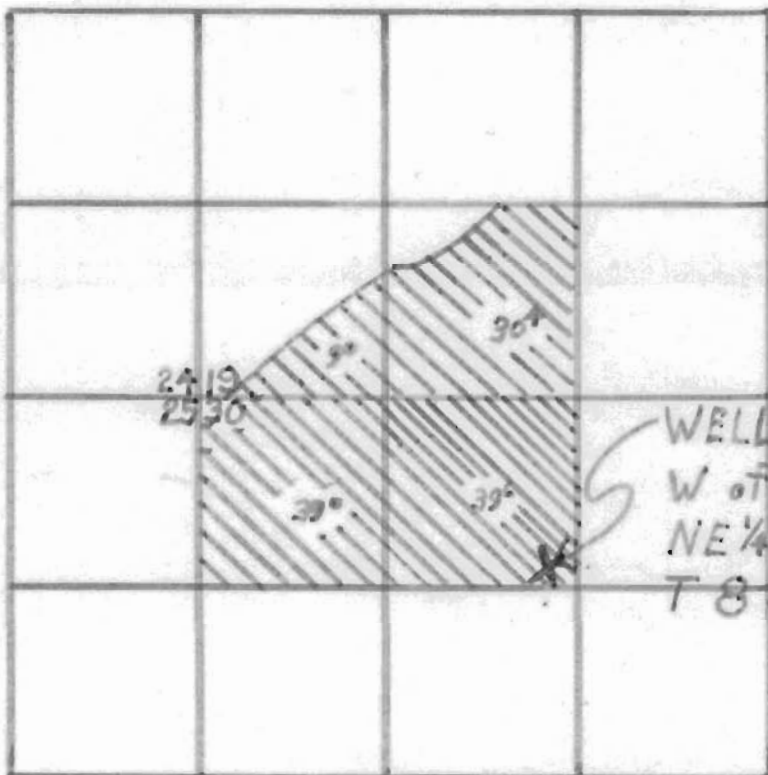
T. 8 S. R. 15 & 16 E. W.M.

N
↑

RECEIVED

MAR 18 1982

WATER RESOURCES DEPT
SALEM, OREGON



WELL 112'4" N, 193'
W of SE corner of
NE 1/4 NW 1/4, Sec. 30,
T 8 S, R 16 E W.M.

Application No. G-10022

Permit No. G 9591

MARY FOLMSBEE

Scale: 4" = 1 mile