

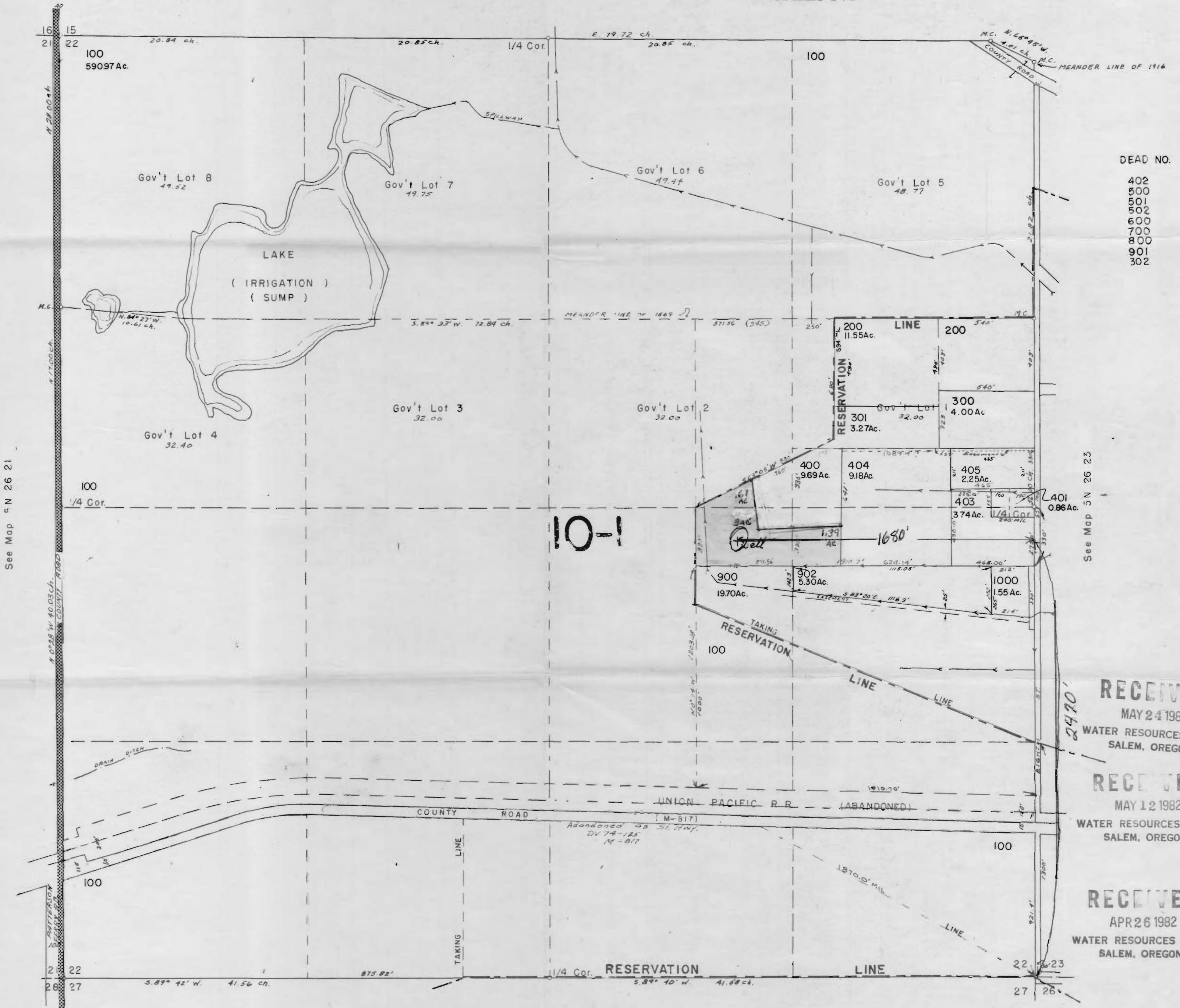
MORROW COUNTY  
Section 22 T.5N. R.26E. W.M.

5N 26 22

1"=400'

See Map 5N 26 15

Application No. G-10695  
Permit No. G 9680



DEAD NO.

- 402
- 500
- 501
- 502
- 600
- 700
- 800
- 901
- 302

See Map 5N 26 21

See Map 5N 26 23

**RECEIVED**  
MAY 24 1982  
WATER RESOURCES DEPT  
SALEM, OREGON

**RECEIVED**  
MAY 12 1982  
WATER RESOURCES DEPT  
SALEM, OREGON

**RECEIVED**  
APR 26 1982  
WATER RESOURCES DEPT  
SALEM, OREGON

See Map 5N 26 27

5N 26 22