

**STATE OF OREGON WATER RESOURCE DEPARTMENT**

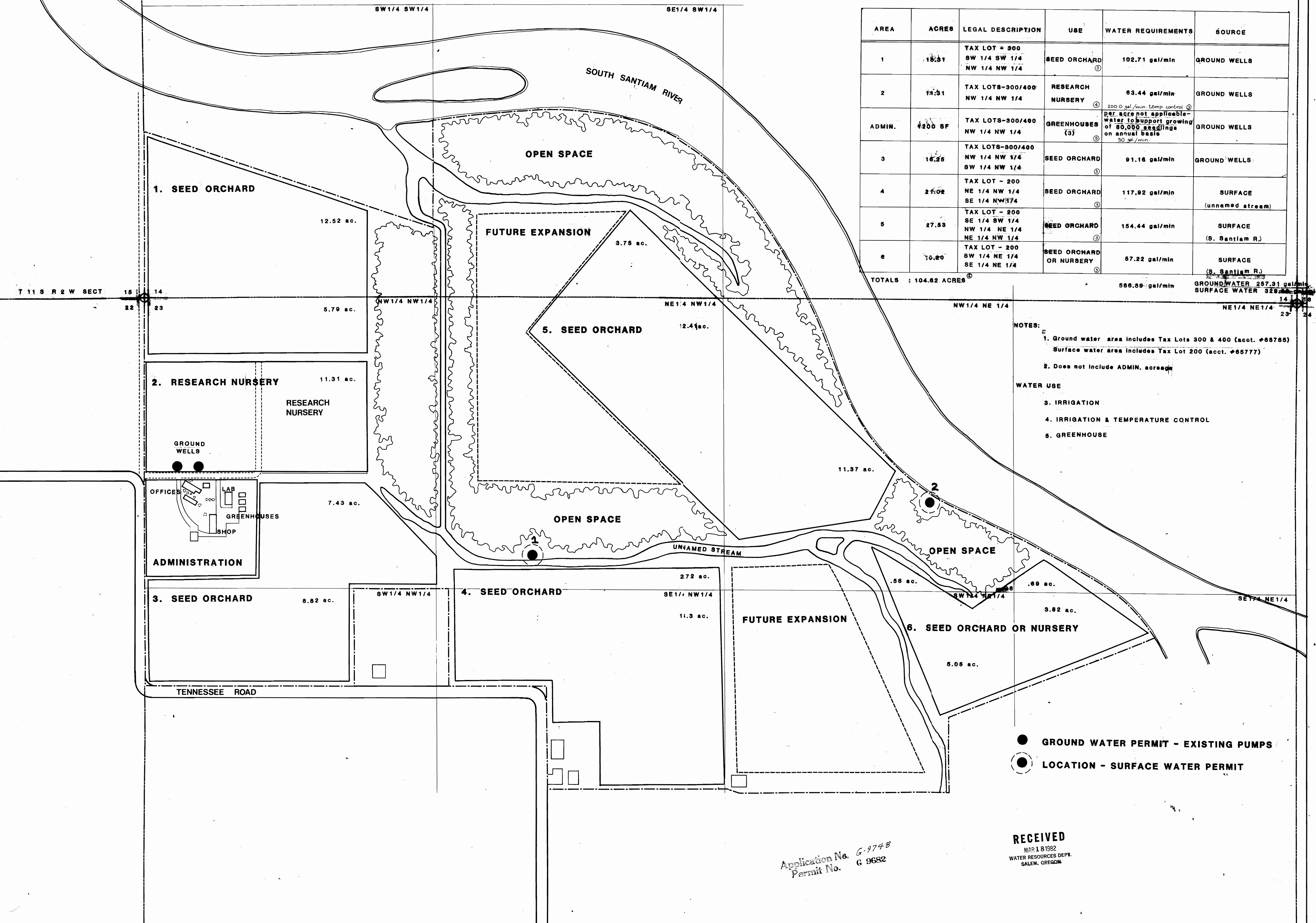
APPLICATION FOR A PERMIT TO APPROPRIATE GROUND WATER  45.87 ACRES

APPLICATION FOR A PERMIT TO APPROPRIATE SURFACE WATER  68.71 ACRES

**LAND UTILIZATION PLAN**

**1982 - 1986**

**WATER ALLOCATION PROGRAM**



AREA	ACRES	LEGAL DESCRIPTION	USE	WATER REQUIREMENTS	SOURCE
1	18.31	TAX LOT - 300 SW 1/4 SW 1/4 NW 1/4 NW 1/4	SEED ORCHARD (2)	102.71 gal/min	GROUND WELLS
2	11.31	TAX LOTS-300/400 NW 1/4 NW 1/4	RESEARCH NURSERY (4)	63.44 gal/min <small>200.0 gal/min temp control (4)</small>	GROUND WELLS
ADMIN.	4200 SF	TAX LOTS-300/400 NW 1/4 NW 1/4	GREENHOUSES (3)	<small>Per acre not applicable - water to support growing of 80,000 seedlings on annual basis 50 gal/min</small>	GROUND WELLS
3	18.25	TAX LOTS-300/400 NW 1/4 NW 1/4 SW 1/4 NW 1/4	SEED ORCHARD (3)	91.16 gal/min	GROUND WELLS
4	21.02	TAX LOT - 200 NE 1/4 NW 1/4 SE 1/4 NW 1/4	SEED ORCHARD (3)	117.92 gal/min	SURFACE (unnamed stream)
5	27.53	TAX LOT - 200 SE 1/4 SW 1/4 NW 1/4 NE 1/4 NE 1/4 NW 1/4	SEED ORCHARD (3)	154.44 gal/min	SURFACE (S. Santiam R.)
6	10.20	TAX LOT - 200 SW 1/4 NE 1/4 SE 1/4 NE 1/4	SEED ORCHARD OR NURSERY (3)	57.22 gal/min	SURFACE (S. Santiam R.)
<b>TOTALS</b>				<b>586.89 gal/min</b>	<b>GROUND WATER 257.91 gal/min SURFACE WATER 328.98 gal/min</b>

**NOTES:**

1. Ground water area includes Tax Lots 300 & 400 (acct. #65785)  
Surface water area includes Tax Lot 200 (acct. #65777)
2. Does not include ADMIN. acreage

**WATER USE**

3. IRRIGATION
4. IRRIGATION & TEMPERATURE CONTROL
5. GREENHOUSE

Application No. G-9748  
Permit No. G 9682

**RECEIVED**  
MAY 18 1982  
WATER RESOURCES DEPT.  
SALEM, OREGON

