

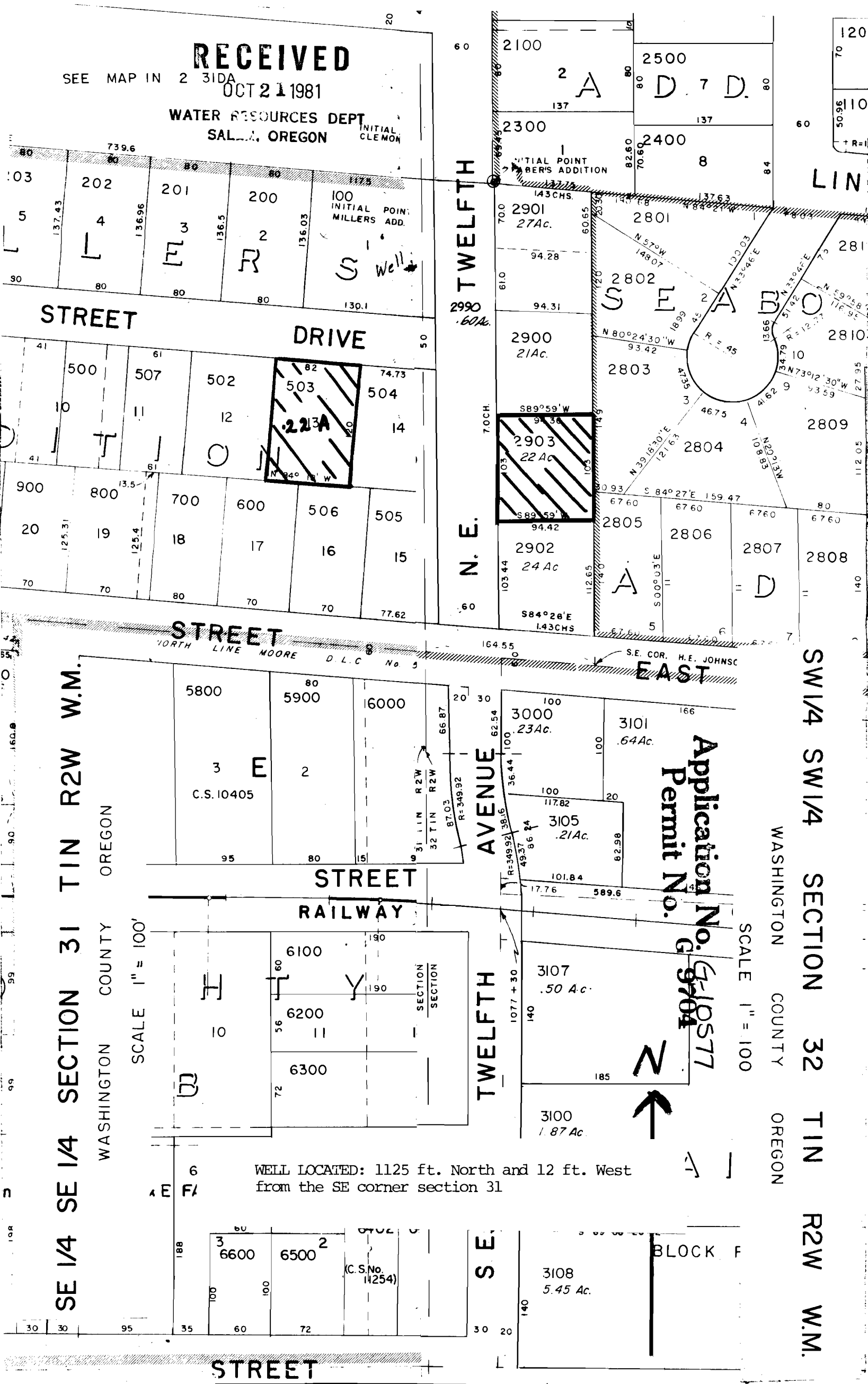
**RECEIVED**

SEE MAP IN 231DA

OCT 21 1981

WATER RESOURCES DEPT  
SALMON, OREGON

INITIAL  
CLEMON



TWELFTH

2990  
.60Ac.

N. E.

AVENUE

TWELFTH

S. E.

Application No. G-10577  
Permit No. G-9704



SCALE 1" = 100'

WELL LOCATED: 1125 ft. North and 12 ft. West from the SE corner section 31

SW 1/4 SW 1/4 SECTION 32 T1N R2W W.M.

SE 1/4 SE 1/4 SECTION 31 T1N R2W W.M.

WASHINGTON COUNTY OREGON

WASHINGTON COUNTY OREGON

SCALE 1" = 100'

STREET

STREET

RAILWAY

EAST

BLOCK F

STREET

100 INITIAL POINT MILLERS ADD.

INITIAL POINT MILLERS ADDITION

Application No. G-10577  
Permit No. G-9704

5800 5900 6000

3 E 2

C.S. 10405

95 80 15

STREET

RAILWAY

SECTION SECTION

6100 6200 6300

10 56 72

SECTION SECTION

6 6

EA FA

188 100 100

3 6600 6500 2

(C.S.No. 11254)

30 30 95 35 60 72

STREET

30 20

STREET

STREET

STREET

2903  
22 Ac.

2902  
24 Ac.

2900  
21 Ac.

2901  
27 Ac.

2801

2802

2803

2804

2805

2806

2807

2808

2809

2810

2811

2812

2813

2814

2815

2816

2817

2818

2819

2820

2821

2822

2500  
D. 7 D.

2400  
8

2300

2200

2100

2000

1900

1800

1700

1600

1500

1400

1300

1200

1100

1000

900

800

700

600

500

400

300

200

100

0