

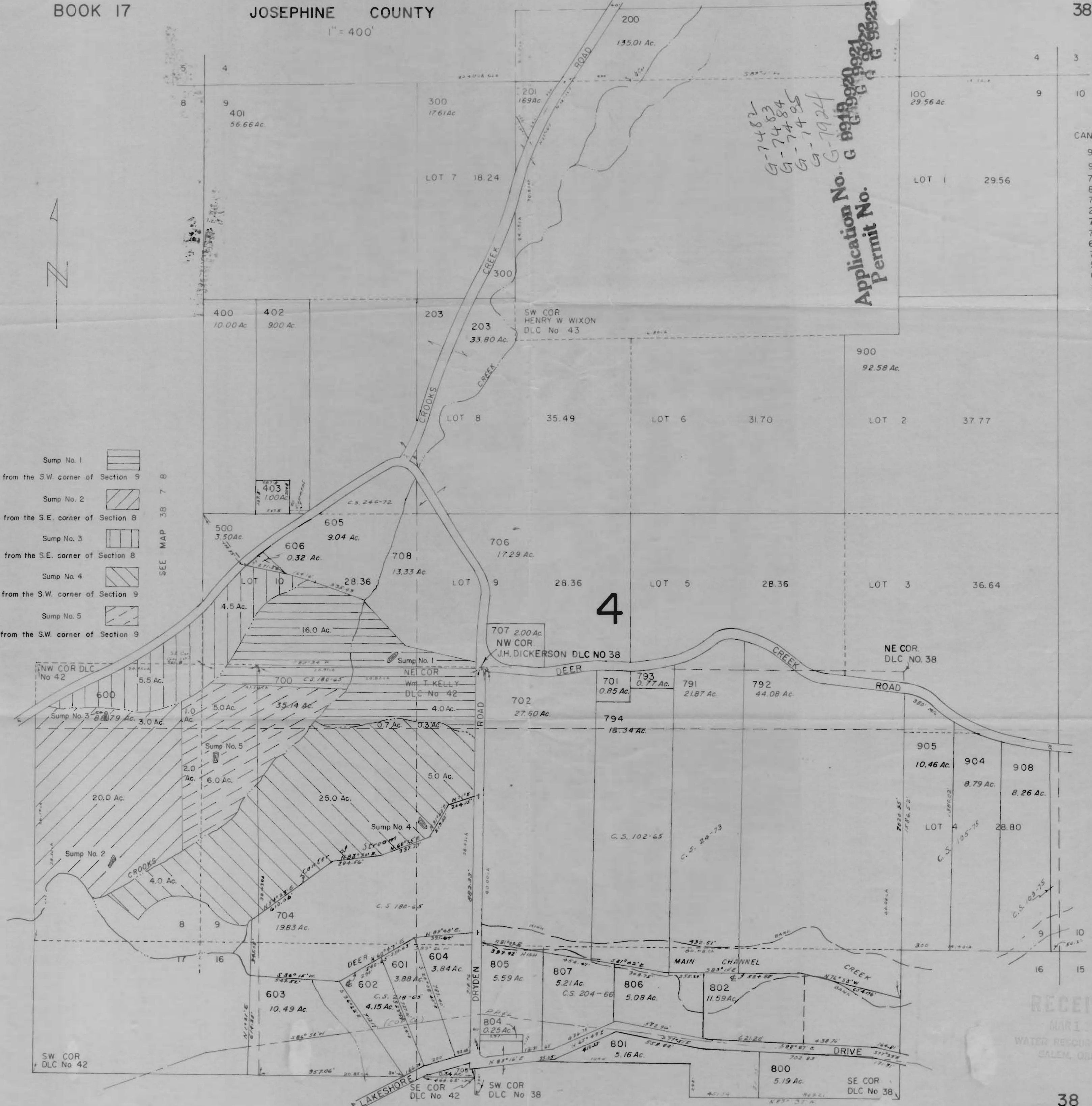
1" = 400'



- Sump No. 1 1760' N. & 1170' E. from the S.W. corner of Section 9
- Sump No. 2 500' N. & 540' W. from the S.E. corner of Section 8
- Sump No. 3 1390' N. & 590' W. from the S.E. corner of Section 8
- Sump No. 4 700' N. & 1370' E. from the S.W. corner of Section 9
- Sump No. 5 1130' N. & 80' E. from the S.W. corner of Section 9

SEE MAP 38 7 8

SEE MAP 38 7 10



G-7482
 G-7483
 G-7484
 G-7495
 G-7494
 G-74924

Application No. G 6919920
 Permit No. G 69223

CANCELLED T.L.
 901
 903
 793
 803
 703
 202
 794
 790
 690
 795
 902
 692
 906
 902

RECEIVED
 MAR 1 1977
 WATER RESOURCES DEPT
 SALEM, OREGON