

1" = 400'



- Sump No. 1 1760' N. & 1170' E. from the S.W. corner of Section 9
- Sump No. 2 500' N. & 540' W. from the S.E. corner of Section 8
- Sump No. 3 1390' N. & 590' W. from the S.E. corner of Section 8
- Sump No. 4 700' N. & 1370' E. from the S.W. corner of Section 9
- Sump No. 5 1130' N. & 80' E. from the S.W. corner of Section 9

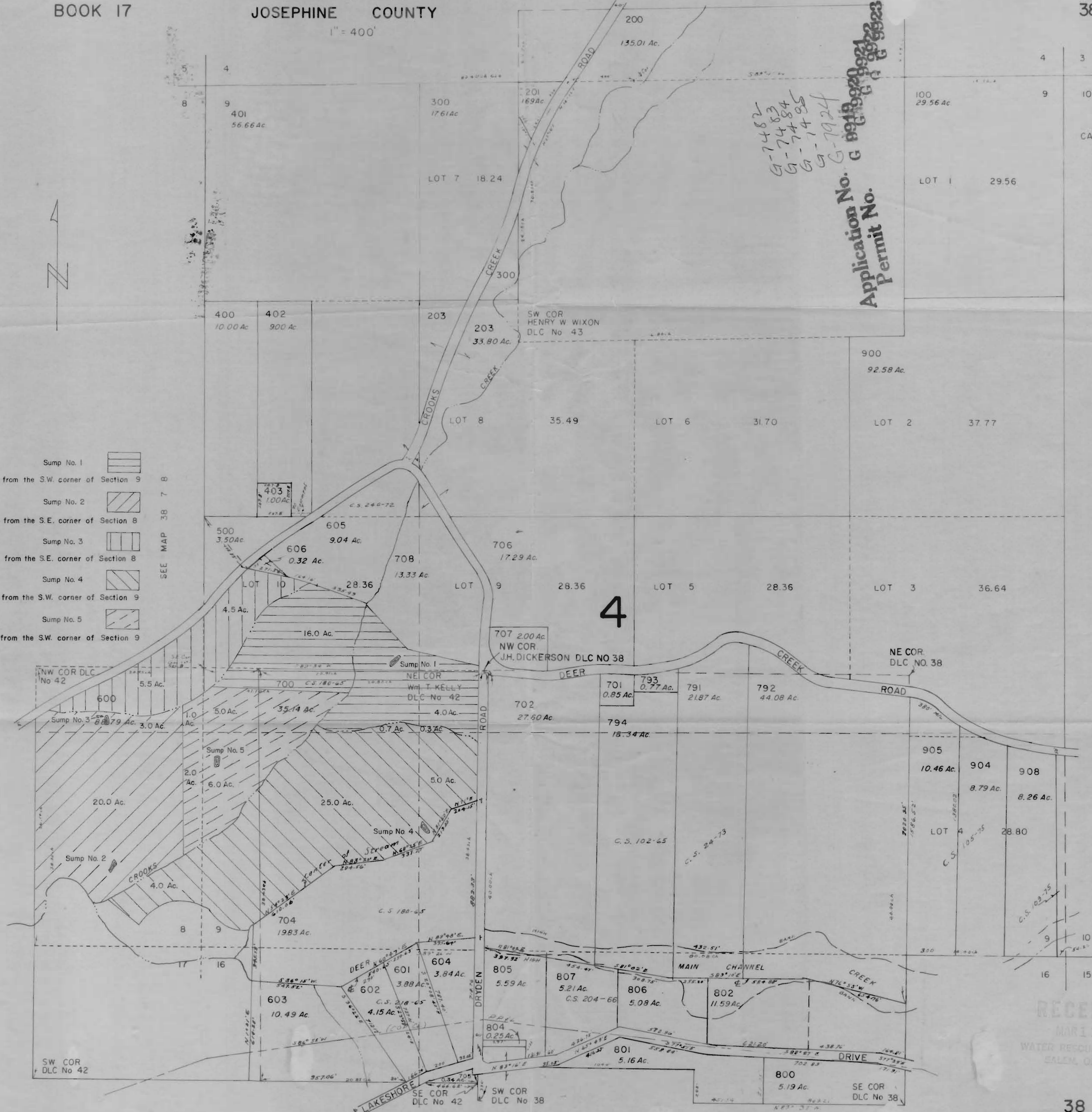
SEE MAP 38 7 8

SEE MAP 38 7 10

Application No. G 69189920
Permit No. G 6922623

G-7482
G-7484
G-7495
G-7494
G-7492

CANCELLED T.L.
901
903
793
803
703
202
794
790
690
795
902
692
906
902



RECEIVED
MAR 1 1977
WATER RESOURCES DEPT
SALEM, OREGON