




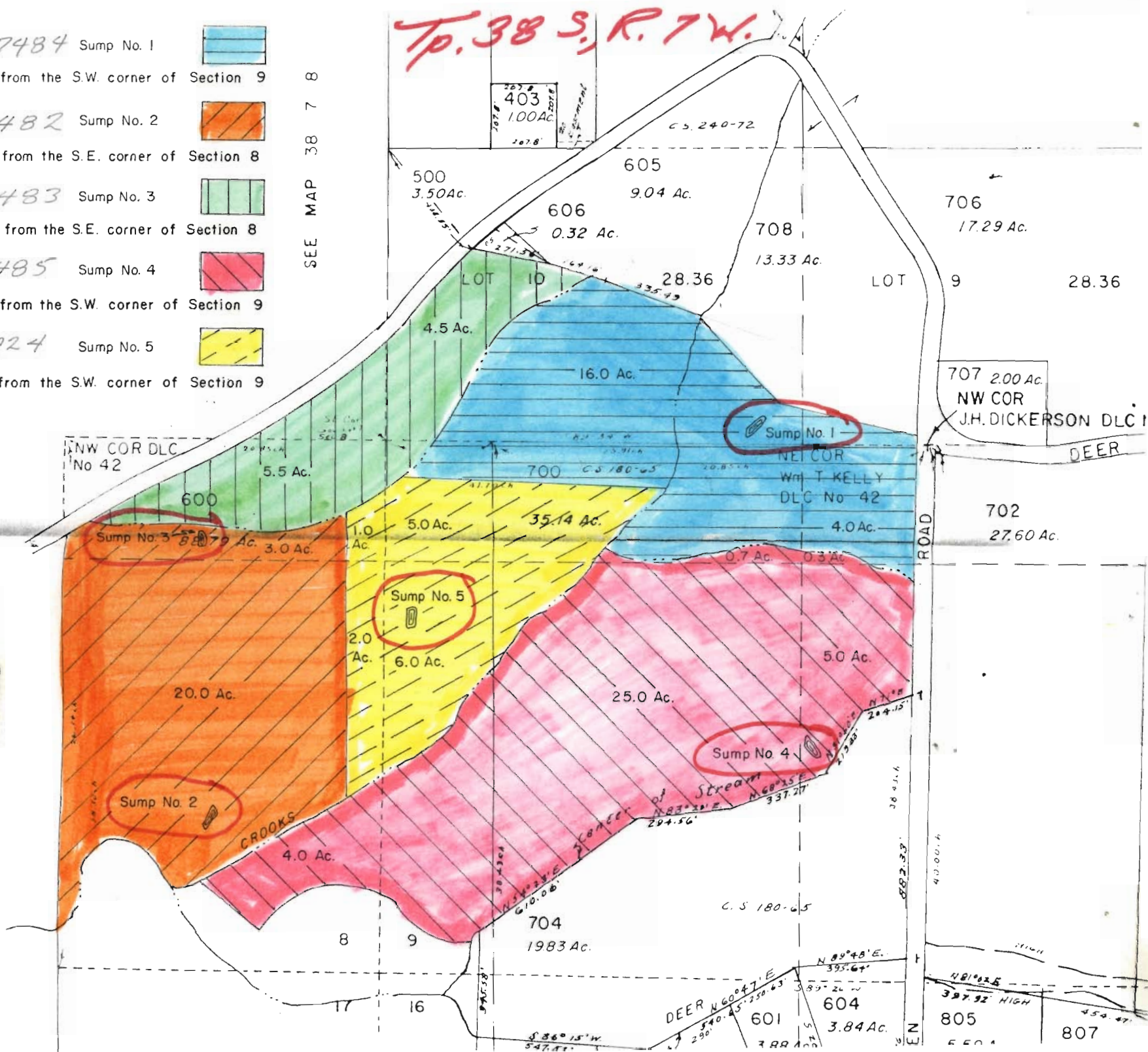


Application No. G-7482-3-4-S
 Permit No. G-7924
 G 9919 G 9920 G 9921 G 9922
 G 9923

- G-7484 Sump No. 1 
- 1760' N & 1170' E. from the S.W. corner of Section 9
- G-7482 Sump No. 2 
- 500' N & 540' W. from the S.E. corner of Section 8
- G-7483 Sump No. 3 
- 1390' N. & 590' W. from the S.E. corner of Section 8
- G-7485 Sump No. 4 
- 700' N. & 1370' E. from the S.W. corner of Section 9
- G-7924 Sump No. 5 
- 1130' N. & 1170' E. from the S.W. corner of Section 9

SEE MAP 38 7 8

Top. 38 S., R. 7 W.



200

135.01 Ac.

Final Proof
by Inspection

38-7-8
6-9

WM. DIST. 14
GRANTS PASS, ORE.

JAN 07 1983

RECEIVED

6-7482
6-7483
6-7484
6-7485
6-7486
6-7487

Application No. G 8919
Permit No. G 8921

196
29.56 Ac.

LOT 1 29.56

4 3
9 10

CANCELLED T.L.

- 901
- 903
- 793
- 803
- 703
- 202
- 794
- 790
- 690
- 795
- 902
- 692
- 906
- 902

900
92.58 Ac.

LOT 6 31.70

LOT 2 37.77

LOT 5 28.36

LOT 3 36.64

793
0.77 Ac.

791
21.87 Ac.

792
44.08 Ac.

NE COR
DLC NO. 38

ROAD

380

905
10.46 Ac.

904
8.79 Ac.

908
8.26 Ac.

LOT 4 28.80

5.702-63

6-3-24-73

2020.31
586.52

380.72

SEE MAP 38 7 10

SECTION 9 T.38 S. R.7W. W. M.
JOSEPHINE COUNTY

1:400

Permit: G 9923
Volume: 8A
Strm: SUMP 5
Trib: DEER CR
Priority: 3/10/77

5
4
8
9
401
56.66 Ac

300
17.61 Ac

LOT 18 24

400
10.00 Ac

402
9.00 Ac

203

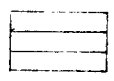
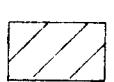
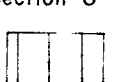
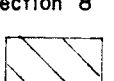
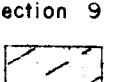
203
33.80 Ac

HENRY W. WIXON
DLC No 43

35.49

CROOKS CREEK

LOT 8

- 1  er of Section 9
- 2  er of Section 8
- 3  er of Section 8
- 4  er of Section 9
- 5  er of Section 9

SEE MAP

403
10.00 Ac

500
3.50 Ac

605
9.04 Ac

606
0.32 Ac

708
13.33 Ac

706

4.5 Ac

28 36

LOT 9

28.36

16.0 Ac

707 20.0 Ac
NW COR
J.H. DICKERSON - DLC NO 39

Sump No. 1

NE1 COR
Wm T. KELLY
DLC No 42

DEER

5.5 Ac

600

700

4.0 Ac

3.0 Ac

Sump No. 5

2.0 Ac

6.0 Ac

0.7 Ac

0.82 Ac

20.0 Ac

5.0 Ac

35.14 Ac

5.0 Ac

25.0 Ac

Sump No. 4

CROOKS

4.0 Ac

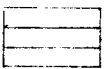

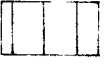
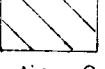
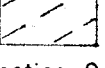
Stream
Moose
337.27

4

5
8
9
401
56.66 Ac



400 402
10.00 Ac 9.00 Ac

- Sump No. 1 
1760' N. & 1170' E. from the S.W. corner of Section 9
- Sump No. 2 
500' N. & 540' W. from the S.E. corner of Section 8
- Sump No. 3 
1390' N. & 590' W. from the S.E. corner of Section 8
- Sump No. 4 
700' N. & 1370' E. from the S.W. corner of Section 9
- Sump No. 5 
1130' N. & 80' E. from the S.W. corner of Section 9

SEE MAP FOR

NW COR DLC
No 42

600
5.5 Ac.
Sump No. 3
3.0 Ac.

20.0 Ac.
Sump No. 2

4.0 Ac.
CROOKS

1.0 Ac.
5.0 Ac.
Sump No. 5
2.0 Ac.
6.0 Ac.

35.14 Ac.
25.0 Ac.
Sump No. 4

403
100 Ac

500
3.50 Ac.
4.5 Ac.

605
606
0.32 Ac

16.0 Ac.

904 Ac.

708
13.33 Ac.

28.36
Sump No. 1
NET CO
DLC N

0.7 Ac. 0.32

Stream
337.20

CROOKS

ST. 14
ASS. ORB
7 1983
IVED

Applicati
Permit

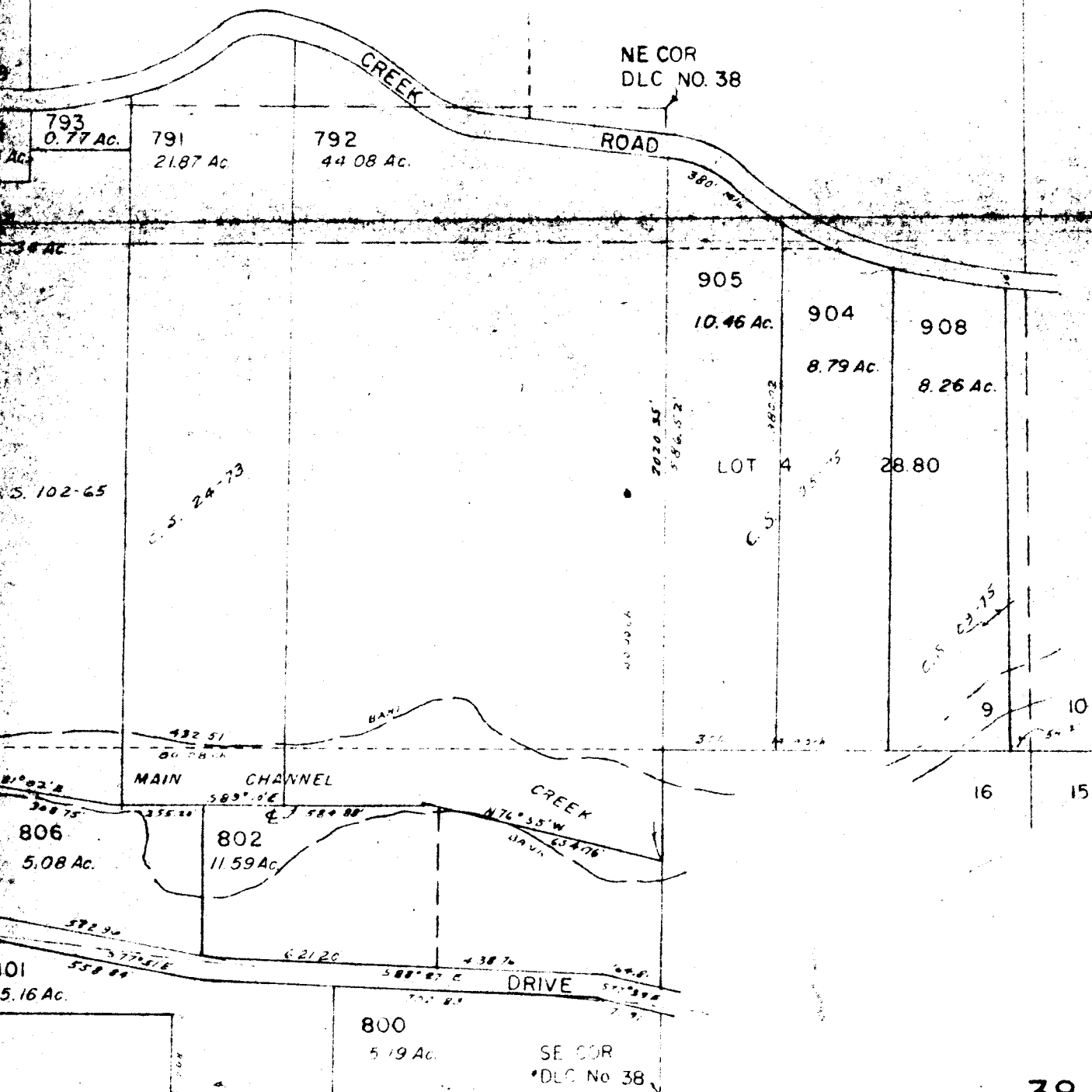
790
690
795
902
692
906
902


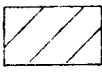

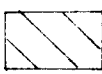
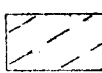
900
92.58 Ac.

LOT 6 31.70 LOT 2 37.77

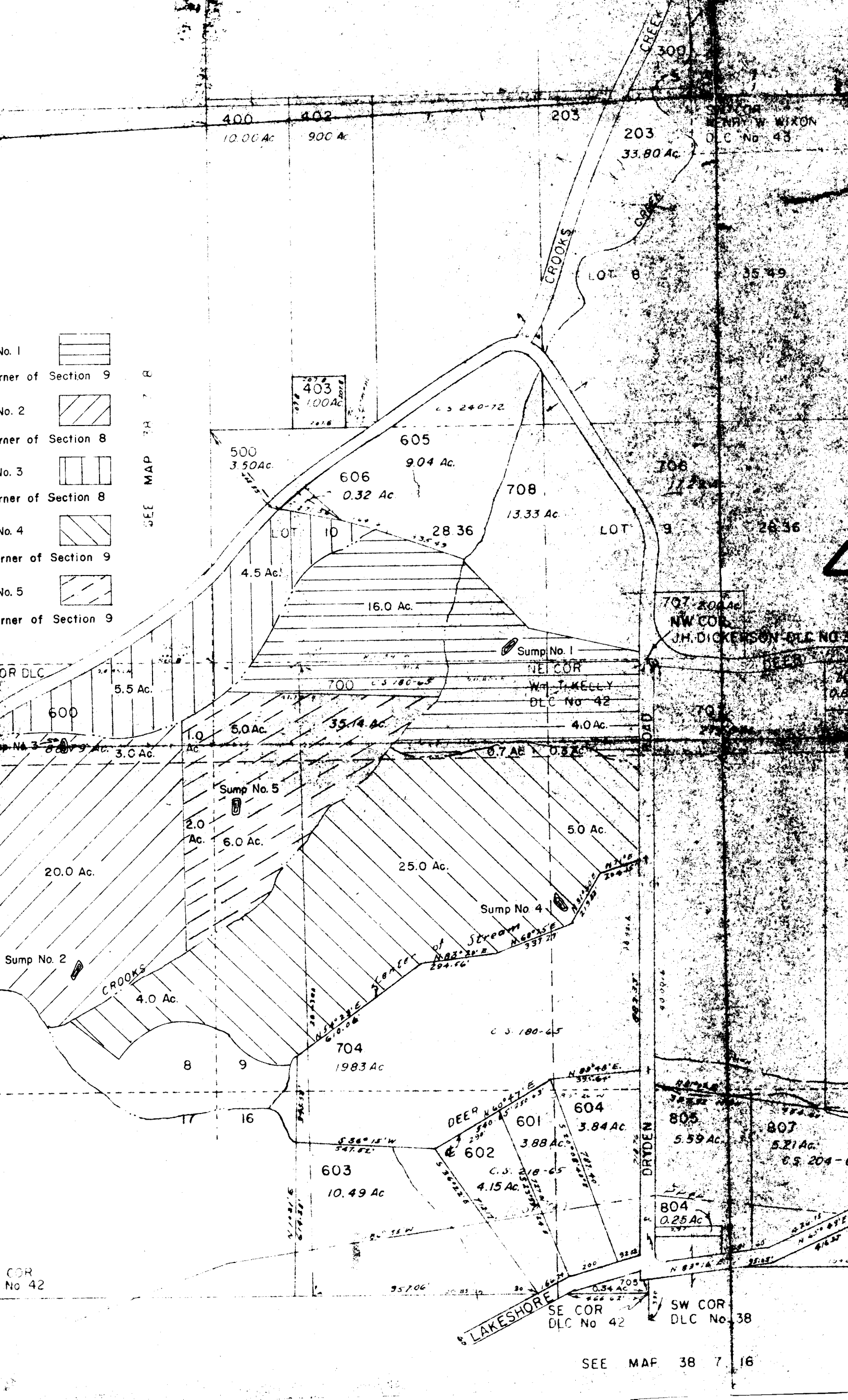
LOT 5 28.36 LOT 3 36.64

SEE MAP 38 7 10




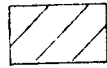
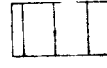

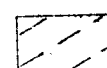
- No. 1  Corner of Section 9
- No. 2  Corner of Section 8
- No. 3  Corner of Section 8
- No. 4  Corner of Section 9
- No. 5  Corner of Section 9

SEE MAP 38 7 16

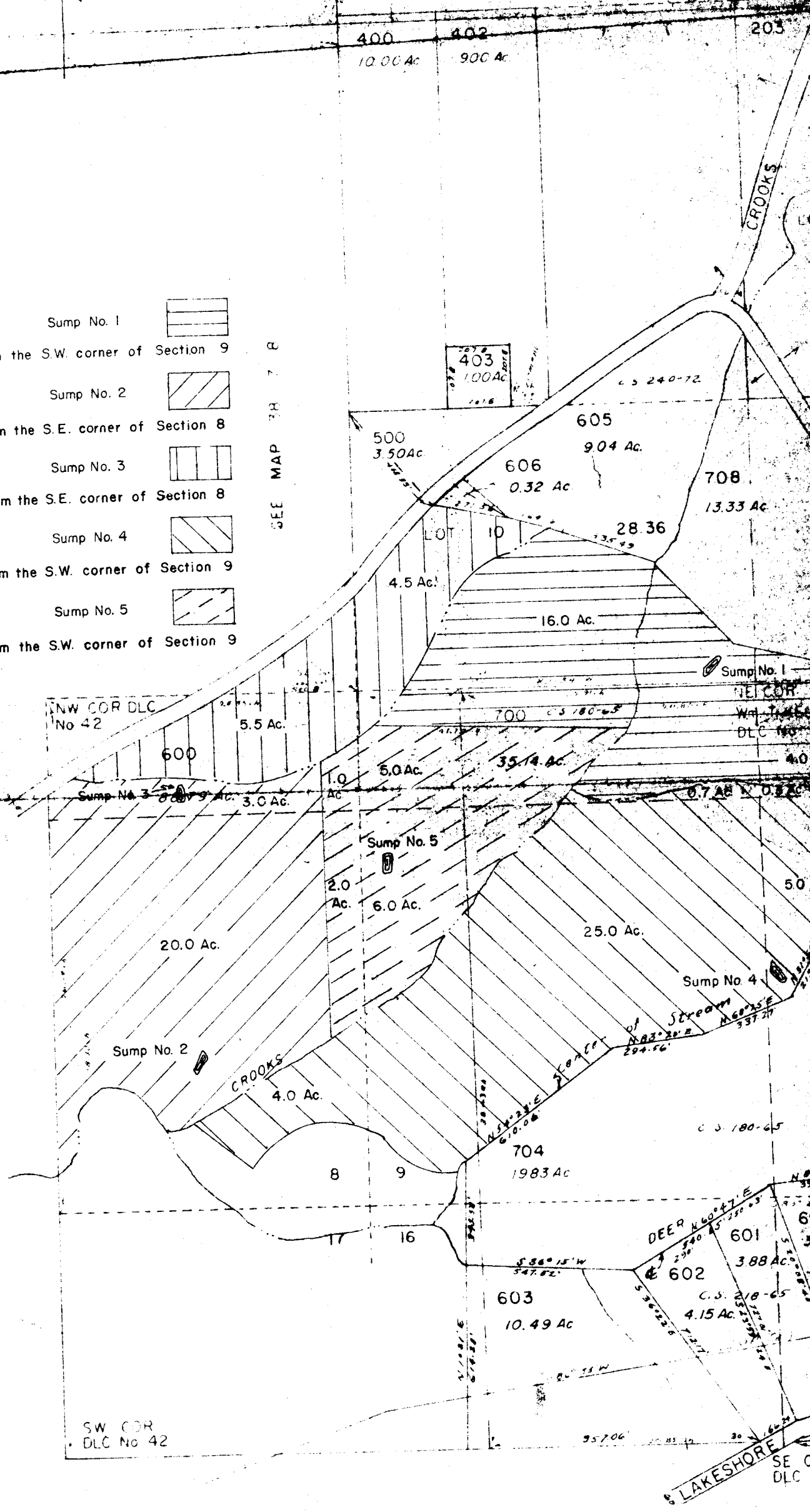




400 402 203
10.00 Ac 900 Ac

- Sump No. 1  1760' N. & 1170' E. from the S.W. corner of Section 9
- Sump No. 2  500' N. & 540' W. from the S.E. corner of Section 8
- Sump No. 3  1390' N. & 590' W. from the S.E. corner of Section 8
- Sump No. 4  700' N. & 1370' E. from the S.W. corner of Section 9
- Sump No. 5  1130' N. & 80' E. from the S.W. corner of Section 9

SEE MAP 78 7 8



SW COR
DLC No 42

LAKESHORE
SE C
DLC