

RECEIVED

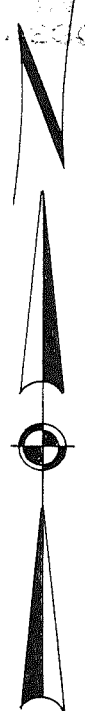
SEP 13 1982

WATER RESOURCES DEPT.  
SALEM, OREGON

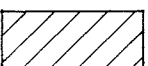
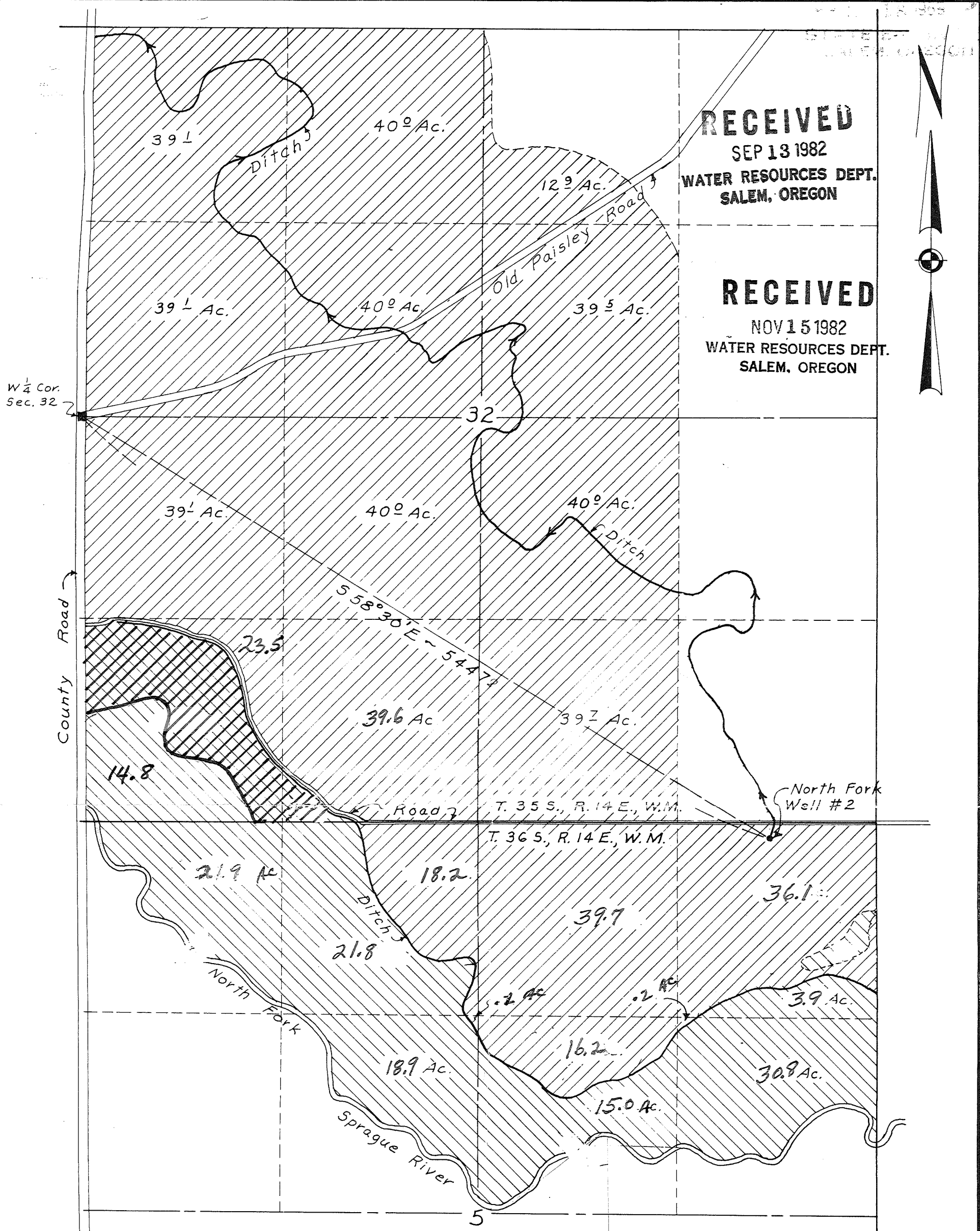
RECEIVED

NOV 15 1982

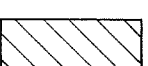
WATER RESOURCES DEPT.  
SALEM, OREGON



W 1/4 Cor.  
Sec. 32



Primary Irrigation from Well



Supplemental Irrigation from Well  
Supplemental to Surface Rights  
from Sprague River

Application No. G-10811  
Permit No. G 9930

MAP SHOWING LANDS TO BE IRRIGATED  
FROM  
NORTH FORK WELL #2  
BY  
BITTER BRUSH LAND & CATTLE CO.

3/4, OREGON  
IN  
SEC. 32, T. 35 S., R. 14 E., W.M., & SEC. 5, T. 36 S., R. 14 E., W.M.  
KLAMATH COUNTY, OREGON  
Scale: 1" = 660'  
Survey & Map by: WILLIAM L. WALES  
Consulting Engineer  
Klamath Falls, Oregon  
February, 1969



1/2" = 100'